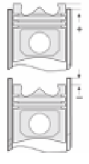
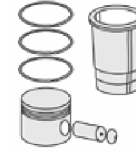
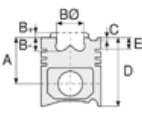




DAIHATSU - Ø 76

87-70440-STDA



Motor Özellikleri
(Engine Specifications)

İmalatçı (Manufacturer):
DAIHATSU
Çap (Diameter): 76
FM Grup No: 2301

CB 41
3 Sil. Benzinli 993cc
33 KW (45 PS)
OHC
HI JET VAN, PICK UP(885)
1993 - 1996

Piston Ölçüleri
(Piston Dimensions)

A : 28.500
B- : 1.300
BØ : 50.500
C1 : 1.160
C2 : 1.550
D : 60.600
E : 5.000

Pim: 18 x 59,8



Piston Özellikleri
(Piston Features)

Biyel Koluna Sıkı Geçme
(Tight Fit On Connecting
Rod)
Gözarası Düz
(Flat Eye Gap)

Piston Parça No
(Piston Part No)

87-962800-12
87-70440-STDA

87-962805-02
87-70440 025A

87-962807-02
87-70440 050A

Segman Seti
(Ring Set)

06-962800-30-STD
06-962805-30 0,25 mm
06-962807-30 0,50 mm

1.500 CRP IKA
1.500 P STD
2.800 CRP STD

Silindir Gömleği
(Liner)

Silindir Kit
(Assembly Set)

Piston - Blok Montaj
Yüksekliği
(Piston - Block
Assembly Height)

