

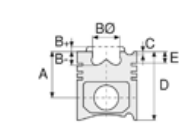


**Motor Özellikleri**  
(Engine Specifications)

İmalatçı (Manufacturer):  
IVECO TRK  
Çap (Diameter): 85  
FM Grup No: 4128

**614.000**  
2 Sil. Dizel 1135cc 13  
Kw(18 PS) 21.5:1  
Angledozer 18, La Piccola  
18

**615.000**  
4 Sil. Dizel 2270cc  
29.5 Kw(40 PS) 21.5:1  
441R, 451 C, JC412R, R411,  
R411J  
1965 - 1968



**Piston Ölçüleri**  
(Piston Dimensions)

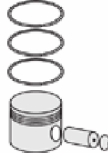
A : 50.300  
B- : 4.500  
D : 90.000  
E : 7.500

Pim: 28 x 69



**Piston Özellikleri**  
(Piston Features)

Gözarası Düz  
(Flat Eye Gap)



**Piston Parça No**  
(Piston Part No)

87-200000-02  
87-70749-STD

87-200006-02  
87-70749 040

87-200008-02  
87-70749 060



**Segman Seti**  
(Ring Set)

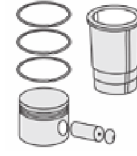
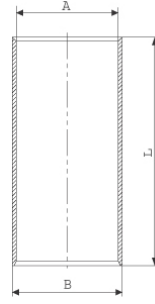
06-200000-10-STD  
06-200006-10 0,40 mm  
06-200008-10 0,60 mm

3.000 CRP IKA  
3.000 P STD  
3.000 P STD  
5.500 CRP STD

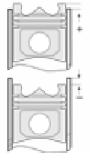


**Silindir Gömleği**  
(Liner)

14-011240-00-D  
B : 90.000  
L : 178.000



**Silindir Kit**  
(Assembly Set)



**Piston - Blok Montaj**  
**Yüksekliği**  
(Piston - Block  
Assembly Height)





**Motor Özellikleri**  
(Engine Specifications)

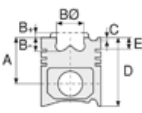
İmalatçı (Manufacturer):  
IVECO TRK - TOYOTA  
Çap (Diameter): Ø 95  
FM Grup No: 4104

**802.000**  
2 Sil. Dizel 1560cc  
18,5 Kw (25 PS)

**803.000 (8030.01)**  
3 Sil. Dizel 2339cc  
28/33/37 Kw  
(38/45/51 PS) 17:1  
570 TURBO, 612 NE,  
616 N2  
1966 - 1971

**804.000 (8040.01)**  
4 Sil. Dizel 3119cc  
40/51,5 Kw (54/70 PS) 17:1  
616 N2, 616 N4, 625 N1,  
625 N2, ORSETTO  
15L, 15N  
1968 - 1971

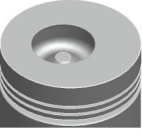
**806.000**  
(**8060.01/11**)  
6 Sil. Dizel 4678cc 81  
Kw (110 PS) 17:1  
UTB İle Ortak Motor  
(Common Engine With  
UTB)  
416 A TRAKTOR, 645 N1,  
645 N2, 650 N1, 650 N2,  
655 N, 662 N1, 662 N2,  
672 N2  
1960 - 1971



**Piston Ölçüleri**  
(Piston Dimensions)

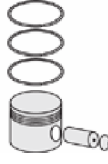
A : 59.650  
B- : 23.500  
BØ : 42.500  
BX : 5.000  
D : 101.150  
E : 19.600

Pim: 32 x 84



**Piston Özellikleri**  
(Piston Features)

Gözarası Düz  
(Flat Eye Gap)



**Piston Parça No**  
(Piston Part No)

87-207200-02  
87-70754-STD  
87-207206-02  
87-70754 040  
87-207208-02  
87-70754 060

87-207211-02  
87-70754 100



**Segman Seti**  
(Ring Set)

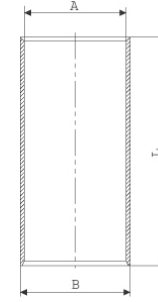
06-207200-10-STD  
06-207206-10 0,40 mm  
06-207208-10 0,60 mm  
06-207211-10 1,00 mm

2.500 CRP KV1  
2.500 P IKA  
5.500 CRP STD



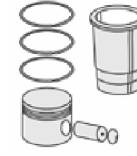
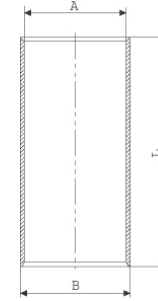
**Silindir Gömleği**  
(Liner)

14-010620-00-D  
B : 99.000  
L : 187.000

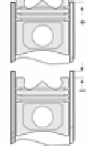


14-019870-00-D

B : 103.000  
L : 187.000



**Silindir Kit**  
(Assembly Set)



**Piston - Blok Montaj**  
Yüksekliği  
(Piston - Block  
Assembly Height)

+ 0,46 / + 0,79





IVECO TRK - Ø 100

87-70620-STD



**Motor Özellikleri**  
(Engine Specifications)

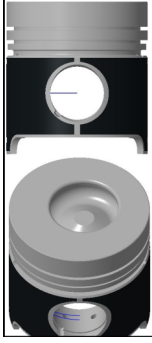
İmalatçı (Manufacturer):  
IVECO TRK  
Çap (Diameter): Ø 100  
FM Grup No: 4137

**8035.06.200**  
3 Sil. Dizel 2708cc  
33-41kw/45-56PS 17.0  
TRAKTOR 54 C,  
Traktör 55, Traktör 56  
1985...

**Piston Ölçüleri**  
(Piston Dimensions)

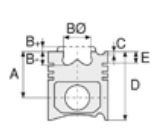
A : 65.300  
B- : 19.850  
B : 48.200  
BX : 3.500  
BY : 3.000  
D : 108.750  
E : 17.800

Pim: 38 x 85



**Piston Özellikleri**  
(Piston Features)

Soğutma Kanallı  
(Coolin Gallery)  
Yağ Püskürtme Oyuğu  
(Oil Jet Cut-out)  
Gözarası düz  
(Flat Eye Gap)



**Piston Parça No**  
(Piston Part No)

87-836300-42  
87-70620-STD



**Segman Seti**  
(Ring Set)

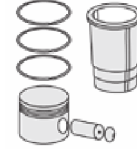
06-836300-30 STD  
06-836306-30 0,40 mm  
06-836308-30 0,60 mm  
2.500 CRP KV1  
2.500 P IKA  
4.000 CRP STD



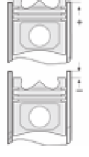
**Silindir Gömleği**  
(Liner)

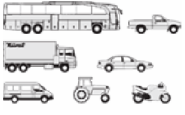


**Silindir Kit**  
(Assembly Set)



**Piston - Blok Montaj**  
Yüksekliği  
(Piston - Block  
Assembly Height)





**Motor Özellikleri**  
(Engine Specifications)

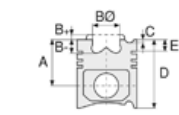
İmalatçı (Manufacturer):  
IVECO TRK  
Çap (Diameter): 100  
FM Grup No: 4105

**8025.02**  
2 Sil. Dizel 1728cc 24 Kw  
(32 PS) 17:1  
TRAKTOR 300, TRAKTOR  
350, TRAKTOR 355  
1973....

**8030.02, 8035.02**  
3 Sil. Dizel 2592cc 37/45  
Kw (50/62 PS) 17:1  
616 N3, TRAKTOR 500,  
TRAKTOR 540  
1973....

**8040.02, 8045.02**  
4 Sil. Dizel 3456cc  
44/47/56 Kw (60/64/76  
PS) 17:1  
40 NC, 50 NC, 50 NCS,  
55 NC 329, 55 NL 329,  
600, 616 N3, 616 N4, 640,  
C 8070  
1973....

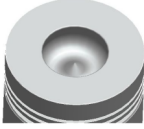
**8060.02, 8065.02**  
6 Sil. Dizel 5187cc 74/88  
Kw (100/120 PS) 17:1  
110 NC, 110 NR, 80 NC,  
80 NR, 80 NT, 90 NC,  
90 P, 90 PC, TRAKTOR  
1000  
1973....



**Piston Ölçüleri**  
(Piston Dimensions)

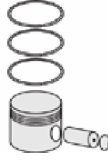
A : 59.650  
B- : 23.700  
BØ : 47.100  
D : 101.150  
E : 19.600

Pim: 32 x 84



**Piston Özellikleri**  
(Piston Features)

Gözarası Düz  
(Flat Eye Gap)



**Piston Parça No**  
(Piston Part No)

87-206800-32  
87-70768-STDC

87-206806-32  
87-70768 040 C

87-206808-32  
87-70768 060



**Segman Seti**  
(Ring Set)

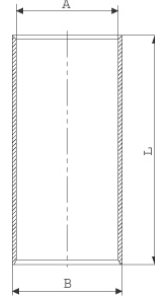
06-206800-40-STD  
06-206806-40 0,40 mm  
06-206808-40 0,60 mm

2.500 CR KV1  
2.500 STD  
5.500 CR GOE



**Silindir Gömleği**  
(Liner)

14-010170-00-D  
B : 103.000  
L : 187.000



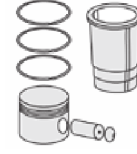
14-010171-00-D  
B : 103.500  
L : 187.000

Dış çap 0,5 mm farklı  
(Outer Diameter 0,5mm  
Different)

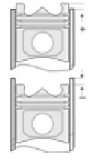
14-010172-00-D  
B : 104.000  
L : 187.000

Dış çap 1,0 mm farklı  
(Outer Diameter 1,0mm  
Different)

14-021540-00-D  
B : 103.000  
L : 187.000  
D : 104.000  
C : 5.000



**Silindir Kit**  
(Assembly Set)



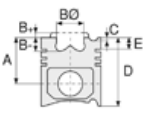
**Piston - Blok Montaj**  
**Yüksekliği**  
(Piston - Block  
Assembly Height)

+ 0,46 / + 0,79

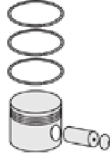




**Motor Özellikleri**  
(Engine Specifications)



**Piston Ölçüleri**  
(Piston Dimensions)



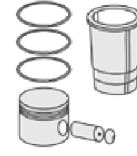
**Piston Parça No**  
(Piston Part No)



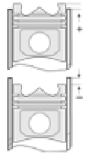
**Segman Seti**  
(Ring Set)



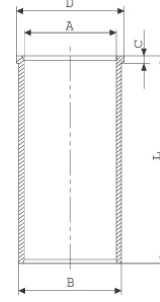
**Silindir Gömleği**  
(Liner)



**Silindir Kit**  
(Assembly Set)



**Piston - Blok Montaj**  
**Yüksekliği**  
(Piston - Block  
Assembly Height)



14-021541-00-D

B : 103.500

L : 187.000

D : 104.500

C : 5.000

Dış çap 0,5 mm farklı  
(Outer Diameter 0,5mm  
Different)

14-021542-00-D

B : 104.000

L : 187.000

D : 105.000

C : 5.000

Dış çap 1,0 mm farklı  
(Outer Diameter 1,0mm  
Different)





**Motor Özellikleri**  
(Engine Specifications)

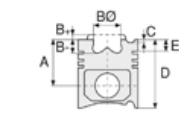
İmalatçı (Manufacturer):  
IVECO TRK  
Çap (Diameter): 100  
FM Grup No: 4106

**8025.02**  
2 Sil. Dizel 1728cc 24 Kw  
(32 PS) 17:1  
1973....

**8030.02, 8035.02**  
3 Sil. Dizel 2592cc 37/45  
Kw (50/62 PS) 17:1  
1973....

**8040.02, 8045.02**  
4 Sil. Dizel 3456cc 44/47/  
56 Kw (60/64/76 PS) 17:1  
1973....

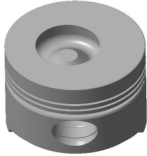
**8060.02, 8065.02**  
6 Sil. Dizel 5187cc 74/88  
Kw (100/120 PS) 17:1  
616 N 3/4, 625 N 35, 650  
N3, 662 N3, AD4 FL4C,  
TERRA:4, TRAKTOR 150,  
TRAKTOR 350, TRAKTOR  
355, TRAKTOR 480,  
TRAKTOR 680  
1973....



**Piston Ölçüleri**  
(Piston Dimensions)

A : 59.650  
B- : 23.500  
BØ : 45.400  
BX : 5.000  
D : 101.150  
E : 19.600

Pim: 32 x 84



**Piston Özellikleri**  
(Piston Features)

Gözarası Düz  
(Flat Eye Gap)



**Piston Parça No**  
(Piston Part No)

87-206800-22  
87-70769-STD  
  
87-206806-22  
87-70769 0,40  
  
87-206808-22  
87-70769 060



**Segman Seti**  
(Ring Set)

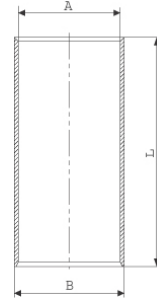
06-206800-40-STD  
06-206806-40 0,40 mm  
06-206808-40 0,60 mm

2.500 CR KV1  
2.500 STD  
5.500 CR GOE



**Silindir Gömleği**  
(Liner)

14-010170-00-D  
B : 103.000  
L : 187.000



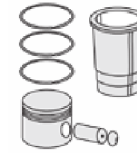
14-010171-00-D  
B : 103.500  
L : 187.000

Dış çap 0,5 mm farklı  
(Outer Diameter 0,5mm  
Different)

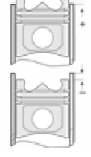
14-010172-00-D  
B : 104.000  
L : 187.000

Dış çap 1,0 mm farklı  
(Outer Diameter 1,0mm  
Different)

14-021540-00-D  
B : 103.000  
L : 187.000  
D : 104.000  
C : 5.000



**Silindir Kit**  
(Assembly Set)



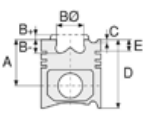
**Piston - Blok Montaj**  
**Yüksekliği**  
(Piston - Block  
Assembly Height)

+ 0,46 / + 0,79

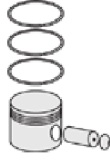




**Motor Özellikleri**  
(Engine Specifications)



**Piston Ölçüleri**  
(Piston Dimensions)



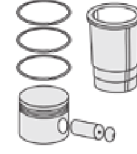
**Piston Parça No**  
(Piston Part No)



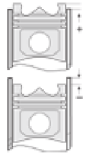
**Segman Seti**  
(Ring Set)



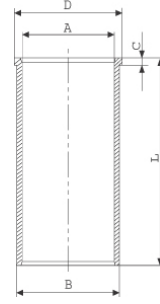
**Silindir Gömleği**  
(Liner)



**Silindir Kit**  
(Assembly Set)



**Piston - Blok Montaj**  
**Yüksekliği**  
(Piston - Block  
Assembly Height)



14-021541-00-D

B : 103.500

L : 187.000

D : 104.500

C : 5.000

Dış çap 0,5 mm farklı  
(Outer Diameter 0,5mm  
Different)

14-021542-00-D

B : 104.000

L : 187.000

D : 105.000

C : 5.000

Dış çap 1,0 mm farklı  
(Outer Diameter 1,0mm  
Different)

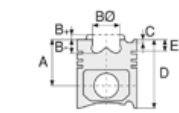




**Motor Özellikleri**  
(Engine Specifications)

İmalatçı (Manufacturer):  
IVECO TRK  
Çap (Diameter): 100  
FM Grup No: 4107

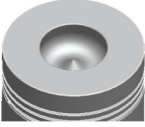
8040.02.000  
008201/477 5035  
4 Sil. Dizel 3456cc 17:1  
OTOYOL KAMYON 50  
NC, TUMOSAN-TÜRK  
TRAKTOR  
1973....



**Piston Ölçüleri**  
(Piston Dimensions)

A : 59.650  
B- : 23.700  
BØ : 47.100  
D : 101.150  
E : 19.600

Pim: 34 x 84



**Piston Özellikleri**  
(Piston Features)

Gözarası Düz  
(Flat Eye Gap)



**Piston Parça No**  
(Piston Part No)

87-836300-12  
87-70770-STDC  
  
87-836306-12  
87-70770 040C  
  
87-836308-12  
87-70770 060C



**Segman Seti**  
(Ring Set)

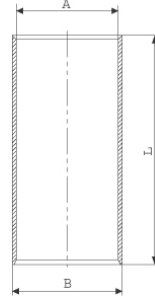
06-836300-30-STD  
06-836306-30 0,40 mm  
06-836308-30 0,60 mm

2.500 CRP KVI  
2.500 P IKA  
4.000 CR GOE



**Silindir Gömleği**  
(Liner)

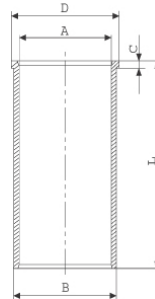
14-010780-00-D  
B : 103.000  
L : 196.000



14-010783-00 D  
B : 103.500  
L : 196.000

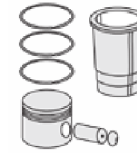
Dış çap 0,50 mm farklı  
(Outer Diameter  
0,50mm Different)

14-020090-00-D  
B : 103.000  
L : 196.000  
D : 104.000  
C : 5.000

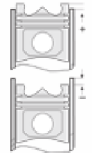


14-020091-00-D  
B : 103.500  
L : 196.000  
D : 104.500  
C : 5.500

Dış çap 0,50 mm farklı  
(Outer Diameter  
0,50mm Different)



**Silindir Kit**  
(Assembly Set)



**Piston - Blok Montaj**  
Yüksekliği  
(Piston - Block  
Assembly Height)

+ 0,365 / + 0,761







IVECO TRK - Ø100

87-70771-STDC

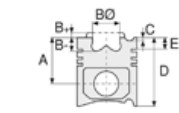


**Motor Özellikleri**  
(Engine Specifications)

İmalatçı (Manufacturer):  
IVECO TRK  
Çap (Diameter):100  
FM Grup No: 4108

**8035.06**  
3 Sil. Dizel 2710cc 41 Kw  
(56 PS)  
TRAKTOR 54 C,  
TRAKTOR 55-56  
1985 - 1988

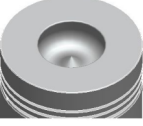
**8040.02, 8045.06**  
4 Sil. Dizel 3613cc 52 Kw  
(70PS)  
TRAKTOR 70-56,  
TRAKTOR 70-56 DT,  
TRAKTOR 70-66  
1985....



**Piston Ölçüleri**  
(Piston Dimensions)

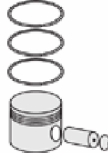
A : 65.100  
B- : 22.700  
BØ : 49.100  
D : 108.500  
E : 17.600

Pim: 38 x 85



**Piston Özellikleri**  
(Piston Features)

Gözarası Düz  
(Flat Eye Gap)



**Piston Parça No**  
(Piston Part No)

87-836300-32  
87-70771-STDC  
  
87-836306-32  
87-70771 040C  
  
87-836308-32  
87-70771 060C



**Segman Seti**  
(Ring Set)

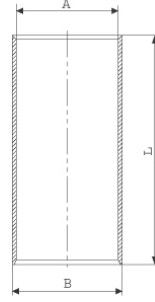
06-836300-30-STD  
06-836306-30 0,40 mm  
06-836308-30 0,60 mm

2.500 CRP KV1  
2.500 P IKA  
4.000 CRP STD



**Silindir Gömleği**  
(Liner)

14-010780-00-D  
B : 103.000  
L : 196.000

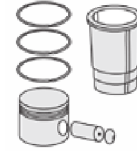


14-020090-00-D  
B : 103.000  
L : 196.000  
D : 104.000  
C : 5.000

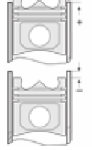


14-020091-00-D  
B : 103.500  
L : 196.000  
D : 104.500  
C : 5.500

Dış çap 0,50 mm farklı  
(Outer Diameter  
0,50mm Different)



**Silindir Kit**  
(Assembly Set)



**Piston - Blok Montaj**  
**Yüksekliği**  
(Piston - Block  
Assembly Height)

+ 0,365 / + 0,761





IVECO TRK - Ø 103

87-70773-STD



**Motor Özellikleri**  
(Engine Specifications)

İmalatçı (Manufacturer):  
IVECO TRK  
Çap (Diameter): 103  
FM Grup No: 4109

**8035.04**

3 Sil. Dizel 2748cc 40/43  
Kw (55/58 PS) 17:1  
505 CS, 565 C, 566 DT,  
570 V/F/DTF/DT, 580 DT,  
588 R 8056, C 8066  
1980 - 1983

**8031.06**

3 Sil. Dizel 2749cc 37/38  
Kw (50/52 PS) 17:1  
RADIADER BENTRA 215,  
RAUPE FL4L

**8040.04.200**

4 Sil. Dizel 3666cc 63 Kw  
(85 PS) 17:1  
TRAKTOR 50-55  
1978 - 1986

**8041.04 ,8045.04.  
300**

4 Sil. Dizel 3666cc 63 Kw  
(85 PS) 17:1  
765 C, 766 DT, 780 DT,  
788 R 8076 FL5, 855 C  
1975 - 1984

**8055.04.200**

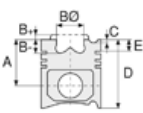
5 Sil. Dizel 5380cc 63/66  
Kw (86/90 PS) 17:1  
880-5 DT/S, 955 C Fr7  
1980 - 1984

**8065.04.200**

6 Sil. Dizel 5496cc 60/85  
Kw (82/115 PS) 17:1  
1000 S/DT, 1180 DT, Fl7  
1976 - 1979

**8060.04.060**

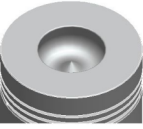
6 Sil. Dizel 5499cc 96/  
123,5 Kw (130/168 PS) 17:1



**Piston Ölçüleri**  
(Piston Dimensions)

A : 59.650  
B- : 22.700  
BØ : 50.000  
D : 101.150  
E : 19.600

Pim: 34 x 89,8



**Piston Özellikleri**  
(Piston Features)

Gözarası Düz  
(Flat Eye Gap)



**Piston Parça No**  
(Piston Part No)

87-034160-02  
87-70773-STD  
87-034108-02  
87-70773 060



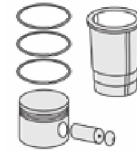
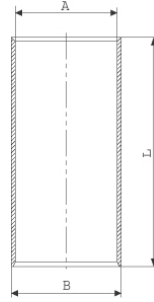
**Segman Seti**  
(Ring Set)

06-034160-10-STD  
06-034168-10 0,60 mm  
2.500 CRP KV1  
2.500 P IKA  
4.000 CRP STD

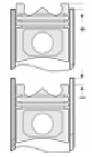


**Silindir Gömleği**  
(Liner)

14-010180-00-D  
B : 107.000  
L : 187.000



**Silindir Kit**  
(Assembly Set)



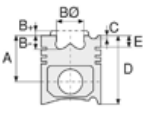
**Piston - Blok Montaj**  
Yüksekliği  
(Piston - Block  
Assembly Height)

+ 0,465 / + 0,785

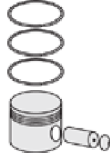


**Motor Özellikleri**  
(Engine Specifications)

100, 110, 315, 65, 79, 80,  
90, 95, IVECO 115, IVECO  
135  
1978 - 1986



**Piston Ölçüleri**  
(Piston Dimensions)



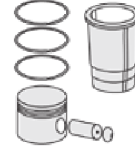
**Piston Parça No**  
(Piston Part No)



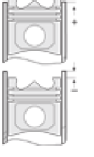
**Segman Seti**  
(Ring Set)



**Silindir Gömleği**  
(Liner)



**Silindir Kit**  
(Assembly Set)



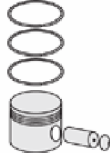
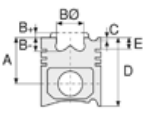
**Piston - Blok Montaj**  
**Yüksekliği**  
(Piston - Block  
Assembly Height)





IVECO TRK - Ø 104

87-70615-STD



**Motor Özellikleri**  
(Engine Specifications)

İmalatçı (Manufacturer):  
IVECO TRK  
Çap (Diameter): 104  
FM Grup No: 4057

**TIER1**  
3 Sil. Dizel 2900cc 60 PS  
YEŞİL MOTOR (Green  
Engine),  
TURBOSUZ (Without  
Turbo)  
TT60 TRK

**TIER1**  
4 Sil. Dizel 3900cc 75 Ps  
YEŞİL MOTOR (Green  
Engine),  
TURBOSUZ (Without  
Turbo)  
TD75 TRK

**TIER1**  
4 Sil. Dizel 3900cc 85 PS  
YEŞİL MOTOR (Green  
Engine),  
TURBOSUZ (Without  
Turbo)  
TD85 TRK

**Piston Ölçüleri**  
(Piston Dimensions)

A : 65.330  
B- : 21.400  
BØ : 49.000  
BX : 3.500  
BY : 3.000  
D : 104.330  
E : 14.830

Pim: 38 x 85



**Piston Özellikleri**  
(Piston Features)

Gözarası Konik  
(Conical Eye Gap)

**Piston Parça No**  
(Piston Part No)

87-836400-02  
87-70615-STD

**Segman Seti**  
(Ring Set)

06-836400-00-STD

2.500 CRP KV1  
2.500 P F14  
4.000 CRP STD

**Silindir Gömleği**  
(Liner)

**Silindir Kit**  
(Assembly Set)

**Piston - Blok Montaj**  
**Yüksekliği**  
(Piston - Block  
Assembly Height)





IVECO TRK - Ø 104

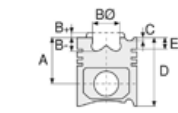
87-70616-STD



**Motor Özellikleri**  
(Engine Specifications)

İmalatçı (Manufacturer):  
IVECO TRK  
Çap (Diameter): 104  
FM Grup No: 4132

**8045.05B.241**  
4 Sil. Dizel 52KW-(71PS)  
ARAZÖR (Spacer), BİCER  
(Combine Harvester)



**Piston Ölçüleri**  
(Piston Dimensions)

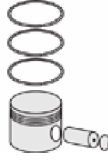
A : 65.330  
B- : 21.400  
BØ : 49.000  
BX : 3.500  
BY : 3.000  
D : 104.330  
E : 14.830

Pim: 38 x 85



**Piston Özellikleri**  
(Piston Features)

Gözarası Konik  
(Conical Eye Gap)



**Piston Parça No**  
(Piston Part No)

87-107700-02  
87-70616-STD



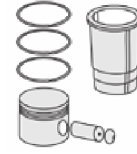
**Segman Seti**  
(Ring Set)

06-107700-00-STD

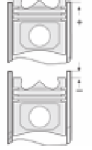
2.500  CRP KV1  
2.500  P IKA  
4.000  CR STD



**Silindir Gömleği**  
(Liner)



**Silindir Kit**  
(Assembly Set)



**Piston - Blok Montaj**  
**Yüksekliği**  
(Piston - Block  
Assembly Height)

1,15 Conta ile  
(With Notch)  
0,30 - 0,40 mm

1,25 Conta ile  
(With Notch)  
0,40 - 0,50 mm





IVECO TRK - Ø 104

87-70791-STD

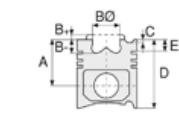


**Motor Özellikleri**  
(Engine Specifications)

İmalatçı (Manufacturer):  
IVECO TRK  
Çap (Diameter): Ø 104  
FM Grup No: 4130

**8035.05**  
3 Sil. Dizel 2900cc  
37-48 Kw(50-65 Bg) 18:1  
TN55, TN65, TN70,  
TN75, TN80, TN90,  
TN95, TT50, TT55,  
TT65, TT75  
2004....

**8045.05/25**  
4 Sil. Dizel 3900cc  
66-74 Kw(90-100 Ps)  
TD95, TL100,  
TL70, TL80, TL90  
2004....



**Piston Ölçüleri**  
(Piston Dimensions)

A : 65.330  
B- : 21.400  
BØ : 48.200  
BX : 3.500  
BY : 3.000  
D : 104.330  
E : 6.680

Pim: 38 x 85



**Piston Özellikleri**  
(Piston Features)

Segman Taşıyıcı  
(Ring Carrier)  
Yağ Püskürtme Oyuğu  
(Oil Jet Cut-out)  
Gözarası Konik  
(Conical Eye Gap)



**Piston Parça No**  
(Piston Part No)

87-837600-22  
87-70791-STD



**Segman Seti**  
(Ring Set)

06-837600-90-STD

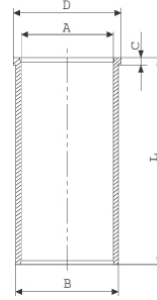
3.000 CKP KVI  
2.500 P IKA  
4.000 CRP STD

Goetze® LKZ-Ring®



**Silindir Gömleği**  
(Liner)

14-010940-00-D  
B : 107.000  
L : 198.000

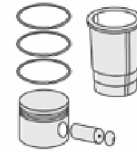


14-010942-00-D  
B : 107.500  
L : 198.000

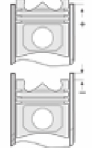
Dış çap 0,5 mm farklı  
(Outside Diameter  
0,5 mm Different)

14-010943-00-D  
B : 108.000  
L : 198.000

Dış çap 1,0 mm farklı  
(Outside Diameter  
1,0 mm Different)



**Silindir Kit**  
(Assembly Set)



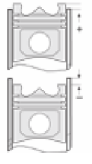
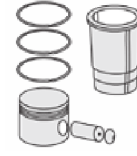
**Piston - Blok Montaj**  
Yüksekliği  
(Piston - Block  
Assembly Height)





IVECO TRK - Ø 104

87-72095-STD



**Motor Özellikleri**  
(Engine Specifications)

**Piston Ölçüleri**  
(Piston Dimensions)

**Piston Parça No**  
(Piston Part No)

**Segman Seti**  
(Ring Set)

**Silindir Gömleği**  
(Liner)

**Silindir Kit**  
(Assembly Set)

**Piston - Blok Montaj**  
Yüksekliği  
(Piston - Block  
Assembly Height)

İmalatçı (Manufacturer):  
IVECO TRK  
Çap (Diameter): 104  
FM Grup No: 4135

A : 65.400  
B- : 23.250  
BØ : 45.500  
BX : 6.000  
BY : 3.000  
D : 104.400  
E : 6.700

87-837600-62  
87-72095-STD

06-837600-90-STD

3.000 CKP KV1  
2.500 P IKA  
4.000 CRP STD

Goetze® LKZ-Ring®

**Stage IIIA (Tier 3)**  
4 Sil. Dizel 75-85-95 HP  
TÜMOSAN ( 8085 ),  
TÜMOSAN ( 8095 ),  
TÜMOSAN (8075)  
2013 - 2016

Pim: 38 x 85

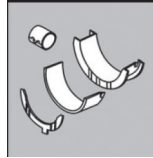


**Piston Özellikleri**  
(Piston Features)

Segman Taşıyıcı  
(Ring Carrier)  
Yağ Püskürtme Oyuğu  
(Oil Jet Cut-out)  
Gözarası Konik  
(Conical Eye Gap)

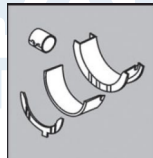
**Ana Yatak**  
(Main Bearing)

72-4546 STD/72-4556 STD



**Kol Yatak**  
(Connecting Rod Bearing)

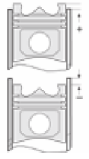
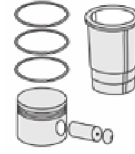
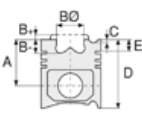
71-4104 STD/71-4389 STD





IVECO TRK - Ø 104

87-72856-STD



**Motor Özellikleri**  
(Engine Specifications)

İmalatçı (Manufacturer):  
IVECO TRK  
Çap (Diameter): Ø 104  
FM Grup No: 4134

8045.25D.313T  
4 Sil. Dizel 3908cc  
76KW-110 HP  
TD5.110  
2016--->

**Piston Ölçüleri**  
(Piston Dimensions)

A : 65.330  
B - : 18.200  
BØ : 58.000  
BX : 2.500  
BY : 3.000  
C1 : 1.500  
D : 104.330  
E : 6.680

Pim: 38 x 85



**Piston Özellikleri**  
(Piston Features)

Segman Taşıyıcı  
(Ring Carrier)  
Yağ Püskürtme Oyuğu  
(Oil Jet Cut-out)  
Gözarası Konik  
(Conical Eye Gap)

**Piston Parça No**  
(Piston Part No)

87-837600-42  
87-72856-STD

**Segman Seti**  
(Ring Set)

06-837600-90-STD

3.500 CKP KV1  
2.500 P IKA  
4.000 CRP STD

Goetze® LKZ-Ring®

**Silindir Gömleği**  
(Liner)

**Silindir Kit**  
(Assembly Set)

**Piston - Blok Montaj**  
Yüksekliği  
(Piston - Block  
Assembly Height)

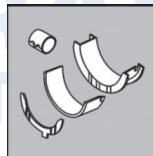
+0,20 / +0,30  
+0,30 / +0,45

**Ana Yatak**  
(Main Bearing)



72-4546/5 STD

**Kol Yatak**  
(Connecting Rod Bearing)



71-4104 STD

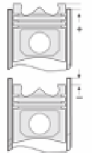
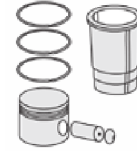






IVECO TRK - Ø 104

87-72871-STD



**Motor Özellikleri**  
(Engine Specifications)

İmalatçı (Manufacturer):  
IVECO TRK  
Çap (Diameter): 104  
FM Grup No: 4133

**F4HE9684JX100**  
**EURO 3**

6 Sil. Dizel 136kw-184PS  
TC 56 SERISI

**Piston Ölçüleri**  
(Piston Dimensions)

A : 62.500  
B- : 20.900  
BØ : 59.600  
D : 96.500  
E : 10.100

Pim: 38 x 82



**Piston Özellikleri**  
(Piston Features)

Segman Taşıyıcı  
(Ring Carrier)  
Soğutma Kanallı  
(Coolin Gallery)  
Yağ Püskürtme Oyuğu  
(Oil Jet Cut-out)  
Gözarası Konik  
(Conical Eye Gap)

**Piston Parça No**  
(Piston Part No)

87-844700-02  
87-72871-STD

**Segman Seti**  
(Ring Set)

06-844700-00-STD

3.000  CKS KV1  
2.385  P GOE  
4.000  CKS GOE

**Silindir Gömleği**  
(Liner)

**Silindir Kit**  
(Assembly Set)

**Piston - Blok Montaj**  
**Yüksekliği**  
(Piston - Block  
Assembly Height)





IVECO TRK - Ø 104

87-72872-STD

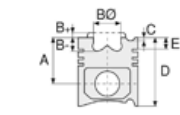


**Motor Özellikleri**  
(Engine Specifications)

İmalatçı (Manufacturer):  
IVECO TRK  
Çap (Diameter): 104  
FM Grup No: 4082

**F4GEO484C -  
F4GEO454A**

4 Sil. Dizel 4485cc 74-94  
KW / 101-128 PS  
BICER DOVER (Combine  
Reaper), IS  
MAKINASI (Heavy  
Machinery),  
TRAKTOR (Tractor)  
2006...



**Piston Ölçüleri**  
(Piston Dimensions)

A : 62.400  
B- : 24.100  
BØ : 52.300  
BX : 6.000  
D : 95.900  
E : 7.000

Pim: 38 x 81,9



**Piston Özellikleri**  
(Piston Features)

Segman Taşıyıcı  
(Ring Carrier)  
Yağ Püskürtme Oyuğu  
(Oil Jet Cut-out)  
Gözarası Konik  
(Conical Eye Gap)



**Piston Parça No**  
(Piston Part No)

87-844700-22  
87-72872-STD



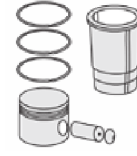
**Segman Seti**  
(Ring Set)

06-844700-00-STD

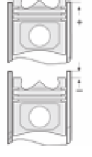
3.000  CKS KV1  
2.385  P GOE  
4.000  CKS GOE



**Silindir Gömleği**  
(Liner)



**Silindir Kit**  
(Assembly Set)



**Piston - Blok Montaj**  
**Yüksekliği**  
(Piston - Block  
Assembly Height)

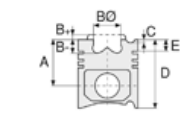




**Motor Özellikleri**  
(Engine Specifications)

İmalatçı (Manufacturer):  
IVECO TRK  
Çap (Diameter): 106,5  
FM Grup No: 4136

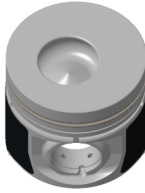
**Stage IIIA (Tier 3)**  
4 Sil. Dizel 105 BG-115 BG  
TÜMOSAN (9115),  
TÜMOSAN (8105)



**Piston Ölçüleri**  
(Piston Dimensions)

A : 65.400  
B- : 23.200  
BØ : 45.500  
BX : 6.000  
BY : 3.000  
D : 104.400  
E : 14.400

Pim: 38 x 85



**Piston Özellikleri**  
(Piston Features)

Segman Taşıyıcı  
(Ring Carrier)  
Yağ Püskürtme Oyuğu  
(Oil Jet Cut-out)  
Gözarası Konik  
(Conical Eye Gap)



**Piston Parça No**  
(Piston Part No)

87-894600-02  
87-72090-STD



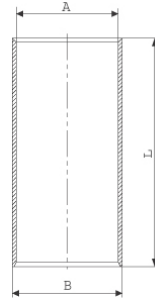
**Segman Seti**  
(Ring Set)

06-894600-00-STD  
3.100 CR KV1  
2.385 P STD  
3.500 CR STD

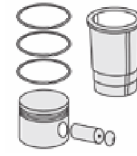
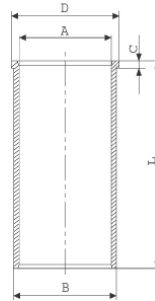


**Silindir Gömleği**  
(Liner)

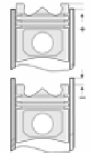
14-011680-00 D  
B : 109.500  
L : 194.000



14-022500-00 D  
B : 109.500  
L : 194.000  
D : 111.000  
C : 5.000



**Silindir Kit**  
(Assembly Set)



**Piston - Blok Montaj**  
Yüksekliği  
(Piston - Block  
Assembly Height)

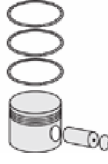
+0,75+0,85





IVECO TRK - Ø 111,76

87-70612-STD



**Motor Özellikleri**  
(Engine Specifications)

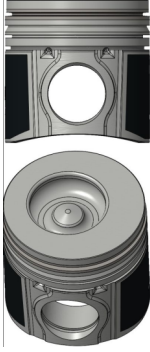
İmalatçı (Manufacturer):  
IVECO TRK  
Çap (Diameter): Ø 111,76  
FM Grup No: 4138

675 TA/AA-AB-AG-  
AH-AJ-CA-CB-CC-CF  
4 Sil. Dizel  
152 KW-207 HP  
TC 56 Bicerdöver,  
CX740/CX840/CS540/  
CS640/TC56

**Piston Ölçüleri**  
(Piston Dimensions)

A : 73.000  
B- : 21.000  
B : 58.900  
BX : 5.050  
BY : 1.700  
D : 111.000  
E : 9.600

Pim: 44,5 x 91,75



**Piston Özellikleri**  
(Piston Features)

Segman Taşıyıcı  
(Ring Carrier)  
Soğutma Kanallı  
(Coolin Gallery)  
Yağ Püskürtme Oyuğu  
(Oil Jet Cut-out)  
Gözarası Konik  
(Conical Eye Gap)

**Piston Parça No**  
(Piston Part No)

87-882700-02  
87-70612-STD

**Segman Seti**  
(Ring Set)

06-882700-00 STD  
3.160 CR KV1  
2.390 P KV1  
3.000 CR ST

**Silindir Gömleği**  
(Liner)

**Silindir Kit**  
(Assembly Set)

**Piston - Blok Montaj**  
Yüksekliği  
(Piston - Block  
Assembly Height)





IVECO TRK - Ø 115

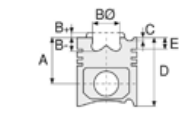
87-71706-STD



**Motor Özellikleri**  
(Engine Specifications)

İmalatçı (Manufacturer):  
IVECO TRK  
Çap (Diameter): 115  
FM Grup No: 4118

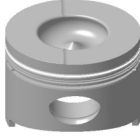
8365.25  
6 Sil. Dizel 8100cc  
FIAT ALLIS, FL 14E  
1980...



**Piston Ölçüleri**  
(Piston Dimensions)

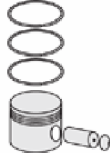
A : 76.500  
B- : 27.900  
BØ : 58.500  
D : 140.500  
E : 18.650

Pim: 42 x 97



**Piston Özellikleri**  
(Piston Features)

Segman Taşıyıcı  
(Ring Carrier)  
Gözarası Düz  
(Flat Eye Gap)



**Piston Parça No**  
(Piston Part No)

87-245500-22  
87-71706-STD



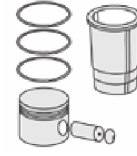
**Segman Seti**  
(Ring Set)

06-245500-00-STD

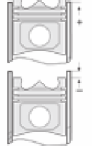
3.000 CRP IKA  
2.500 P STD  
4.000 CRP STD



**Silindir Gömleği**  
(Liner)



**Silindir Kit**  
(Assembly Set)



**Piston - Blok Montaj**  
**Yüksekliği**  
(Piston - Block  
Assembly Height)

- 0,298 / + 0,614

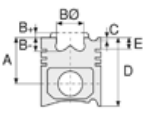




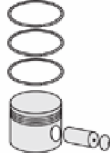
**Motor Özellikleri**  
(Engine Specifications)

İmalatçı (Manufacturer):  
IVECO TRK  
Çap (Diameter): 120  
FM Grup No: 4119

6 Sil. Dizel  
643 N, 643 N1, 643 T



**Piston Ölçüleri**  
(Piston Dimensions)



**Piston Parça No**  
(Piston Part No)



**Segman Seti**  
(Ring Set)

06-835200-20-STD

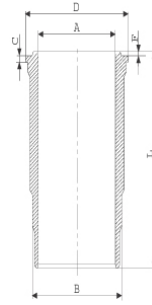
3.500  CR IKA  
3.000  P STD  
3.000  P STD  
5.500  CRP STD



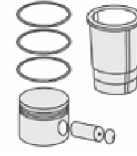
**Silindir Gömleği**  
(Liner)

14-450020-00-WH

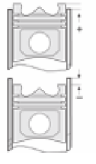
B : 134.000  
L : 249.250  
D : 144.800  
C : 10.100  
F : 1.000



Dış Yüzeyi Fosfat Kaplı  
(Outer Surface  
Phosphate Coated)



**Silindir Kit**  
(Assembly Set)



**Piston - Blok Montaj**  
**Yüksekliği**  
(Piston - Block  
Assembly Height)

