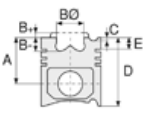




KAMAZ - Ø 120

87-71290-STD



Motor Özellikleri
(Engine Specifications)

İmalatçı (Manufacturer):
KAMAZ
Çap (Diameter): 120
FM Grup No: 4401

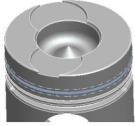
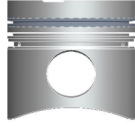
54112
8 Sil. Dizel
ENDUSTRIYEL (Industrial)

53212
8 Sil. Dizel
ENDUSTRIYEL (Industrial)

Piston Ölçüleri
(Piston Dimensions)

A : 76.100
B- : 26.300
BØ : 60.000
C1 : 2.400
C2 : 2.700
D : 123.000
E : 22.000

Pim: 45 x 95



Piston Özellikleri
(Piston Features)

Segman Taşıyıcı
(Ring Carrier)
Gözarası Konik
(Conical Eye Gap)

Piston Parça No
(Piston Part No)

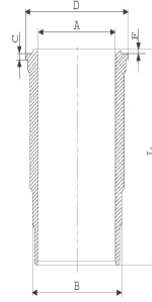
87-252700-02
87-71290-STD

Segman Seti
(Ring Set)

06-252700-10-STD
3.000 CRP KV1
3.000 CRP KV1
5.000 CRP STD

Silindir Gömleği
(Liner)

14-458500-00-WH
B : 134.000
L : 224.000
D : 146.000
C : 10.300
F : 1.300



Dış Yüzey Fosfat Kaplı
(Outer Surface
Phosphate Coated)

Silindir Kit
(Assembly Set)

88-252700-02-STD
88-71290-STD

Piston - Blok Montaj
Yüksekliği
(Piston - Block
Assembly Height)





KAMAZ - Ø 120

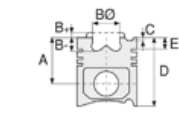
87-71291-STD



Motor Özellikleri
(Engine Specifications)

İmalatçı (Manufacturer):
KAMAZ
Çap (Diameter): 120
FM Grup No: 4402

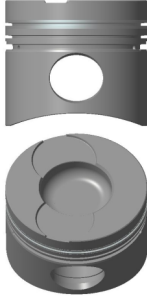
V8
8 Sil. Dizel
BTR 80-ZPT



Piston Ölçüleri
(Piston Dimensions)

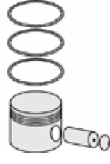
A : 76.100
B- : 25.100
B : 60.000
C1 : 2.400
C2 : 2.700
D : 123.000
E : 22.000

Pim: 45 x 95



Piston Özellikleri
(Piston Features)

Segman Taşıyıcı
(Ring Carrier)
Gözarası Konik
(Conical Eye Gap)



Piston Parça No
(Piston Part No)

87-815200-02
87-71291-STD



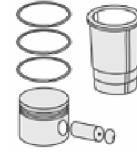
Segman Seti
(Ring Set)

06-815200-00-STD

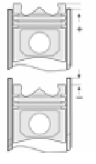
3.000 CR KV1
3.000 P IKA
5.000 CR STD



Silindir Gömleği
(Liner)



Silindir Kit
(Assembly Set)



Piston - Blok Montaj
Yüksekliği
(Piston - Block
Assembly Height)





KAMAZ - Ø 120

87-71292-STD

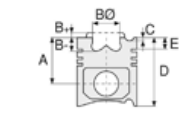


Motor Özellikleri
(Engine Specifications)

İmalatçı (Manufacturer):
KAMAZ
Çap (Diameter): 120
FM Grup No: 4404

Euro 2
Dizel

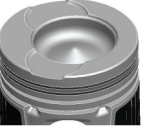
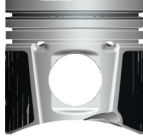
740.50-360, 740.51-320,
740.52-260, 740.53-260,
740.54-300



Piston Ölçüleri
(Piston Dimensions)

A : 71.000
B- : 21.600
BØ : 70.000
BX : 5.000
C1 : 2.500
C2 : 2.800
D : 117.800
E : 13.500

Pim: 45 x 95



Piston Özellikleri
(Piston Features)

Segman Taşıyıcı
(Ring Carrier)
Yağ Püskürtme Oyuğu
(Oil Jet Cut-out)
Gözarası Konik
(Conical Eye Gap)



Piston Parça No
(Piston Part No)

87-881600-02
87-71292-STD



Segman Seti
(Ring Set)

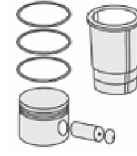
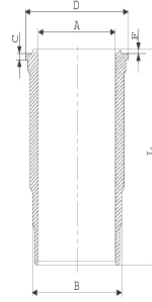
06-881600-00-STD

3.500 CRP KV1
3.000 CRP KV1
4.000 CRP STD



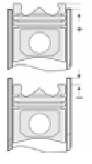
Silindir Gömleği
(Liner)

14-450930-00-WH
B : 134.000
L : 224.000
D : 146.000
C : 10.300
F : 1.300



Silindir Kit
(Assembly Set)

88-881600-02-STD
88-71292-STD



Piston - Blok Montaj
Yüksekliği
(Piston - Block
Assembly Height)

14-450980-00-WH
B : 134.000
L : 221.000
D : 146.000
C : 10.300
F : 1.300

88-881600-12-STD
88-71292-STD

