



LEYLAND - Ø 127

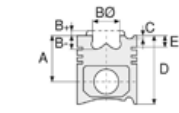
87-71445-STD



Motor Özellikleri
(Engine Specifications)

İmalatçı (Manufacturer):
LEYLAND
Çap (Diameter): Ø 127
FM Grup No: 5004

TL 11
6 Sil. Dizel 11100cc 15.8:1
TURBO
BİSON 4BN,
BUFFALO 4BU,
CONSTRUCTOR 24.21,
CONSTRUCTOR 24.23,
CONSTRUCTOR 30.21,
CONSTRUCTOR 30.26,
CRUİSER 16.18,
CRUİSER 16.21,
CRUİSER 16.23,
CRUİSER 16.26,
LYNX, NATIONAL,
OLYMPIAN,
ROUTEMAN III,
TİGER, TİTAN
1979....



Piston Ölçüleri
(Piston Dimensions)

A : 101.040
B- : 29.600
BØ : 71.500
BX : 5.100
C1 : 2.770
D : 169.580
E : 25.950

Pim: 50,8 x 105



Piston Özellikleri
(Piston Features)

Segman Taşıyıcı
(Ring Carrier)
Sert Anotlama
(Hard Anodizing)
Gözarası Düz
(Flat Eye Gap)



Piston Parça No
(Piston Part No)

87-521000-02
87-71445-STD



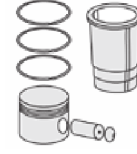
Segman Seti
(Ring Set)

06-521000-00-STD

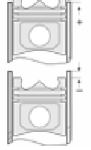
3.715 STD
2.375 STD
4.737 STD



Silindir Gömleği
(Liner)



Silindir Kit
(Assembly Set)



Piston - Blok Montaj
Yüksekliği
(Piston - Block
Assembly Height)

