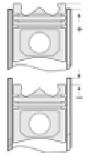
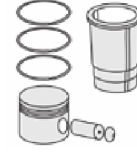
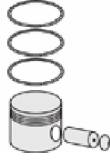
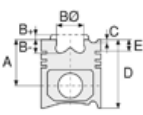
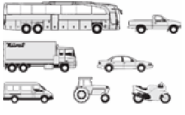




LISTER - Ø 95,25

87-71462-STD



Motor Özellikleri
(Engine Specifications)

Piston Ölçüleri
(Piston Dimensions)

Piston Parça No
(Piston Part No)

Segman Seti
(Ring Set)

Silindir Gömleği
(Liner)

Silindir Kit
(Assembly Set)

Piston - Blok Montaj
Yüksekliği
(Piston - Block
Assembly Height)

İmalatçı (Manufacturer):
LISTER
Çap (Diameter): Ø 95,25
FM Grup No: 5101

A : 65.090
B- : 16.140
B0 : 52.530
BX : 6.200
D : 103.190
E : 15.110

87-523800-02
87-71462-STD
87-523807-02
87-71462 0,50
87-823811-02
87-71462 1,00

06-523800-00-STD
06-523807-00 0,50 mm
06-823811-00 1,00 mm

3.180  CR KV1
2.385  STD
2.385  STD
4.747  CR STD
4.760  STD

ST1

1 Sil. Dizel 630cc
Hava Soğutmalı
(Air Cooled)

Endüstriyel (Industrial)
1978 - 1985



ST2

2 Sil. Dizel 1270cc
Hava Soğutmalı
(Air Cooled)

Endüstriyel (Industrial)
1975 - 1983



ST3

3 Sil. Dizel 1900cc
Hava Soğutmalı
(Air Cooled)

Endüstriyel (Industrial)
1975 - 1983

Piston Özellikleri
(Piston Features)

Gözarası Düz
(Flat Eye Gap)

TS1

1 Sil. Dizel 635cc
Hava Soğutmalı
(Air Cooled)

Endüstriyel (Industrial)
1984....

TS2

2 Sil. Dizel 1270cc
Hava Soğutmalı
(Air Cooled)

ENDÜSTRİYEL

TS3

3 Sil. Dizel 1900cc
Hava Soğutmalı
(Air Cooled)

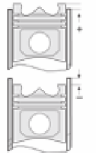
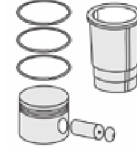
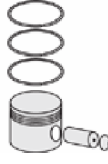
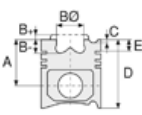
Endüstriyel (Industrial)





LISTER - Ø 107,95

87-71463-STD



Motor Özellikleri
(Engine Specifications)

Piston Ölçüleri
(Piston Dimensions)

Piston Parça No
(Piston Part No)

Segman Seti
(Ring Set)

Silindir Gömleği
(Liner)

Silindir Kit
(Assembly Set)

Piston - Blok Montaj
Yüksekliği
(Piston - Block
Assembly Height)

İmalatçı (Manufacturer):
LISTER
Çap (Diameter): Ø 107,95
FM Grup No: 5102

A : 73.090
B- : 20.550
B0 : 50.700
BX : 6.400
D : 127.000
E : 19.200

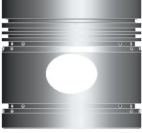
87-269600-02
87-71463-STD
87-269607-02
87-71463 050
87-269611-02
87-71463 100

06-269600-20-STD
06-269607-20 0,50 mm
06-269611-20 1,00 mm

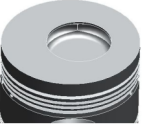
3.970 CR KV1
3.175 STD
3.175 STD
4.763 CR STD
4.763 STD

HR2
2 Sil. Dizel 2090cc
21,7 Kw (29,5 PS)
Hava Soğutmalı
(Air Cooled)
Endüstriyel (Industrial)
1967....

Pim: 39,688 x 88,8



HR3
3 Sil. Dizel 3140cc
32,7 Kw (44,25 PS)
Hava Soğutmalı
(Air Cooled)
Endüstriyel (Industrial)
1967....



Piston Özellikleri
(Piston Features)

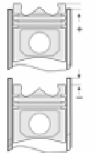
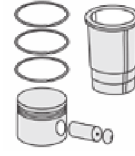
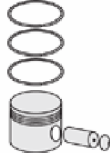
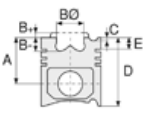
Gözarası Düz
(Flat Eye Gap)





LISTER - Ø 108

87-71464-STD



Motor Özellikleri
(Engine Specifications)

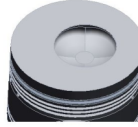
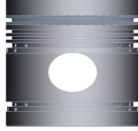
İmalatçı (Manufacturer):
LISTER
Çap (Diameter): Ø 108
FM Grup No: 5109

HRW3
3 Sil. Dizel 3140cc
Watercooled
Endüstriyel (Industrial)
1967....

Piston Ölçüleri
(Piston Dimensions)

A : 73.030
B- : 21.720
BØ : 50.800
BX : 6.350
D : 127.000
E : 19.270

Pim: 39,688 x 88,72



Piston Özellikleri
(Piston Features)

Segman Taşıyıcı
(Ring Carrier)
Gözarası Düz
(Flat Eye Gap)

Piston Parça No
(Piston Part No)

87-522100-02
87-71464-STD

Segman Seti
(Ring Set)

06-522100-00-STD

3.969  CR KV1
3.175  STD
3.175  STD
4.763  CR STD
4.763  STD

Silindir Gömleği
(Liner)

Silindir Kit
(Assembly Set)

Piston - Blok Montaj
Yüksekliği
(Piston - Block
Assembly Height)

