



MAN - Ø 70

06-875000-00-STD

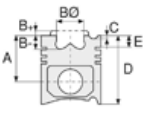


**Motor Özellikleri**  
(Engine Specifications)

İmalatçı (Manufacturer):  
MAN

Çap (Diameter): Ø 70  
FM Grup No: 5401

2 Sil. Dizel  
Kompresör (Compressor)



**Piston Ölçüleri**  
(Piston Dimensions)

**Piston Özellikleri**  
(Piston Features)



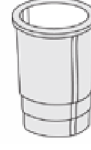
**Piston Parça No**  
(Piston Part No)



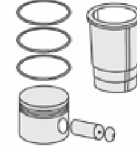
**Segman Seti**  
(Ring Set)

06-875000-00-STD

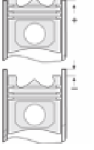
2.000  P STD  
2.000  P STD  
2.500  P STD  
4.000  P STD



**Silindir Gömleği**  
(Liner)



**Silindir Kit**  
(Assembly Set)



**Piston - Blok Montaj**  
Yüksekliği  
(Piston - Block  
Assembly Height)





MAN - Ø 90

87-71546-STDC



**Motor Özellikleri**  
(Engine Specifications)

İmalatçı (Manufacturer):  
MAN  
Çap (Diameter): Ø 90  
FM Grup No: 5402

D 2530, 2538, 2555,  
2556, 2566  
1 Sil. Dizel  
Kompresör (Compressor)  
1975....

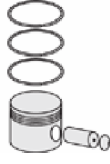
**Piston Ölçüleri**  
(Piston Dimensions)

A : 35.000  
D : 57.500  
E : 4.000  
Pim: 20 x 60



**Piston Özellikleri**  
(Piston Features)

Gözarası Düz  
(Flat Eye Gap)



**Piston Parça No**  
(Piston Part No)

87-404500-62  
87-71546-STDC  
  
87-404507-62  
87-71546 050C  
  
87-404511-62  
87-71546 100C



**Segman Seti**  
(Ring Set)

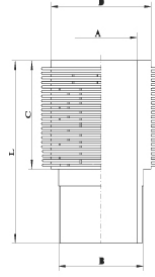
06-404500-20-STD  
06-404505-20 0,25 mm  
06-404507-20 0,50 mm  
06-404509-20 0,75 mm  
06-404511-20 1,00 mm

2.500 GOE  
2.500 GOE  
4.000 STD



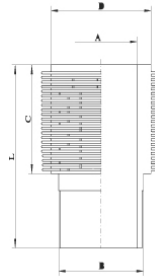
**Silindir Gömleği**  
(Liner)

14-000240-00-WH  
B : 95.000  
L : 104.000  
D : 140.000  
C : 94.000

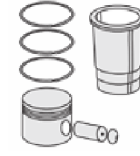


Su Soğutmalı  
(Water Cooled)

14-000230-00-DH  
B : 95.000  
L : 104.000  
D : 127.000  
C : 94.000

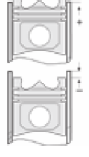


Hava Soğutmalı  
(Air Cooled)



**Silindir Kit**  
(Assembly Set)

88-404500-72-STD  
88-71546-STDD



**Piston - Blok Montaj**  
Yüksekliği  
(Piston - Block  
Assembly Height)



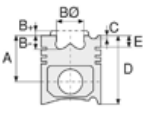


MAN - Ø 90

87-71546-STD



**Motor Özellikleri**  
(Engine Specifications)



**Piston Ölçüleri**  
(Piston Dimensions)



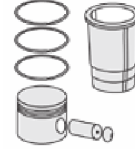
**Piston Parça No**  
(Piston Part No)



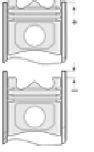
**Segman Seti**  
(Ring Set)



**Silindir Gömleği**  
(Liner)

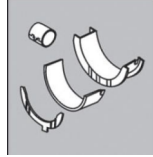


**Silindir Kit**  
(Assembly Set)



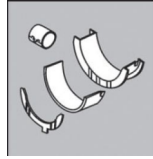
**Piston - Blok Montaj**  
**Yüksekliği**  
(Piston - Block  
Assembly Height)

**Ana Yatak**  
(Main Bearing)



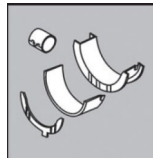
H993/6 STD

**Kol Yatak**  
(Connecting Rod Bearing)



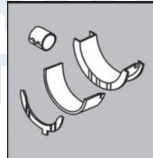
71-3289/2 STD

**Eksantrik Yatak**  
(Camshaft Bearing)



N110/6L STD

**Kol Burcu**  
(Small End Bushing)



55-2862 SEMI





MAN - Ø 102

06-283300-20-STD

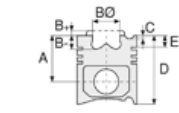


**Motor Özellikleri**  
(Engine Specifications)

İmalatçı (Manufacturer):  
MAN  
Çap (Diameter): Ø 102  
FM Grup No: 5405

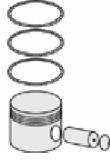
**D 0226 MK/MKF/  
MLE/MKFA/MKH**  
6 Sil. Dizel 5687cc  
125/154 Kw (170/209 PS)  
17,5:1  
12.170, 12.192, 14.170,  
14.192, 16.170  
1983....

**D 0226 MTE/MTKE**  
6 Sil. Dizel 5687cc  
81 Kw (110 PS) 17,5:1  
Endüstriyel (Industrial)  
1983....



**Piston Ölçüleri**  
(Piston Dimensions)

**Piston Özellikleri**  
(Piston Features)



**Piston Parça No**  
(Piston Part No)



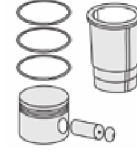
**Segman Seti**  
(Ring Set)

06-283300-20-STD

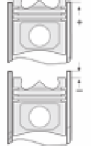
3.000  CR IKA  
2.500  STD  
4.000  CR STD



**Silindir Gömleği**  
(Liner)



**Silindir Kit**  
(Assembly Set)



**Piston - Blok Montaj**  
Yüksekliği  
(Piston - Block  
Assembly Height)





MAN - Ø 108

87-71530-STD



**Motor Özellikleri**  
(Engine Specifications)

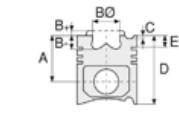
İmalatçı (Manufacturer):  
MAN  
Çap (Diameter): Ø 108  
FM Grup No: 5506

**DO836 LOH64**  
**EURO 5**

6 Sil. Dizel 6871cc  
213KW/290PS  
GÜLERYÜZ COBRA GL9L,  
GÜLERYÜZ COBRA  
GM 280, OTOKAR  
VECTIO, TEZELLER  
LF 1200

**DO834 EURO 4**

4 Sil. Dizel 4580cc  
110-151KW / 150-206 PS  
LFL 50, LFL 51, LFL 52,  
LFL 53



**Piston Ölçüleri**  
(Piston Dimensions)

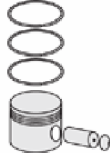
A : 63.900  
B- : 18.470  
BØ : 77.600  
C1 : 1.700  
D : 103.000  
E : 10.000

Pim: 44 x 88



**Piston Özellikleri**  
(Piston Features)

Segman Taşıyıcı  
(Ring Carrier)  
Soğutma Kanallı  
(Coolin Gallery)  
Yağ Püskürtme Oyuğu  
(Oil Jet Cut-out)  
Burçlu Piston  
(Bushing Piston)  
Gözarası Konik  
(Conical Eye Gap)



**Piston Parça No**  
(Piston Part No)

87-864900-02  
87-71530-STD  
87-864900-03  
87-71530-STD1  
0,20 mm Kısa (Short)  
87-864900-04  
87-71530-STD2  
0,40 mm Kısa (Short)

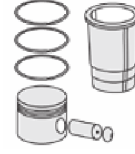


**Segman Seti**  
(Ring Set)

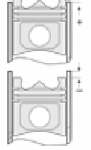
06-864900-20-STD  
3.000 CK KV4  
2.500 CR GOE  
3.000 CK KV1  
Yağ Segmanı Matkap  
Delik (Oil Ring Drill Hole)



**Silindir Gömleği**  
(Liner)

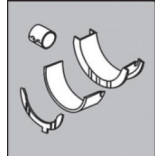


**Silindir Kit**  
(Assembly Set)



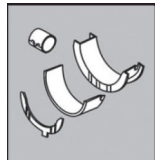
**Piston - Blok Montaj**  
**Yüksekliği**  
(Piston - Block  
Assembly Height)

**Ana Yatak**  
(Main Bearing)



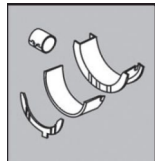
72-4749 STD

**Kol Yatak**  
(Connecting Rod Bearing)



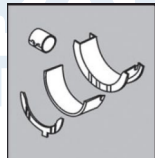
71-4748

**Ay Yatak**  
(Thrust Washer)



A290/4 STD

**Kol Burcu**  
(Small End Bushing)



55-4752 SEMI





MAN - Ø 108

87-71539-STD



**Motor Özellikleri**  
(Engine Specifications)

İmalatçı (Manufacturer):  
MAN  
Çap (Diameter): Ø 108  
FM Grup No: 5473

**D 0834 LFL 41**  
**Euro 3 C.Rail**  
4 Sil. Dizel 4580cc  
132 Kw(180 Hp)  
TGL 12.180, TGL 8.180  
2006....

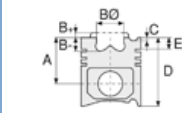
**D 0834 LFL 40**  
**Euro 3 C.Rail**  
4 Sil. Dizel 4580cc  
110 Kw(150 Hp)  
TGL 8.150  
2006....

**D 0836 LFL 40**  
**Euro 3 C.Rail**  
6 Sil. Dizel 6871cc  
173 Kw(235 Ps)  
TGL 8.240, TGL10.240,  
TGL12.240, TGM 13.240,  
TGM 18.240  
2005....

**D 0836 LFL 41**  
**Euro 3 C.Rail**  
6 Sil. Dizel 6871cc  
206 Kw(280 Ps)  
TGM 13.280, TGM 18.280  
2006....

6 Sil. Dizel 6871cc  
240 Kw(326 Ps)  
TGM 18.330  
2006....

**D 0836 LOH 40**  
**Euro 3 C.Rail**  
6 Sil. Dizel 6871cc  
206 Kw(280 Ps)  
Lion City, NL 283  
2002....



**Piston Ölçüleri**  
(Piston Dimensions)

A : 63.900  
B- : 17.390  
BØ : 65.000  
C1 : 1.700  
D : 103.000  
E : 15.000

Pim: 42 x 86



**Piston Özellikleri**  
(Piston Features)

Segman Taşıyıcı  
(Ring Carrier)  
Gözarası Konik  
(Conical Between Eyes)



**Piston Parça No**  
(Piston Part No)

87-874100-02  
87-71539-STD



**Segman Seti**  
(Ring Set)

06-874100-20-STD

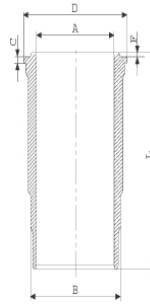
3.000 CK KV4  
2.500 F14  
3.000 CR KV1

Goetze® LKZ-Ring® /  
Yağ Segmanı Matkap Delikli  
(Oil Ring Drill Hole)



**Silindir Gömleği**  
(Liner)

14-029250-20-DH  
B : 111.500  
L : 217.000  
D : 115.850  
C : 4.000

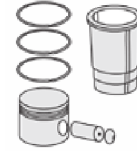


14-029251-20-DH  
B : 111.750  
L : 217.000  
D : 115.850  
C : 4.000

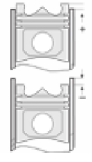
Dış Çap 0,25mm Farklı  
(Outer Diameter  
0,25 mm Different)

14-029252-20-DH  
B : 112.000  
L : 217.000  
D : 115.850  
C : 4.000

Dış Çap 0,50mm Farklı  
(Outer Diameter  
0,50 mm Different)



**Silindir Kit**  
(Assembly Set)



**Piston - Blok Montaj**  
**Yüksekliği**  
(Piston - Block  
Assembly Height)

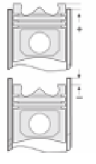
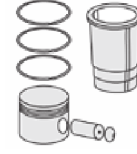
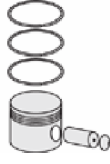
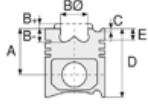
+0,10 /+0,40





MAN - Ø 108

87-71539-STD



**Motor Özellikleri**  
(Engine Specifications)

**Piston Ölçüleri**  
(Piston Dimensions)

**Piston Parça No**  
(Piston Part No)

**Segman Seti**  
(Ring Set)

**Silindir Gömleği**  
(Liner)

**Silindir Kit**  
(Assembly Set)

**Piston - Blok Montaj**  
Yüksekliği  
(Piston - Block  
Assembly Height)

D 0836 LOH  
41 Euro 3 C.Rail  
6 Sil. Dizel 6871cc  
176 Kw(239 Ps)  
NL243  
2002....

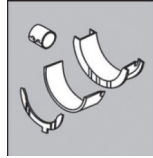
D 0836 LOH 50  
Euro 3 C.Rail  
6 Sil. Dizel 6871cc  
Sabit Motor (Fixed  
Engine)

**Ana Yatak**  
(Main Bearing)



H082/5 STD

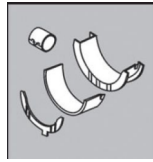
**Kol Yatak**  
(Connecting Rod Bearing)



71-3939 STD

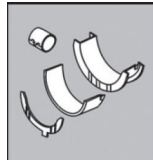
71-3938/6 STD

**Eksantrik Yatak**  
(Camshaft Bearing)



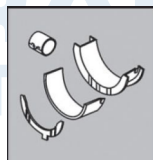
N150/5 STD

**Ay Yatak**  
(Thrust Washer)



A158/4 STD

**Kol Burcu**  
(Small End Bushing)



55-3946 SEMI





MAN - Ø 108

87-71541-STD A



**Motor Özellikleri**  
(Engine Specifications)

İmalatçı (Manufacturer):  
MAN  
Çap (Diameter): Ø 108  
FM Grup No: 5431

**D 0824 LFL09**  
**EURO 1**

4 Sil. Dizel 4580cc  
114 Kw (155 PS) 18:1  
Turbo Intercooler  
10.163, 12.163, 14.163,  
15.163, 8.160, 9.160  
1997 - 2002

**D 0826 LFL10**

6 Sil. Dizel 4580cc  
92-162 Kw (125-220 PS)  
18:1  
Turbo Intercooler  
16.220 FAEX ASKERİ  
KAMYON, 18.220  
FAX ASKERİ KAMYON,  
LE220 KAMYON  
2000....

**D 0824 Lf02,**

**LOHO5, Euro 2**  
4 Sil. Dizel 4580cc  
118 Kw(160 Ps) 16,5:1  
Turbo Intercooler  
12.163, 8.163  
1995....

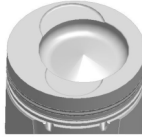
**D 0826 LUH11,**

**LUH12, LUH13,**  
**LOH18 Euro 2**  
6 Sil. Dizel 6871cc  
162 Kw(220 Ps) 18:1  
Turbo Intercooler  
8.224F  
1995....

**Piston Ölçüleri**  
(Piston Dimensions)

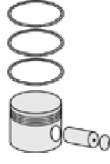
A : 72.800  
B- : 16.150  
BØ : 70.000  
BX : 6.000  
C1 : 1.710  
D : 113.000  
E : 20.000

Pim: 40 x 90



**Piston Özellikleri**  
(Piston Features)

Segman Taşıyıcı  
(Ring Carrier)  
Gözarası Konik  
(Conical Eye Gap)



**Piston Parça No**  
(Piston Part No)

87-285900-63  
87-71541-STD1A  
- 0,20 mm Kısa (Short)  
87-285900-62  
87-71541-STD A



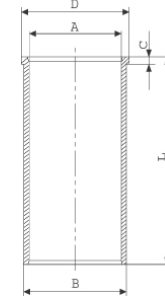
**Segman Seti**  
(Ring Set)

06-285900-20-STD  
3.000 CR IKA  
2.500 STD  
4.000 CR STD  
Goetze® LKZ-Ring®

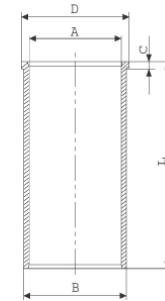


**Silindir Gömleği**  
(Liner)

14-021860-00-D  
B : 111.600  
L : 217.000  
D : 115.850  
C : 4.100



14-029250-20-DH  
B : 111.500  
L : 217.000  
D : 115.850  
C : 4.000

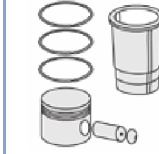


14-029251-20-DH  
B : 111.750  
L : 217.000  
D : 115.850  
C : 4.000

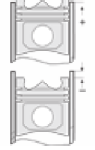
Dış Çap 0,25mm Farklı  
(Outer Diameter  
0,25 mm Different)

14-029252-20-DH  
B : 112.000  
L : 217.000  
D : 115.850  
C : 4.000

Dış Çap 0,50mm Farklı  
(Outer Diameter  
0,50 mm Different)



**Silindir Kit**  
(Assembly Set)



**Piston - Blok Montaj**  
**Yüksekliği**  
(Piston - Block  
Assembly Height)

+0,09/+0,39





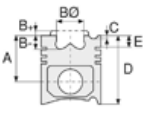


MAN - Ø 108

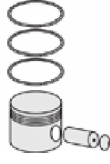
87-71541-STD A



**Motor Özellikleri**  
(Engine Specifications)



**Piston Ölçüleri**  
(Piston Dimensions)



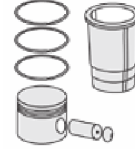
**Piston Parça No**  
(Piston Part No)



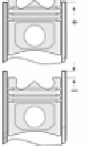
**Segman Seti**  
(Ring Set)



**Silindir Gömleği**  
(Liner)

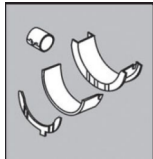


**Silindir Kit**  
(Assembly Set)



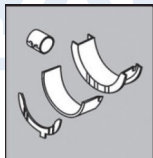
**Piston - Blok Montaj**  
**Yüksekliği**  
(Piston - Block  
Assembly Height)

**Ana Yatak**  
(Main Bearing)



H049/5 STD

**Kol Yatak**  
(Connecting Rod Bearing)



71-3660/4 STD





MAN - Ø 108

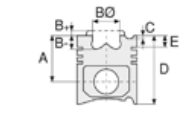
87-71553-STD



**Motor Özellikleri**  
(Engine Specifications)

İmalatçı (Manufacturer):  
MAN  
Çap (Diameter): Ø 108  
FM Grup No: 5406

D 0826 LFO1/O2  
6 Sil. Dizel 6871cc  
141/169 Kw  
(192/230 PS) 16,5:1  
12.232,12.192,  
14.232,14.192,  
17.232,17.192,  
18.232,18.192,  
24.232,24.192  
1988 - 1995



**Piston Ölçüleri**  
(Piston Dimensions)

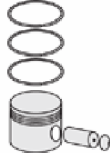
A : 73.000  
B - : 21.350  
BØ : 63.000  
BX : 6.000  
C1 : 1.700  
D : 113.000  
E : 20.000

Pim: 40 x 90



**Piston Özellikleri**  
(Piston Features)

Segman Taşıyıcı  
(Ring Carrier)  
Sert Anotlama  
(Hard Anodizing)  
Yağ Püskürtme Oyuğu  
(Oil Jet Cut-out)  
Gözarası Konik  
(Conical Eye Gap)



**Piston Parça No**  
(Piston Part No)

87-285900-22  
87-71553-STD  
87-285900-23  
87-71553-STD1A  
0,20 mm Kısa (Short)  
87-285900-24  
87-71553-STD2A  
0,40 mm Kısa (Short)  
87-285900-33  
87-71553-STD3A  
0,60 mm Kısa (Short)



**Segman Seti**  
(Ring Set)

06-285900-20-STD  
3.000 CR IKA  
2.500 STD  
4.000 CR STD  
Goetze® LKZ-Ring®

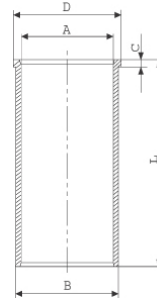


**Silindir Gömleği**  
(Liner)

14-021860-00-D  
B : 111.600  
L : 217.000  
D : 115.850  
C : 4.100



14-029250-20-DH  
B : 111.500  
L : 217.000  
D : 115.850  
C : 4.000

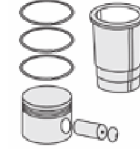


14-029251-20-DH  
B : 111.750  
L : 217.000  
D : 115.850  
C : 4.000

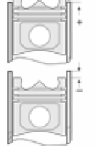
Dış Çap 0,25mm Farklı  
(Outer Diameter  
0,25 mm Different)

14-029252-20-DH  
B : 112.000  
L : 217.000  
D : 115.850  
C : 4.000

Dış Çap 0,50mm Farklı  
(Outer Diameter  
0,50 mm Different)



**Silindir Kit**  
(Assembly Set)



**Piston - Blok Montaj**  
Yüksekliği  
(Piston - Block  
Assembly Height)

+ 0,15 / +0,32



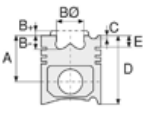


MAN - Ø 108

87-71553-STD



**Motor Özellikleri**  
(Engine Specifications)



**Piston Ölçüleri**  
(Piston Dimensions)



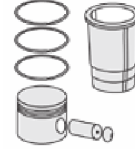
**Piston Parça No**  
(Piston Part No)



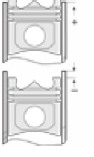
**Segman Seti**  
(Ring Set)



**Silindir Gömleği**  
(Liner)

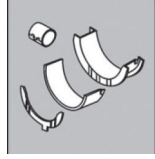


**Silindir Kit**  
(Assembly Set)



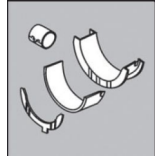
**Piston - Blok Montaj**  
**Yüksekliği**  
(Piston - Block  
Assembly Height)

**Ana Yatak**  
(Main Bearing)



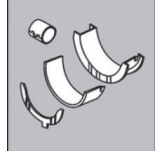
H049/7 STD

**Kol Yatak**  
(Connecting Rod Bearing)



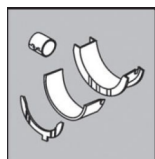
71-3660/6 STD

**Kol Burcu**  
(Small End Bushing)



55-3486 SEMI

**Eksantrik Yatak**  
(Camshaft Bearing)



N125/4 STD

**Sil. Kapak. Conta**  
(Cylinder Head Gasket)



30-026468-00

BV500



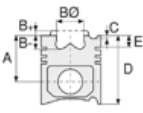


MAN - Ø 108

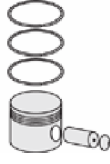
87-71553-STD



**Motor Özellikleri**  
(Engine Specifications)



**Piston Ölçüleri**  
(Piston Dimensions)



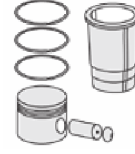
**Piston Parça No**  
(Piston Part No)



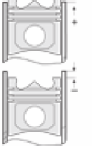
**Segman Seti**  
(Ring Set)



**Silindir Gömleği**  
(Liner)



**Silindir Kit**  
(Assembly Set)



**Piston - Blok Montaj**  
**Yüksekliği**  
(Piston - Block  
Assembly Height)

**Üst Bölüm Takım Conta**  
(Upper Part Kit Gasket)



21-26468-22/0

**Alt Bölüm Takım Conta**  
(Lower Section Kit Gasket)



22-25060-00/0

**Full Takım Conta**  
(Full Set Gasket)



20-26468-04/0





MAN - Ø 108

87-71582-STD A



**Motor Özellikleri**  
(Engine Specifications)

İmalatçı (Manufacturer):  
MAN  
Çap (Diameter): Ø 108  
FM Grup No: 5441

**DO836 LFO2 Euro II**  
6 Sil. Dizel 6871cc  
270 HP  
Perkins ile ortak  
motor ( Common  
Engine With Perkins)  
/ HI-EX  
32.270 FVN  
2003....

**Piston Ölçüleri**  
(Piston Dimensions)

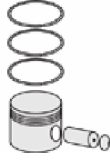
A : 63.900  
B- : 16.150  
BØ : 70.520  
BX : 6.000  
C1 : 1.700  
D : 103.000  
E : 15.000

Pim: 42 x 86



**Piston Özellikleri**  
(Piston Features)

Segman Taşıyıcı  
(Ring Carrier)  
Gözarası Konik  
(Conical Eye Gap)



**Piston Parça No**  
(Piston Part No)

87-873900-13  
87-71582-STD1A  
0,20 mm Kısa (Short)  
  
87-873900-14  
87-71582-STD2A  
0,40 mm Kısa (Short)  
  
87-873900-12  
87-71582-STD A



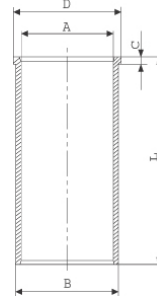
**Segman Seti**  
(Ring Set)

06-873900-20-STD  
3.000 CK IKA  
2.500 STD  
3.000 CR GOE  
  
Goetze® LKZ-Ring® /  
Yağ segmanı matkap  
delikli (oil ring drill  
perforated)

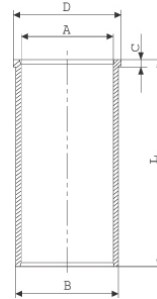


**Silindir Gömleği**  
(Liner)

14-021860-00-D  
B : 111.600  
L : 217.000  
D : 115.850  
C : 4.100



14-029250-20-DH  
B : 111.500  
L : 217.000  
D : 115.850  
C : 4.000

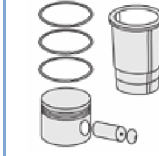


14-029251-20-DH  
B : 111.750  
L : 217.000  
D : 115.850  
C : 4.000

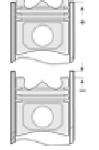
Dış Çap 0,25mm Farklı  
(Outer Diameter  
0,25 mm Different)

14-029252-20-DH  
B : 112.000  
L : 217.000  
D : 115.850  
C : 4.000

Dış Çap 0,50mm Farklı  
(Outer Diameter  
0,50 mm Different)



**Silindir Kit**  
(Assembly Set)



**Piston - Blok Montaj**  
Yüksekliği  
(Piston - Block  
Assembly Height)

0/+0,32



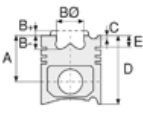


MAN - Ø 108

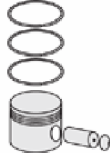
87-71582-STD A



**Motor Özellikleri**  
(Engine Specifications)



**Piston Ölçüleri**  
(Piston Dimensions)



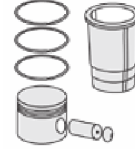
**Piston Parça No**  
(Piston Part No)



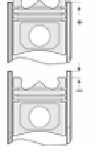
**Segman Seti**  
(Ring Set)



**Silindir Gömleği**  
(Liner)



**Silindir Kit**  
(Assembly Set)



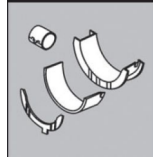
**Piston - Blok Montaj**  
**Yüksekliği**  
(Piston - Block  
Assembly Height)

**ANA YATAK**  
(MAIN BEARING)



H082/7 STD

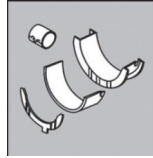
**KOL YATAK**  
(ARM BED)



71-3939 STD

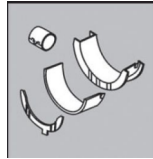
71-3938/6 STD

**EKSANTRİK YATAK**  
(ECCENTRIC BEARING)



N150/7 STD

**AY YATAK**  
(THRUST WASHER)



A158/4 STD

**SİL. KAPAK. CONTA**  
(CYLINDER HEAD GASKET)



30-026468-00

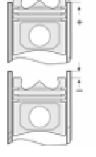
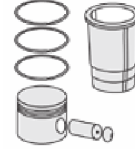
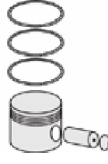
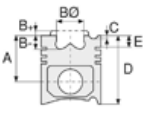
BV500





MAN - Ø 108

87-72980-STD



**Motor Özellikleri**  
(Engine Specifications)

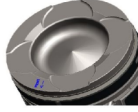
İmalatçı (Manufacturer):  
MAN  
Çap (Diameter): Ø 108  
FM Grup No: 54004

**DO834LFL50-55/57**  
**EURO 4 C.RAIL**  
4 Sil. Dizel 4580cc  
132 KW (180 BG)  
TGL 12.180 4X2  
2009...

**Piston Ölçüleri**  
(Piston Dimensions)

A : 63.900  
B- : 17.390  
BØ : 65.130  
C1 : 1.700  
D : 103.000  
E : 9.000

Pim: 44 x 88





**Piston Özellikleri**  
(Piston Features)

Segman Taşıyıcı  
(Ring Carrier)  
Soğutma Kanallı  
(Coolin Gallery)  
Gözarası Konik  
(Conical Eye Gap)

**Piston Parça No**  
(Piston Part No)

87-874100-22  
87-72980-STD  
87-874100-23  
87-72980-STD1  
0,20 mm Kısa (Short)

**Segman Seti**  
(Ring Set)

06-874100-20-STD  
3.000  CK KV4  
2.500  F14  
3.000  CR KV1  
Goetze® LKZ-Ring® /  
Yağ Segmanı Matkap  
Delikli (Oil Ring Drill  
Perforated)

**Silindir Gömleği**  
(Liner)

**Silindir Kit**  
(Assembly Set)

**Piston - Blok Montaj**  
Yüksekliği  
(Piston - Block  
Assembly Height)



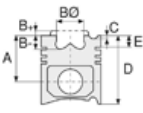


MAN - Ø 108

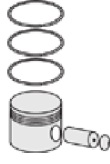
87-72980-STD



**Motor Özellikleri**  
(Engine Specifications)



**Piston Ölçüleri**  
(Piston Dimensions)



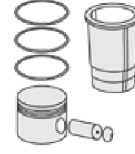
**Piston Parça No**  
(Piston Part No)



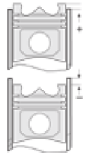
**Segman Seti**  
(Ring Set)



**Silindir Gömleği**  
(Liner)

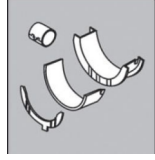


**Silindir Kit**  
(Assembly Set)



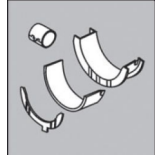
**Piston - Blok Montaj**  
**Yüksekliği**  
(Piston - Block  
Assembly Height)

**Eksantrik Yatak**  
(Camshaft Bearing)



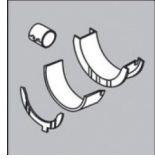
N 1505 SEMI STD

**Ana Yatak**  
(Main Bearing)



72-4749 STD

**Kol Yatak**  
(Connecting Rod Bearing)



71-4748 STD

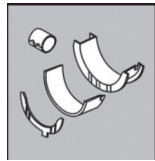
**Ay Yatak**  
(Thrust Washer)



A290/4 STD

A 1584 STD

**Kol Burcu**  
(Small End Bushing)



55-4752 SEMI

**Sil. Kapak. Conta**  
(Cylinder Head Gasket)



30-026468-00

BV500







MAN - Ø 108

87-72981-STD



**Motor Özellikleri**  
(Engine Specifications)

İmalatçı (Manufacturer):  
MAN  
Çap (Diameter): Ø 108  
FM Grup No: 54009

**E836 LOH01**  
**CNG ENGINE**  
6 Sil. CNG  
206KW-280 HP  
GÜLERYÜZ COBRA  
GD 272 LF,  
GÜLERYÜZ GM  
290 LF CNG,  
TCV OTOBUS



**Piston Ölçüleri**  
(Piston Dimensions)

A : 58.000  
B - : 10.180  
BØ : 92.070  
D : 97.100  
E : 9.350

Pim: 44 x 88



**Piston Özellikleri**  
(Piston Features)

Segman Taşıyıcı  
(Ring Carrier)  
Gözarası Konik  
(Conical Eye Gap)



**Piston Parça No**  
(Piston Part No)

87-818000-02  
87-72981-STD



**Segman Seti**  
(Ring Set)

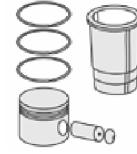
06-818000-00-STD

2.500 CKS KV4  
2.500 CR GOE  
3.000 CR KV1

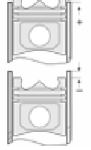
Yağ Segmanı Matkap  
Delikli (Oil Ring Drill  
Perforated)



**Silindir Gömleği**  
(Liner)

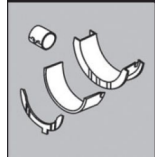


**Silindir Kit**  
(Assembly Set)



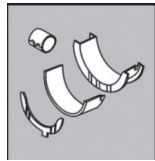
**Piston - Blok Montaj**  
Yüksekliği  
(Piston - Block  
Assembly Height)

**ANA YATAK**  
(MAIN BEARING)



H082/7 STD

**KOL YATAK**  
(ARM BED)



71-3939 STD

**SİL. KAPAK. CONTA**  
(CYLINDER HEAD GASKET)



21-26468-22/0





MAN - Ø 112

06-285500-20-STD



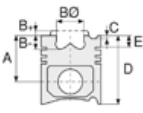
**Motor Özellikleri**  
(Engine Specifications)

İmalatçı (Manufacturer):  
MAN

Çap (Diameter): Ø 112  
FM Grup No: 5442

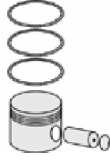
**D 1246**  
6 Sil. Dizel  
96Kw (130 PS) 23:1  
1953 - 1976

**MV3A**  
6 Sil. Dizel 6871cc  
1953 - 1976



**Piston Ölçüleri**  
(Piston Dimensions)

**Piston Özellikleri**  
(Piston Features)



**Piston Parça No**  
(Piston Part No)



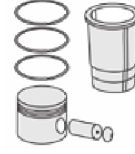
**Segman Seti**  
(Ring Set)

06-285500-20-STD  
06-285505-20 0,25 mm

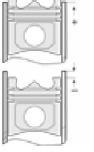
2.500 CR IKA  
2.500 STD  
2.500 STD  
5.000 STD



**Silindir Gömleği**  
(Liner)



**Silindir Kit**  
(Assembly Set)



**Piston - Blok Montaj**  
Yüksekliği  
(Piston - Block  
Assembly Height)





MAN - Ø 120

87-71532-STD



**Motor Özellikleri**  
(Engine Specifications)

İmalatçı (Manufacturer):  
MAN  
Çap (Diameter): Ø 120  
FM Grup No: 54008

**D 2066 LF25 EURO 5**  
6 Sil. Dizel 10518cc  
324 KW (440 PS)  
18.440 TGX EURO 5,  
41.400 TGA Euro 5  
2012....

**Piston Ölçüleri**  
(Piston Dimensions)

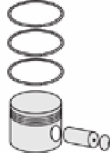
A : 76.800  
B- : 19.700  
BØ : 68.767  
C1 : 1.600  
C2 : 2.000  
D : 123.300  
E : 10.000

Pim: 52 x 96



**Piston Özellikleri**  
(Piston Features)

Segman Taşıyıcı  
(Ring Carrier)  
Soğutma Kanallı  
(Coolin Gallery)  
Gözarası Konik  
(Conical Eye Gap)



**Piston Parça No**  
(Piston Part No)

87-859700-22  
87-71532-STD



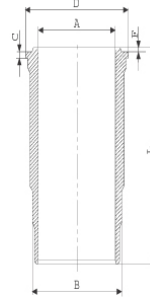
**Segman Seti**  
(Ring Set)

06-859700-20-STD  
3.500 PVD ST  
3.000 CR F14  
4.000 CR STD

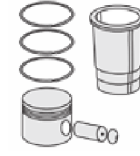


**Silindir Gömleği**  
(Liner)

14-451550-00-WH  
B : 139.500  
L : 260.000  
D : 150.000  
C : 8.070

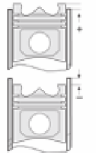


Kurum Giderme Ringli  
(With Soot Removal Ring)  
24-35043-60/O  
2X139,5\*3,95\*4,70 FPM



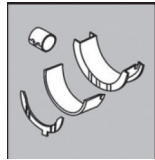
**Silindir Kit**  
(Assembly Set)

89-859700-22-STD  
89-71532-STD



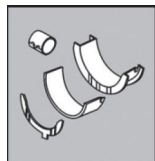
**Piston - Blok Montaj**  
Yüksekliği  
(Piston - Block  
Assembly Height)

**Ana Yatak**  
(Main Bearing)



H1239/7 STD

**Kol Yatak**  
(Connecting Rod Bearing)



71-4529 STD/ 71-4746 STD

**Sil. Kapak. Conta**  
(Cylinder Head Gasket)



30-030576-00





MAN - Ø 120

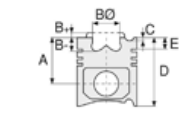
87-71533-STD



**Motor Özellikleri**  
(Engine Specifications)

İmalatçı (Manufacturer):  
MAN  
Çap (Diameter): Ø 120  
FM Grup No: 54002

**D2066 LF25 Euro 5**  
6 Sil. Dizel 10518cc  
324 Kw ( 440 PS)  
TGA 18,440, TGA 24,  
430, TGA 24,440,  
TGX 18,440,  
TGX 18.430  
2007 - 2012



**Piston Ölçüleri**  
(Piston Dimensions)

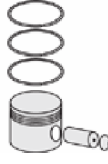
A : 76.800  
B - : 19.700  
BØ : 68.767  
C1 : 1.600  
C2 : 2.000  
D : 123.300  
E : 10.000

Pim: 52 x 96



**Piston Özellikleri**  
(Piston Features)

Segman Taşıyıcı  
(Ring Carrier)  
Soğutma Kanallı  
(Coolin Gallery)  
Gözarası Konik  
(Conical Eye Gap)



**Piston Parça No**  
(Piston Part No)

87-859700-02  
87-71533-STD



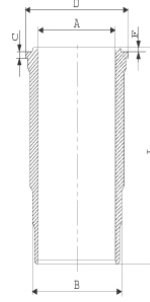
**Segman Seti**  
(Ring Set)

06-859700-20-STD  
3.500 PVD ST  
3.000 CR F14  
4.000 CR STD



**Silindir Gömleği**  
(Liner)

14-450630-00-WH  
B : 139.500  
L : 260.000  
D : 150.000  
C : 8.070



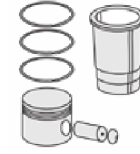
Dış Yüzeyi Fosfat Kaplı /  
O-RING Bilgi  
(Outer Surface  
Phosphate Coated /  
O-RING Information)  
24-35043-60/O  
2x 139,5\*3,95\*4,70 FPM

14-450631-00-WH  
B : 139.500  
L : 260.000  
D : 150.000  
C : 8.570

Flanş ve Boğaz  
Alt Çapı 0,50mm Farklı  
(Flange and Throat  
Bottom Diameter  
0,50mm Different)

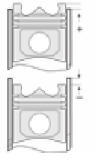
14-450632-00-WH  
B : 139.500  
L : 260.000  
D : 150.000  
C : 9.070

Flanş ve Boğaz Alt  
Çapı 1,00mm Farklı  
(Flange and Throat  
Bottom Diameter  
1,00 mm Different)



**Silindir Kit**  
(Assembly Set)

89-859700-02STD  
89-71533-STD



**Piston - Blok Montaj**  
Yüksekliği  
(Piston - Block  
Assembly Height)



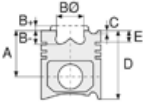


MAN - Ø 120

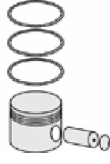
87-71533-STD



**Motor Özellikleri**  
(Engine Specifications)



**Piston Ölçüleri**  
(Piston Dimensions)



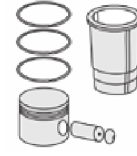
**Piston Parça No**  
(Piston Part No)



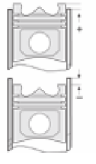
**Segman Seti**  
(Ring Set)



**Silindir Gömleği**  
(Liner)

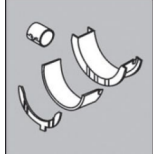


**Silindir Kit**  
(Assembly Set)



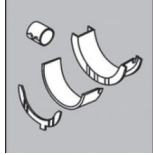
**Piston - Blok Montaj**  
**Yüksekliği**  
(Piston - Block  
Assembly Height)

**Eksantrik Yatak**  
(Eccentric Bearing)



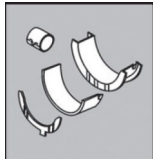
034727 STD

**Ana Yatak**  
(Main Bearing)



H1239/7 STD

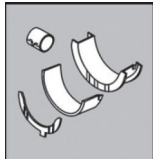
**Kol Yatak**  
(Arm Bed)



71-4746 STD

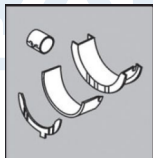
71-4529 STD

**Ay Yatak**  
(Thrust Washer)



A159/4 STD

**Kol Burcu**  
(Small End Bush)



55-4532 SEMI





MAN - Ø 120

87-71534-STD



**Motor Özellikleri**  
(Engine Specifications)

İmalatçı (Manufacturer):  
MAN  
Çap (Diameter): Ø 120  
FM Grup No: 5493

**D 2066LF37-38-39**  
**EURO 5**  
6 Sil. Dizel 10518cc  
320 BG  
TGS 26.320  
2007...

**Piston Ölçüleri**  
(Piston Dimensions)

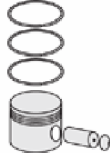
A : 76.800  
B- : 19.700  
BØ : 67.000  
C1 : 1.600  
C2 : 2.000  
D : 123.300  
E : 10.000

Pim: 52 x 96



**Piston Özellikleri**  
(Piston Features)

Segman Taşıyıcı  
(Ring Carrier)  
Soğutma Kanallı  
(Coolin Gallery)  
Gözarası Konik  
(Conical Eye Gap)



**Piston Parça No**  
(Piston Part No)

87-874000-22  
87-71534-STD



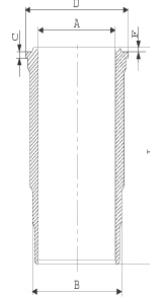
**Segman Seti**  
(Ring Set)

06-874000-20-STD  
3.500 CR KV4  
3.000 CR GOE  
4.000 CR GOE  
Goetze® LKZ-Ring® /  
Yağ Segmanı Matkap  
Delik (Oil Ring Drill Hole)



**Silindir Gömleği**  
(Liner)

14-450630-00-WH  
B : 139.500  
L : 260.000  
D : 150.000  
C : 8.070



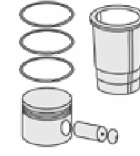
Dış Yüzeyi Fosfat Kaplı /  
O-RING Bilgi  
(Outer Surface  
Phosphate Coated /  
O-RING Information)  
24-35043-60/O  
2x 139,5\*3,95\*4,70 FPM

14-450631-00-WH  
B : 139.500  
L : 260.000  
D : 150.000  
C : 8.570

Flanş ve Boğaz  
Alt Çapı 0,50mm Farklı  
(Flange and Throat  
Bottom Diameter  
0,50mm Different)

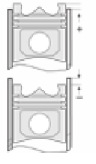
14-450632-00-WH  
B : 139.500  
L : 260.000  
D : 150.000  
C : 9.070

Flanş ve Boğaz Alt  
Çapı 1,00mm Farklı  
(Flange and Throat  
Bottom Diameter  
1,00 mm Different)



**Silindir Kit**  
(Assembly Set)

89-874000-22-STD  
89-71534-STD



**Piston - Blok Montaj**  
**Yüksekliği**  
(Piston - Block  
Assembly Height)



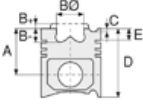


MAN - Ø 120

87-71534-STD



**Motor Özellikleri**  
(Engine Specifications)



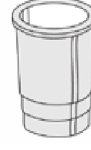
**Piston Ölçüleri**  
(Piston Dimensions)



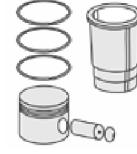
**Piston Parça No**  
(Piston Part No)



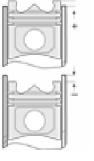
**Segman Seti**  
(Ring Set)



**Silindir Gömleği**  
(Liner)

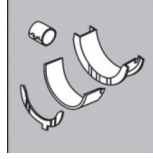


**Silindir Kit**  
(Assembly Set)



**Piston - Blok Montaj**  
**Yüksekliği**  
(Piston - Block  
Assembly Height)

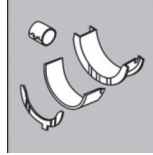
**Eksantrik Yatak**  
(Camshaft Bearing)



H1239/7 STD

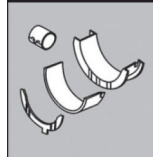
034727 STD

**Ana Yatak**  
(Main Bearing)



H1239/7 STD

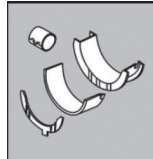
**Kol Yatak**  
(Connecting Rod Bearing)



71-4529 STD

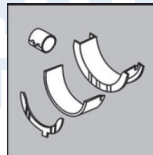
71-4746 STD

**Ay Yatak**  
(Thrust Washer)



A159/4 STD

**Kol Burcu**  
(Small End Bushing)



55-4532 SEMI





MAN - Ø 120

87-71583-STD A



**Motor Özellikleri**  
(Engine Specifications)

İmalatçı (Manufacturer):  
MAN  
Çap (Diameter): Ø 120  
FM Grup No: 5445

**D 2066LFO1 EURO**  
**3 C. RAIL**

6 Sil. Dizel 10518cc  
307 KW (430 PS)  
16 Valve  
TGA18.430,  
TGA33.430,  
TGA41.430  
2006....

**D 2066LFO2 EURO**  
**3 C. RAIL**

6 Sil. Dizel 10518cc  
279 KW (390 PS)  
16 Valve  
TGA18.390,  
TGA39.390  
2006....

**D 2066LFO6 EURO**  
**3 C. RAIL**

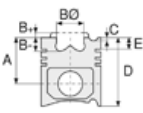
6 Sil. Dizel 10518cc  
286 KW (400 PS)  
16 Valve  
TGA19.400,  
TGA41.400  
2006....

**D 2066LFO7 EURO**  
**3 C. RAIL**

6 Sil. Dizel 10518cc  
265 KW (360 PS)  
16 Valve  
TGA18.390,  
TGA39.390  
2006....

**D 2066LFO3/04/11/**  
**12/13/14/21/22/31-35**

6 Sil. Dizel 10518cc  
265 KW (360 PS)  
16 Valve  
2006....



**Piston Ölçüleri**  
(Piston Dimensions)

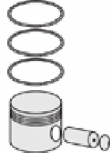
A : 76.800  
B - : 20.000  
BØ : 70.000  
C1 : 2.000  
C2 : 1.600  
D : 123.300  
E : 10.000

Pim: 52 x 96



**Piston Özellikleri**  
(Piston Features)

Segman Taşıyıcı  
(Ring Carrier)  
Soğutma Kanallı  
(Coolin Gallery)  
Gözarası Konik  
(Conical Eye Gap)



**Piston Parça No**  
(Piston Part No)

87-874000-12  
87-71583-STD A



**Segman Seti**  
(Ring Set)

06-874000-20-STD

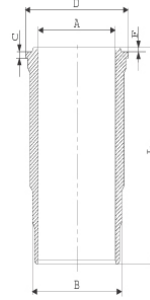
3.500 CR KV4  
3.000 CR GOE  
4.000 CR GOE

Goetze® LKZ-Ring® /  
Yağ Segmanı Matkap  
Delik (Oil Ring Drill Hole)

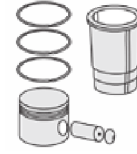


**Silindir Gömleği**  
(Liner)

14-450630-00-WH  
B : 139.500  
L : 260.000  
D : 150.000  
C : 8.070

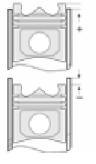


Dış Yüzeyi Fosfat Kaplı /  
O-RING Bilgi  
(Outer Surface  
Phosphate Coated /  
O-RING Information)  
24-35043-60/O  
2x 139,5\*3,95\*4,70 FPM



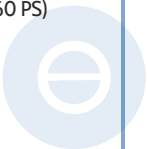
**Silindir Kit**  
(Assembly Set)

89-874000-12-STD  
89-71583-STD A



**Piston - Blok Montaj**  
**Yüksekliği**  
(Piston - Block  
Assembly Height)

+0,20 /+0,30





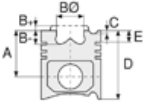


MAN - Ø 120

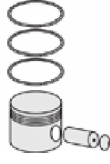
87-71583-STD A



**Motor Özellikleri**  
(Engine Specifications)



**Piston Ölçüleri**  
(Piston Dimensions)



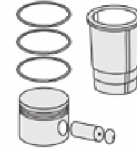
**Piston Parça No**  
(Piston Part No)



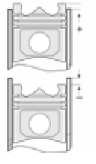
**Segman Seti**  
(Ring Set)



**Silindir Gömleği**  
(Liner)



**Silindir Kit**  
(Assembly Set)



**Piston - Blok Montaj**  
**Yüksekliği**  
(Piston - Block  
Assembly Height)

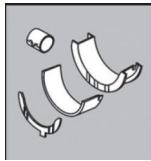
**ANA YATAK**  
(MAIN BEARING)



H1239/7 STD

H1080/5 STD

**KOL YATAK**  
(ARM BED)

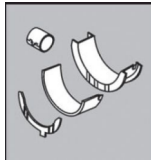


71-4529 STD

71-4746 STD

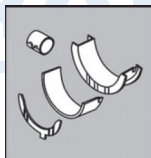
01-4202/4 STD

**AY YATAK**  
(THRUST WASHER)



A159/4 STD

**KOL BURCU**  
(SMALL END BUSH)



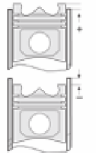
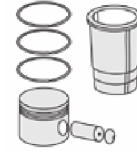
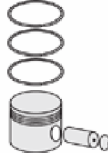
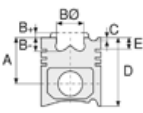
55-4532 SEMI





MAN - Ø 120

87-72953-STD



**Motor Özellikleri**  
(Engine Specifications)

İmalatçı (Manufacturer):  
MAN  
Çap (Diameter): Ø 120  
FM Grup No: 5505

**D 2066LF 03 EURO 3**  
6 Sil. Dizel 10520cc  
316 KW-430 PS  
TGA 18.350, TGA 18.390,  
TGA 24.430, TGA 26.350,  
TGA18.430

**Piston Ölçüleri**  
(Piston Dimensions)

A : 76.800  
B - : 20.000  
BØ : 70.000  
C1 : 1.500  
C2 : 2.000  
D : 121.800  
E : 10.000

Pim: 52 x 96



**Piston Özellikleri**  
(Piston Features)

Segman Taşıyıcı  
(Ring Carrier)  
Soğutma Kanallı  
(Coolin Gallery)  
Yağ Püskürtme Oyuğu  
(Oil Jet Cut-out)  
Gözarası Konik  
(Conical Eye Gap)

**Piston Parça No**  
(Piston Part No)

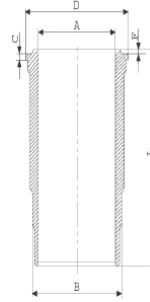
87-874000-42  
87-72953-STD

**Segman Seti**  
(Ring Set)

06-874000-20-STD  
3.500 CR KV4  
3.000 CR GOE  
4.000 CR GOE  
Goetze® LKZ-Ring® /  
Yağ Segmanı Matkap  
Delik (Oil Ring Drill Hole)

**Silindir Gömleği**  
(Liner)

14-450630-00-WH  
B : 139.500  
L : 260.000  
D : 150.000  
C : 8.070



Dış Yüzeyi Fosfat Kaplı /  
O-RING Bilgi  
(Outer Surface  
Phosphate Coated /  
O-RING Information)  
24-35043-60/O  
2x 139,5\*3,95\*4,70 FPM

**Silindir Kit**  
(Assembly Set)

89-874000-42-STD  
89-72953-STD

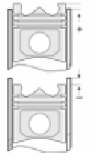
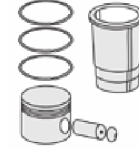
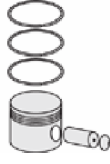
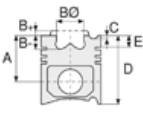
**Piston - Blok Montaj**  
Yüksekliği  
(Piston - Block  
Assembly Height)





MAN - Ø 120

87-72954-STD



**Motor Özellikleri**  
(Engine Specifications)

İmalatçı (Manufacturer):  
MAN  
Çap (Diameter): Ø 120  
FM Grup No: 5507

**D2066 LOH O2**  
6 Sil. Dizel 10520cc  
165KW-360 PS  
18.360  
2006....

**Piston Ölçüleri**  
(Piston Dimensions)

A : 76.800  
B- : 22.454  
BØ : 68.000  
C1 : 1.600  
C2 : 2.000  
D : 123.300  
E : 10.000

Pim: 52 x 96



**Piston Özellikleri**  
(Piston Features)

Segman Taşıyıcı  
(Ring Carrier)  
Soğutma Kanallı  
(Coolin Gallery)  
Burçlu Piston  
(Bushing Piston)

**Piston Parça No**  
(Piston Part No)

87-865000-02  
87-72954-STD

**Segman Seti**  
(Ring Set)

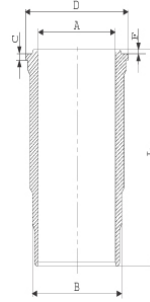
06-865000-00-STD

3.500 PVD ST  
2.500 NT ST  
3.500 NT ST

**Silindir Gömleği**  
(Liner)

14-451550-00-WH

B : 139.500  
L : 260.000  
D : 150.000  
C : 8.070

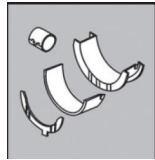


Kurum Giderme Ringli  
(With Soot Removal Ring)  
24-35043-60/O  
2X139,5\*3,95\*4,70 FPM

**Silindir Kit**  
(Assembly Set)

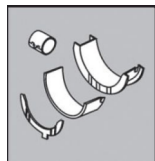
**Piston - Blok Montaj**  
Yüksekliği  
(Piston - Block  
Assembly Height)

**Ana Yatak**  
(Main Bearing)



H1239/7 STD

**Kol Yatak**  
(Connecting Rod Bearing)



71-4529 STD/ 71-4746 STD

**Sil. Kapak. Conta**  
(Cylinder Head Gasket)



30-030576-00





MAN - Ø 120

87-72955-STD



**Motor Özellikleri**  
(Engine Specifications)

İmalatçı (Manufacturer):  
MAN  
Çap (Diameter): Ø 120  
FM Grup No: 59012

**D2066LF EURO 6**  
6 Sil. Dizel 10518cc  
265kW-360PS  
TGS Serisi  
2014....

**Piston Ölçüleri**  
(Piston Dimensions)

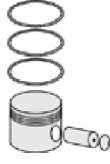
A : 76.800  
B - : 22.460  
BØ : 66.000  
C1 : 2.000  
C2 : 1.600  
D : 123.300  
E : 12.000

Pim: 52 x 96



**Piston Özellikleri**  
(Piston Features)

Segman Taşıyıcı  
(Ring Carrier)  
Soğutma Kanallı  
(Coolin Gallery)  
Burçlu Piston  
(Bushing Piston)  
Gözarası Konik  
(Conical Eye Gap)



**Piston Parça No**  
(Piston Part No)

87-818100-02  
87-72955-STD



**Segman Seti**  
(Ring Set)

06-818100-00-STD

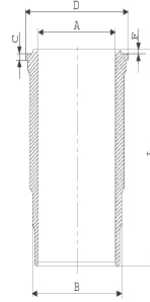
3.500 PVD ST  
2.500 NT ST  
3.500 NT ST



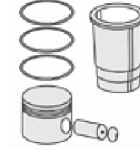
**Silindir Gömleği**  
(Liner)

14-451720-00-WH

B : 139.500  
L : 260.000  
D : 150.000  
C : 8.070

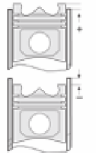


Kurum Giderme Ringli  
(With Soot Removal Ring)  
24-35054-00/0  
2X147, 50x139,  
50x4,75 FKM



**Silindir Kit**  
(Assembly Set)

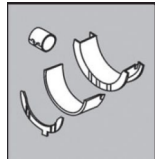
89-818100-02-STD  
89-72955-STD



**Piston - Blok Montaj**  
Yüksekliği  
(Piston - Block  
Assembly Height)

**Ana Yatak**

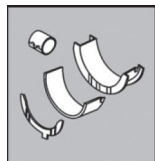
(Main Bearing)



H1239/7 STD

**Kol Yatak**

(Connecting Rod Bearing)



71-4529 STD/ 71-4746 STD

**Sil. Kapak. Conta**

(Cylinder Head Gasket)



30-026235-40





MAN - Ø 121

87-71563-STD



**Motor Özellikleri**  
(Engine Specifications)

İmalatçı (Manufacturer):  
MAN  
Çap (Diameter): Ø 121  
FM Grup No: 5414

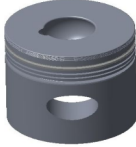
**D 2146 HM11/M9**

6 Sil. Dizel 9659cc  
158 Kw (212 PS) 17:1  
0145 SERİSİ  
KAMYONLAR,  
10.210, 10.212,  
1070, 1080,  
1580, 2180,  
770, 78  
1966 - 1975

**Piston Ölçüleri**  
(Piston Dimensions)

A : 98.940  
B - : 48.600  
BØ : 46.000  
D : 171.940  
E : 20.000

Pim: 48 x 100



**Piston Özellikleri**  
(Piston Features)

Segman Taşıyıcı  
(Ring Carrier)  
Sert Anotlama  
(Hard Anodizing)  
Gözarası Düz  
(Flat Eye Gap)

**Piston Parça No**  
(Piston Part No)

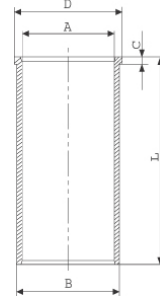
87-274800-02  
87-71563-STD

**Segman Seti**  
(Ring Set)

06-274800-20-STD  
3.500 CR IKA  
3.000 STD  
3.000 STD  
5.500 CR STD

**Silindir Gömleği**  
(Liner)

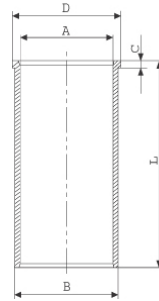
14-020560-00-D  
B : 126.100  
L : 287.000  
D : 132.000  
C : 8.200



14-020561-00-D  
B : 126.600  
L : 287.000  
D : 132.000  
C : 8.200

Dış çap 0,50 mm Farklı  
(Outer Diameter  
0,50 mm Different)

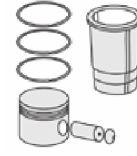
14-022830-00-DH  
B : 125.990  
L : 287.000  
D : 132.000  
C : 8.000



14-022831-00-DH  
B : 126.490  
L : 287.000  
D : 132.000  
C : 8.000

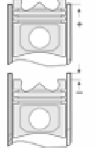
Dış çap 0,50 mm farklı  
(Outer Diameter  
0,50 mm Different)

**Silindir Kit**  
(Assembly Set)



**Piston - Blok Montaj**  
Yüksekliği  
(Piston - Block  
Assembly Height)

+ 0,05 / + 0,35



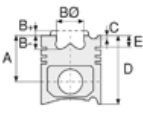


MAN - Ø 121

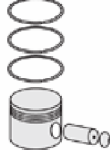
87-71563-STD



**Motor Özellikleri**  
(Engine Specifications)



**Piston Ölçüleri**  
(Piston Dimensions)



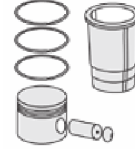
**Piston Parça No**  
(Piston Part No)



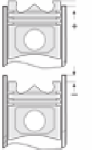
**Segman Seti**  
(Ring Set)



**Silindir Gömleği**  
(Liner)

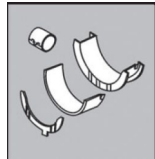


**Silindir Kit**  
(Assembly Set)



**Piston - Blok Montaj**  
**Yüksekliği**  
(Piston - Block  
Assembly Height)

**Kol Yatak**  
(Connecting Rod Bearing)



71-3004 STD

**Sil. Kapak. Conta**  
(Cylinder Head Gasket)



DG071





MAN - Ø 121

87-71564-STD



**Motor Özellikleri**  
(Engine Specifications)

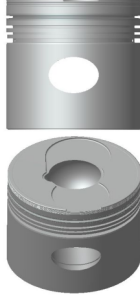
İmalatçı (Manufacturer):  
MAN  
Çap (Diameter): Ø 121  
FM Grup No: 5413

**D 2156 MT/MTN/MTX**  
6 Sil. Dizel 10344cc  
187/210 Kw  
(255-285 PS) 17:1  
Turbocharged / Saviem  
ile ortak motor  
(Common Engine With  
Turbocharged / Saviem)  
13.256 F, 16.256 F,  
19.256 F, 22.256 F,  
26.256 F, 30.256 F  
1966 - 1971

**Piston Ölçüleri**  
(Piston Dimensions)

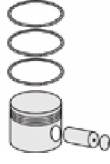
A : 94.000  
B- : 48.350  
BØ : 47.200  
C1 : 2.400  
D : 162.000  
E : 20.000

Pim: 45 x 102



**Piston Özellikleri**  
(Piston Features)

Segman Taşıyıcı  
(Ring Carrier)  
Sert Anotlama  
(Hard Anodizing)  
Gözarası Düz  
(Flat Eye Gap)



**Piston Parça No**  
(Piston Part No)

87-274800-22  
87-71564-STD  
87-274800-23  
87-71564-STD1  
0,20 mm Kısa (Short)  
87-274800-24  
87-71564-STD2  
0,40 mm Kısa (Short)



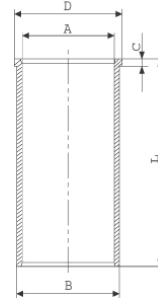
**Segman Seti**  
(Ring Set)

06-274800-20-STD  
3.500 CR IKA  
3.000 STD  
3.000 STD  
5.500 CR STD



**Silindir Gömleği**  
(Liner)

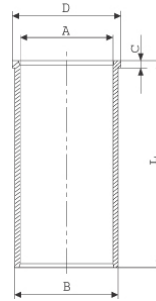
14-020560-00-D  
B : 126.100  
L : 287.000  
D : 132.000  
C : 8.200



14-020561-00-D  
B : 126.600  
L : 287.000  
D : 132.000  
C : 8.200

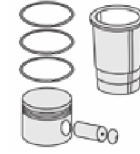
Dış çap 0,50 mm Farklı  
(Outer Diameter  
0,50 mm Different)

14-022830-00-DH  
B : 125.990  
L : 287.000  
D : 132.000  
C : 8.000

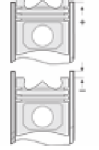


14-022831-00-DH  
B : 126.490  
L : 287.000  
D : 132.000  
C : 8.000

Dış çap 0,50 mm farklı  
(Outer Diameter  
0,50 mm Different)



**Silindir Kit**  
(Assembly Set)



**Piston - Blok Montaj**  
Yüksekliği  
(Piston - Block  
Assembly Height)

+ 0,05 / + 0,35



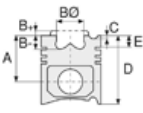


MAN - Ø 121

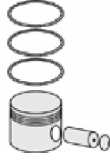
87-71564-STD



**Motor Özellikleri**  
(Engine Specifications)



**Piston Ölçüleri**  
(Piston Dimensions)



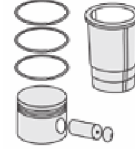
**Piston Parça No**  
(Piston Part No)



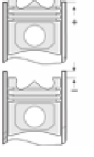
**Segman Seti**  
(Ring Set)



**Silindir Gömleği**  
(Liner)



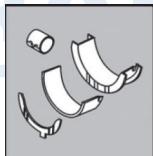
**Silindir Kit**  
(Assembly Set)



**Piston - Blok Montaj**  
**Yüksekliği**  
(Piston - Block  
Assembly Height)

**Kol Yatak**  
(Connecting Rod Bearing)

71-3004 STD



**FEDERAL-MOGUL**  
**POWERTRAIN**  
TÜRKİYE





MAN - Ø 121

87-71565-STDA

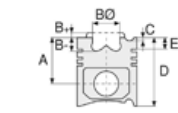


**Motor Özellikleri**  
(Engine Specifications)

İmalatçı (Manufacturer):  
MAN  
Çap (Diameter): Ø 121  
FM Grup No: 5415

**D 2156 HM/HMN/  
MGN/MY/MNY/  
MYN/HNY**

6 Sil. Dizel 10343cc  
142/158/169 Kw  
(192/215/230 PS) 17:1  
10 Ue 192, 10.215,  
12 Ue 192, 12.192,  
12.215, 13.215, 13.230,  
15.192, 15.216, 21.215,  
22.215, 9.192, 9.216,  
SG192, SL192  
1966 - 1971



**Piston Ölçüleri**  
(Piston Dimensions)

A : 94.000  
B - : 48.600  
BØ : 57.900  
D : 162.000  
E : 20.000

Pim: 45 x 102



**Piston Özellikleri**  
(Piston Features)

Segman Taşıyıcı  
(Ring Carrier)  
Sert Anotlama  
(Hard Anodizing)  
Gözarası Düz  
(Flat Eye Gap)



**Piston Parça No**  
(Piston Part No)

87-274800-63  
87-71565-STD1A  
0,20mm Kısa (Short)

87-274800-64  
87-71565-STD2A  
0,40mm Kısa (Short)

87-274800-53  
87-71565-STD3A  
0,60mm Kısa (Short)

87-274800-62  
87-71565-STDA



**Segman Seti**  
(Ring Set)

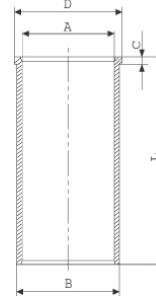
06-274800-20-STD

3.500 CR IKA  
3.000 STD  
3.000 STD  
5.500 CR STD



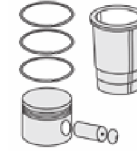
**Silindir Gömleği**  
(Liner)

14-022830-00-DH  
B : 125.990  
L : 287.000  
D : 132.000  
C : 8.000

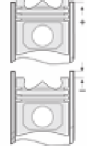


14-022831-00-DH  
B : 126.490  
L : 287.000  
D : 132.000  
C : 8.000

Dış çap 0,50 mm Farklı  
(Outer Diameter  
0,50 mm Different)



**Silindir Kit**  
(Assembly Set)



**Piston - Blok Montaj**  
Yüksekliği  
(Piston - Block  
Assembly Height)

+ 0,05 / + 0,35





MAN - Ø 123

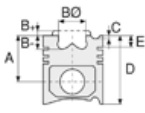
06-961600-20-STD



**Motor Özellikleri**  
(Engine Specifications)

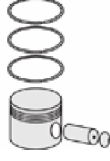
İmalatçı (Manufacturer):  
MAN  
Çap (Diameter): Ø 123  
FM Grup No: 5418

**D 2356/D2366**  
6 Sil. Dizel 10690cc  
170 Kw (231 PS) 17:1  
10.230 FL, 11 Ue 192,  
12 Ue 192, 12.230 H/FL,  
16.230 FNS, 19.230 DF,  
22.230 DF, 30.230 F,  
SG192, Sue 230  
1968 - 1974



**Piston Ölçüleri**  
(Piston Dimensions)

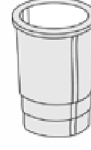
**Piston Özellikleri**  
(Piston Features)



**Piston Parça No**  
(Piston Part No)



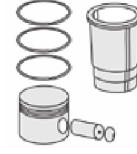
**Segman Seti**  
(Ring Set)



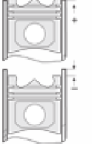
**Silindir Gömleği**  
(Liner)

06-961600-20-STD

3.500  CR IKA  
3.000  STD  
4.000  CR STD



**Silindir Kit**  
(Assembly Set)



**Piston - Blok Montaj**  
Yüksekliği  
(Piston - Block  
Assembly Height)





MAN - Ø 123

87-71567-STD A

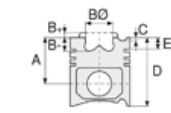


**Motor Özellikleri**  
(Engine Specifications)

İmalatçı (Manufacturer):  
MAN  
Çap (Diameter): Ø 123  
FM Grup No: 5417

**D 2356 HM2/9/10,  
HMN2, HMX**

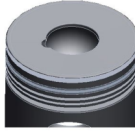
6 Sil. Dizel 10690cc  
170 Kw (231 PS) 17:1  
10.230 FL, 11 Ue 192,  
12 Ue 192, 12.230 H/FL,  
16.230 FNS, 19.230 DF,  
22.230 DF, 30.230 F,  
SG192, Sue 230  
1968 - 1974



**Piston Ölçüleri**  
(Piston Dimensions)

A : 94.000  
B - : 50.500  
BØ : 58.500  
D : 162.000  
E : 21.000

Pim: 45 x 102



**Piston Özellikleri**  
(Piston Features)

Segman Taşıyıcı  
(Ring Carrier)  
Sert Anotlama  
(Hard Anodizing)  
Gözarası Düz  
(Flat Eye Gap)



**Piston Parça No**  
(Piston Part No)

87-282100-13  
87-71567-STD1A  
0,20mm Kısa (Short)  
87-282100-14  
87-71567-STD2A  
0,40mm Kısa (Short)  
87-282100-12  
87-71567-STD A

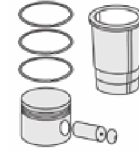


**Segman Seti**  
(Ring Set)

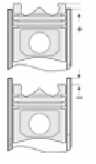
06-282100-20-STD  
3.500 CR IKA  
3.000 STD  
3.000 STD  
5.500 CR STD



**Silindir Gömleği**  
(Liner)



**Silindir Kit**  
(Assembly Set)



**Piston - Blok Montaj**  
Yüksekliği  
(Piston - Block  
Assembly Height)

+ 0,05 / + 0,35





MAN - Ø 125

87-71569-STDC



**Motor Özellikleri**  
(Engine Specifications)

İmalatçı (Manufacturer):  
MAN  
Çap (Diameter): Ø 125  
FM Grup No: 5419

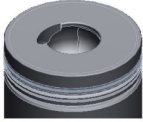
**D 2565 HM/M/ME/  
MF/MUE/MUH/MUL**  
5 Sil. Dizel 9510cc  
92/141 Kw (125/192 PS) 17:1  
11.168, 13.168, 13.192,  
14.168, 14.192, 15.168,  
15.192, 16.168, 16.192,  
22.192  
1976 - 1981

**D 2566 HM/M/ME/MH/  
MXF/MUE/MUH/MUL**  
6 Sil. Dizel 11413cc  
125/177 Kw (170/240 PS)  
17:1  
15.240, 16.240, 19.240,  
22.240, 26.240, 30.240,  
SD200, SG192, SG200,  
SL200, SU240, Sue240  
1976 - 1981

**Piston Ölçüleri**  
(Piston Dimensions)

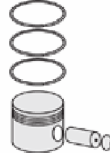
A : 89.870  
B - : 44.000  
BØ : 49.500  
D : 141.870  
E : 19.000

Pim: 46 x 105



**Piston Özellikleri**  
(Piston Features)

Segman Taşıyıcı  
(Ring Carrier)  
Sert Anotlama  
(Hard Anodizing)  
Yağ Püskürtme Oyuğu  
(Oil Spray Groove)  
Gözarası Düz  
(Flat Eye Gap)



**Piston Parça No**  
(Piston Part No)

87-280200-23  
87-71569-STD1C  
0,20mm Kısa (Short)  
87-280200-24  
87-71569-STD2C  
0,40mm Kısa (Short)  
87-280200-22  
87-71569-STDC

87-874400-23  
87-71569-STD1F  
0,20mm Kısa (Short)  
87-874400-24  
87-71569-STD2F  
0,40mm Kısa (Short)  
87-874400-22  
87-71569-STDF



**Segman Seti**  
(Ring Set)

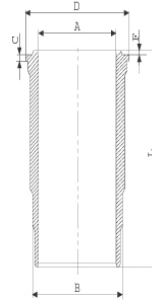
06-280200-40-STD  
3.000 IKA CR  
3.000 STD  
5.000 CR STD  
Goetze® LKZ-Ring®

06-874400-20-STD  
3.000 IKA CR  
3.000 STD  
5.000 CR STD  
Goetze® LKZ-Ring®



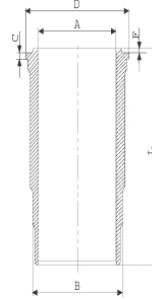
**Silindir Gömleği**  
(Liner)

14-455690-00-WH  
B : 140.000  
L : 270.000  
D : 152.000  
C : 10.050  
F : 1.000



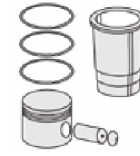
Dış Yüzeyi  
Fosfat Kaplı  
(Outer Surface  
Phosphate Coated)

14-450370-00-WH  
B : 140.000  
L : 270.000  
D : 152.000  
C : 10.050  
F : 1.000



O-RING Bilgi  
(O-RING Information)  
24-32371-30/O  
2x 138\*2,1 FPM  
2x 140\*4 FPM

14-450370-00-WH  
O-RING Bilgi  
(O-RING Information)  
24-32371-30/O  
2x 138\*2,1 FPM  
2x 140\*4 FPM

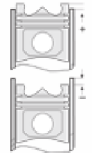


**Silindir Kit**  
(Assembly Set)

89-280200-22-STD  
89-71569-STDC

89-280200-12-STD  
89-71569-STDH

89-874400-22-STD  
89-71569-STDF



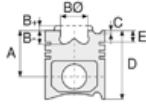
**Piston - Blok Montaj**  
Yüksekliği  
(Piston - Block  
Assembly Height)

0 / + 0,32

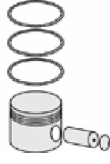




**Motor Özellikleri**  
(Engine Specifications)



**Piston Ölçüleri**  
(Piston Dimensions)



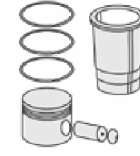
**Piston Parça No**  
(Piston Part No)



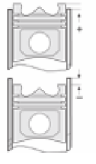
**Segman Seti**  
(Ring Set)



**Silindir Gömleği**  
(Liner)

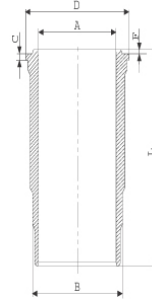


**Silindir Kit**  
(Assembly Set)



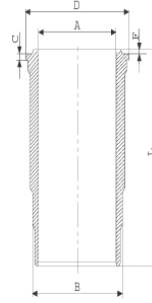
**Piston - Blok Montaj**  
**Yüksekliği**  
(Piston - Block  
Assembly Height)

14-452880-00-WH  
B : 140.000  
L : 270.000  
D : 152.000  
C : 10.550  
F : 1.000



Flanş 0,50mm Farklı  
(Flange 0.50mm  
Different)

14-454560-00-WH  
B : 140.000  
L : 270.000  
D : 152.000  
C : 10.250  
F : 1.000



Flanş 0,20mm Farklı  
(Flange 0,20mm  
Different)



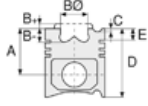


MAN - Ø 125

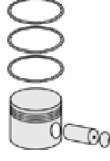
87-71569-STD



**Motor Özellikleri**  
(Engine Specifications)



**Piston Ölçüleri**  
(Piston Dimensions)



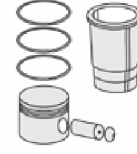
**Piston Parça No**  
(Piston Part No)



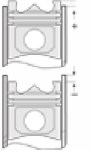
**Segman Seti**  
(Ring Set)



**Silindir Gömleği**  
(Liner)

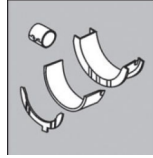


**Silindir Kit**  
(Assembly Set)



**Piston - Blok Montaj**  
**Yüksekliği**  
(Piston - Block  
Assembly Height)

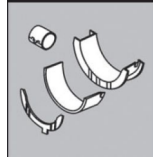
**Ana Yatak**  
(Main Bearing)



H992/6 STD

H992/7 STD

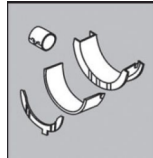
**Kol Burcu**  
(Small End Bushing)



71-3561/6 STD

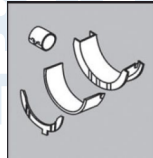
71-2965 STD

**Eksantrik Yatak**  
(Camshaft Bearing)



N109/7L STD

**Kol Burcu**  
(Small End Bushing)



55-2862 SEMI

55-4747 SEMI



**FEDERAL-MOGUL**  
**POWERTRAIN**  
TÜRKİYE

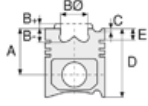


MAN - Ø 125

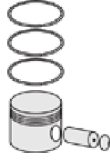
87-71569-STDC



**Motor Özellikleri**  
(Engine Specifications)



**Piston Ölçüleri**  
(Piston Dimensions)



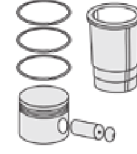
**Piston Parça No**  
(Piston Part No)



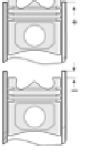
**Segman Seti**  
(Ring Set)



**Silindir Gömleği**  
(Liner)



**Silindir Kit**  
(Assembly Set)



**Piston - Blok Montaj**  
**Yüksekliği**  
(Piston - Block  
Assembly Height)

**Silindir Kapak Conta**  
(Cylinder Head Gasket)



30-025059-10

BG650

**Üst Takım Conta**  
(Cylinder Head Full Gasket)



21-25059-24/0

**Alt Takım Conta**  
(Cylinder Gasket Crankcase)



22-25060-01/0

**Full Takım Conta**  
(Full Set Gasket)



GV502

TÜRKİYE



MAN - Ø 125

87-71570-STDB



**Motor Özellikleri**  
(Engine Specifications)

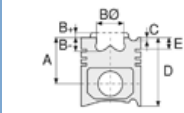
İmalatçı (Manufacturer):  
MAN  
Çap (Diameter): Ø 125  
FM Grup No: 5420

**D 2565 MT/MK/MKUL**

5 Sil. Dizel 9510cc  
169,5 Kw (230 PS) 17:1  
32.321 DFAS/DF/  
DFS/DFK/DFAK,  
BUS 297/298,  
SR240, SR260  
1978....

**D 2566**

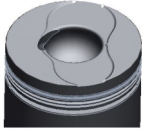
6 Sil. Dizel 11407cc  
162/235 Kw  
(220/320) 17:1  
19.280 F/FL/FT/FK/  
FS/FAS/FAK/D,  
19.281 F/FL/FK/FS/  
FAS/FAK/U/UL,  
19.321, 22.280 FNL,  
22.281 FNL, 22.321  
UNL, 26.280  
DF/DFK/DFS/DFAS/  
DHAK/DH, 26.321  
DF/DFS/DFK/DFAS/  
DFAK, 30.280 VF/  
DHAK, 32.281 DHAK/  
DHK/DF/DFS/DFK/  
DFA, 32.321 DFAS/  
DF/DFS/DFK/DFAK,  
SR240, SR260,  
SR280/297/298  
1976....



**Piston Ölçüleri**  
(Piston Dimensions)

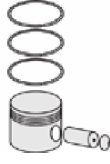
A : 89.800  
B - : 43.000  
BØ : 52.000  
C1 : 1.700  
D : 141.800  
E : 18.700

Pim: 46 x 105



**Piston Özellikleri**  
(Piston Features)

Segman Taşıyıcı  
(Ring Carrier)  
Sert Anotlama  
(Hard Anodizing)  
Yağ Püskürtme Oyuğu  
(Oil Jet Cut-out)  
Gözarası Düz  
(Flat Eye Gap)



**Piston Parça No**  
(Piston Part No)

87-280400-42  
87-71570-STDB  
87-280400-43  
87-71570-STDB  
0,20mm Kısa (Short)

87-280400-44  
87-71570-STDB  
0,40mm Kısa (Short)



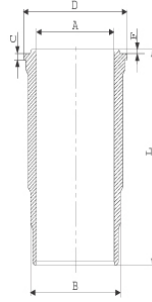
**Segman Seti**  
(Ring Set)

06-280400-40-STD  
3.500 CR KV4  
3.000 STD  
5.000 CR STD  
Goetze® LKZ-Ring®



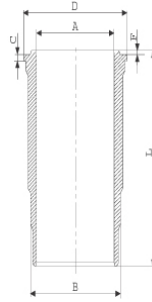
**Silindir Gömleği**  
(Liner)

14-450370-00-WH  
B : 140.000  
L : 270.000  
D : 152.000  
C : 10.050  
F : 1.000

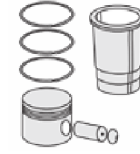


O-RING Bilgi  
(O-RING Information)  
24-32371-30/O  
2x 138\*2,1 FPM  
2x 140\*4 FPM

14-452880-00-WH  
B : 140.000  
L : 270.000  
D : 152.000  
C : 10.550  
F : 1.000

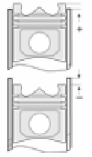


Flanş 0,50mm Farklı  
(Flange 0,50mm  
Different)



**Silindir Kit**  
(Assembly Set)

89-280400-42-STD  
89-71570-STDB



**Piston - Blok Montaj**  
Yüksekliği  
(Piston - Block  
Assembly Height)

0 / + 0,32





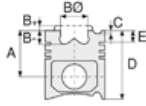


MAN - Ø 125

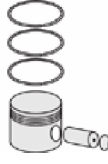
87-71570-STDB



**Motor Özellikleri**  
(Engine Specifications)



**Piston Ölçüleri**  
(Piston Dimensions)



**Piston Parça No**  
(Piston Part No)

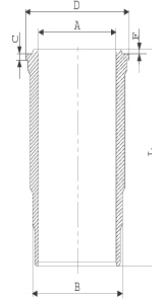


**Segman Seti**  
(Ring Set)



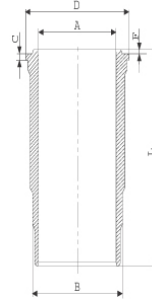
**Silindir Gömleği**  
(Liner)

14-454560-00-WH  
B : 140.000  
L : 270.000  
D : 152.000  
C : 10.250  
F : 1.000

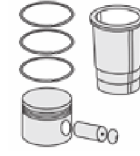


Flanş 0,20mm Farklı  
(Flange 0,20mm  
Different)

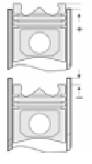
14-455690-00-WH  
B : 140.000  
L : 270.000  
D : 152.000  
C : 10.050  
F : 1.000



Dış Yüzeyi  
Fosfat Kaplı  
(Outer Surface  
Phosphate Coated)



**Silindir Kit**  
(Assembly Set)



**Piston - Blok Montaj**  
Yüksekliği  
(Piston - Block  
Assembly Height)

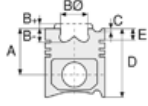


MAN - Ø 125

87-71570-STD B



**Motor Özellikleri**  
(Engine Specifications)



**Piston Ölçüleri**  
(Piston Dimensions)



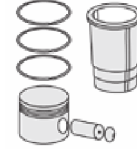
**Piston Parça No**  
(Piston Part No)



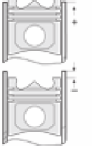
**Segman Seti**  
(Ring Set)



**Silindir Gömleği**  
(Liner)



**Silindir Kit**  
(Assembly Set)



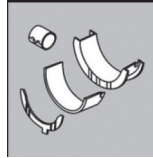
**Piston - Blok Montaj**  
**Yüksekliği**  
(Piston - Block  
Assembly Height)

**Ana Yatak**  
(Main Bearing)



H992/7 STD

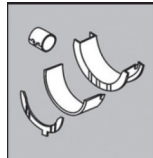
**Kol Yatak**  
(Connecting Rod Bearing)



71-3561/6 STD

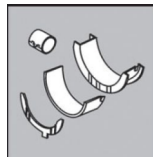
71-2965 STD

**Eksantrik Yatak**  
(Camshaft Bearing)



N109/7L STD

**Kol Burcu**  
(Small End Bushing)



55-2862 SEMI

55-4747 SEMI



MAN - Ø 125

87-71571-STD A



**Motor Özellikleri**  
(Engine Specifications)

İmalatçı (Manufacturer):  
MAN  
Çap (Diameter): Ø 125  
FM Grup No: 5422

**D 2538 M/MF/ME**

8 Sil. Dizel 12756cc  
160/188 Kw  
(218/256 PS) 17:1  
16.256, 19.256,  
26.256, 30.256  
1972 - 1976

**D 2530 ME/MF/MXF**

10 Sil. Dizel 15945cc  
156/196/235 Kw  
(212/267/320 PS) 17:1  
16.320, 19.320,  
20.320, 22.320,  
26.320, 30.320,  
32.320, 38.320,  
DF 4525, DF 5175,  
DF K-3875  
1972 - 1981

**Piston Ölçüleri**  
(Piston Dimensions)

A : 92.300  
B- : 44.900  
BØ : 54.600  
D : 137.300  
E : 22.000

Pim: 46 x 97



**Piston Özellikleri**  
(Piston Features)

Segman Taşıyıcı  
(Ring Carrier)  
Gözarası Konik  
(Conical Eye Gap)



**Piston Parça No**  
(Piston Part No)

87-873700-12  
87-71571-STD A



**Segman Seti**  
(Ring Set)

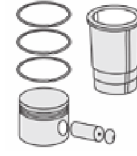
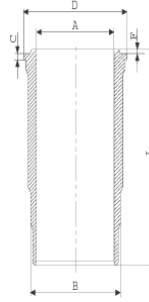
06-873700-20-STD

3.000 CR KV4  
3.000 STD  
5.000 CR STD



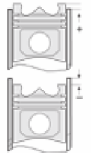
**Silindir Gömleği**  
(Liner)

14-451090-00-WH  
B : 140.000  
L : 253.000  
D : 152.000  
C : 10.050  
F : 1.000



**Silindir Kit**  
(Assembly Set)

89-873700-12-STD  
89-71571-STD A



**Piston - Blok Montaj**  
Yüksekliği  
(Piston - Block  
Assembly Height)

0 / +0,40



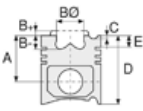


MAN - Ø 125

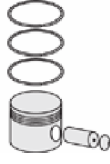
87-71571-STD A



**Motor Özellikleri**  
(Engine Specifications)



**Piston Ölçüleri**  
(Piston Dimensions)



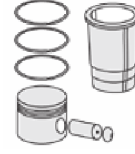
**Piston Parça No**  
(Piston Part No)



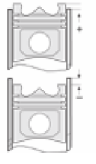
**Segman Seti**  
(Ring Set)



**Silindir Gömleği**  
(Liner)



**Silindir Kit**  
(Assembly Set)



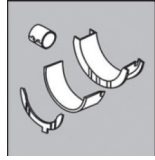
**Piston - Blok Montaj**  
Yüksekliği  
(Piston - Block  
Assembly Height)

**ANA YATAK**  
(MAIN BEARING)



H993/5 STD

**KOL YATAK**  
(ARM BED)

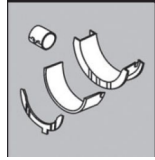


71-3638 STD

71-3324 STD

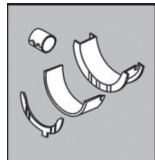
71-3289/2 STD

**EKSANTRİK YATAK**  
(ECCENTRIC BEARING)



N110/5L STD

**KOL BURCU**  
(SMALL END BUSH)



55-2862 SEMI

**SİL. KAPAK. CONTA**  
(CYLINDER HEAD GASKET)



30-025059-10





MAN - Ø 125

87-71572-STD A



**Motor Özellikleri**  
(Engine Specifications)

İmalatçı (Manufacturer):  
MAN  
Çap (Diameter): Ø 125  
FM Grup No: 5450

**D 2548 MT/MTF**

8 Sil. Dizel 13940cc  
360 PS 17:1  
Turbo  
Endüstriyel (Industrial)  
- 1974

**D 2540 MT/MTE/MTF**

10 Sil. Dizel 17426cc  
390/550 PS 17:1  
Turbo  
Endüstriyel (Industrial)  
- 1974

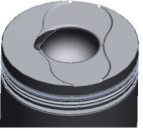
**D 2542 MTE/MLE**

12 Sil. Dizel 20190cc  
570/650 PS 17:1  
Turbo  
Endüstriyel (Industrial)  
- 1974

**Piston Ölçüleri**  
(Piston Dimensions)

A : 81.300  
B- : 37.000  
BØ : 49.500  
D : 130.300  
E : 18.700

Pim: 46 x 105

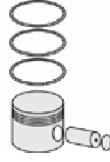


**Piston Özellikleri**  
(Piston Features)

Segman Taşıyıcı  
(Ring Carrier)  
Sert Anotlama  
(Hard Anodizing)  
Soğutma Kanallı  
(Coolin Gallery)  
Yağ Püskürtme Oyuğu  
(Oil Jet Cut-out)  
Gözarası Konik  
(Conical Eye Gap)

**Piston Parça No**  
(Piston Part No)

87-873600-12  
87-71572-STD A



**Segman Seti**  
(Ring Set)

06-873600-20-STD

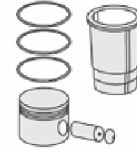
3.500 CR KV4  
3.000 GOE  
3.000 GOE  
5.000 CR GOE



**Silindir Gömleği**  
(Liner)

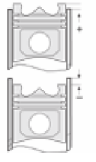


**Silindir Kit**  
(Assembly Set)

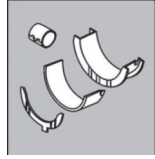


**Piston - Blok Montaj**  
Yüksekliği  
(Piston - Block  
Assembly Height)

0 / +0,32

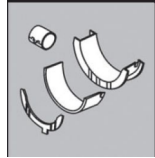


**ANA YATAK**  
(MAIN BEARING)



H993/5 STD

**KOL YATAK**  
(ARM BED)

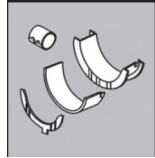


71-3638 STD

71-2965 STD

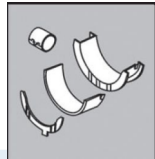
71-3289/2 STD

**EKSANTRİK YATAK**  
(ECCENTRIC BEARING)



N110/6L STD

**KOL BURCU**  
(SMALL END BUSH)



55-2862 SEMI

**SİL. KAPAK. CONTA**  
(CYLINDER HEAD GASKET)



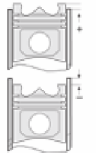
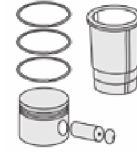
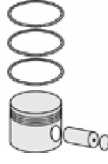
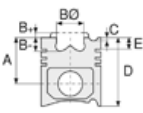
30-025059-10





MAN - Ø 125

87-72970-STD



**Motor Özellikleri**  
(Engine Specifications)

İmalatçı (Manufacturer):  
MAN  
Çap (Diameter): Ø 125  
FM Grup No: 5492

10 Sil. Dizel  
15900cc 303-400 PS  
16.320, MARİN  
1963....

**Piston Ölçüleri**  
(Piston Dimensions)

A : 92.300  
B- : 45.000  
BØ : 46.500  
C1 : 1.100  
D : 137.300

Pim: 46 x 97



**Piston Özellikleri**  
(Piston Features)

Segman Taşıyıcı  
(Ring Carrier)  
Sert Anotlama  
(Hard Anodizing)  
Soğutma Kanallı  
(Coolin Gallery)  
Gözarası Konik  
(Conical Eye Gap)

**Piston Parça No**  
(Piston Part No)

87-864300-02  
87-72970-STD

**Segman Seti**  
(Ring Set)

06-864300-20-STD  
3.000 CRP KVI  
3.000 P GOE  
3.000 P GOE  
5.000 CRP STD  
Goetze® LKZ-Ring®

**Silindir Gömleği**  
(Liner)

**Silindir Kit**  
(Assembly Set)

**Piston - Blok Montaj**  
Yüksekliği  
(Piston - Block  
Assembly Height)

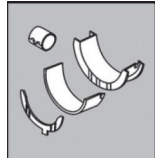
**Ana Yatak**  
(Main Bearing)



H993/5 STD

H992/5 STD

**Kol Yatak**  
(Connecting Rod Bearing)

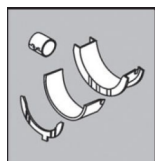


71-2965 STD

71-3638 STD

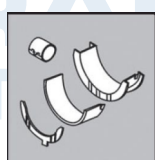
71-3289/2 STD

**Eksantrik Yatak**  
(Camshaft Bearing)



N110/6L STD

**Kol Burcu**  
(Small End Bushing)



55-2862 SEMI





MAN - Ø 126

87-72960-STD

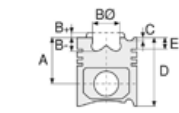


**Motor Özellikleri**  
(Engine Specifications)

İmalatçı (Manufacturer):  
MAN  
Çap (Diameter): Ø 126  
FM Grup No: 5487

**D 2676 LFO5 Euro4**  
6 Sil. Dizel 12419cc  
353 KW(480 Ps)  
TGS 33.480  
2009....

**D 2676 LF14 Euro5**  
6 Sil. Dizel 12419cc  
353 KW(480 Ps)  
TGX 18.480  
2009....



**Piston Ölçüleri**  
(Piston Dimensions)

A : 76.250  
B- : 20.100  
BØ : 71.400  
C1 : 2.000  
D : 121.840  
E : 12.600

Pim: 52 x 103



**Piston Özellikleri**  
(Piston Features)

Segman Taşıyıcı  
(Ring Carrier)  
Soğutma Kanallı  
(Coolin Gallery)  
Yağ Püskürtme Oyuğu  
(Oil Jet Cut-out)  
Burçlu Piston  
(Bushing Piston)  
Gözarası Konik  
(Conical Eye Gap)



**Piston Parça No**  
(Piston Part No)

87-817700-02  
87-72960-STD



**Segman Seti**  
(Ring Set)

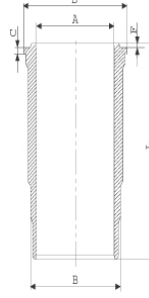
06-817700-20-STD  
4.000 CK KV4  
3.000 CR GOE  
4.000 CR CR

Goetze® LKZ-Ring® /  
Yağ Segmanı Matkap  
Delikli (Oil Ring Drill  
Perforated)

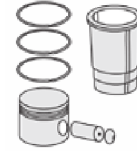


**Silindir Gömleği**  
(Liner)

14-451040-00-WH  
B : 139.500  
L : 257.500  
D : 150.000  
C : 8.070

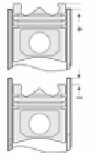


O-RING Bilgi (O-RING  
Information)  
24-35043-60/O  
2x 139,5\*3,95\*4,70 FPM



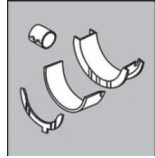
**Silindir Kit**  
(Assembly Set)

89-817700-02-STD  
89-72960-STD



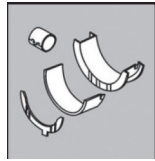
**Piston - Blok Montaj**  
Yüksekliği  
(Piston - Block  
Assembly Height)

**ANA YATAK**  
(MAIN BEARING)



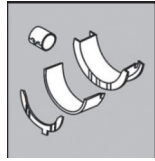
H1239/7 STD

**KOL YATAK**  
(ARM BED)



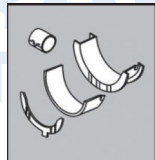
71-4529 STD

**AY YATAK**  
(THRUST WASHER)



A159/4 STD

**KOL BURCU**  
(SMALL END BUSH)



55-4563 SEMI





MAN - Ø 126

87-72961-STD

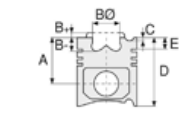


**Motor Özellikleri**  
(Engine Specifications)

İmalatçı (Manufacturer):  
MAN  
Çap (Diameter): Ø 126  
FM Grup No: 5489

**D 2676 LOH**  
**01-04/10/26-28**  
**Euro4/5**

6 Sil. Dizel 12419cc  
324-353 Kw  
(440-480 Ps)  
Cityliner, Lion's  
Coch L, Lion's Coch  
Supreme C, Lion's  
Coch Supreme L,  
Neoplan Skyliner,  
Starliner, Tourliner  
2006....



**Piston Ölçüleri**  
(Piston Dimensions)

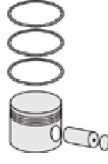
A : 76.250  
B - : 20.000  
BØ : 70.900  
C1 : 2.000  
D : 121.840  
E : 12.600

Pim: 52 x 103



**Piston Özellikleri**  
(Piston Features)

Segman Taşıyıcı  
(Ring Carrier)  
Soğutma Kanallı  
(Coolin Gallery)  
Yağ Püskürtme Oyuğu  
(Oil Jet Cut-out)  
Burçlu Piston  
(Bushing Piston)  
Gözarası Konik  
(Conical Eye Gap)



**Piston Parça No**  
(Piston Part No)

87-817700-22  
87-72961-STD



**Segman Seti**  
(Ring Set)

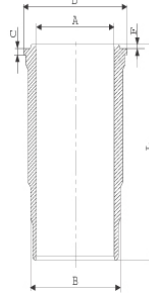
06-817700-20-STD  
4.000 CK KV4  
3.000 CR GOE  
4.000 CR CR

Goetze® LKZ-Ring® /  
Yağ Segmanı Matkap  
Delikli (Oil Ring Drill  
Perforated)

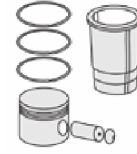


**Silindir Gömleği**  
(Liner)

14-451040-00-WH  
B : 139.500  
L : 257.500  
D : 150.000  
C : 8.070

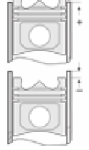


O-RING Bilgi (O-RING  
Information)  
24-35043-60/O  
2x 139,5\*3,95\*4,70 FPM



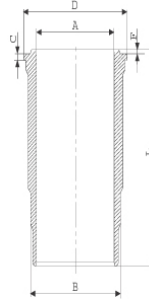
**Silindir Kit**  
(Assembly Set)

89-817700-22-STD  
89-72961-STD



**Piston - Blok Montaj**  
Yüksekliği  
(Piston - Block  
Assembly Height)

14-451690-00-WH  
B : 139.500  
L : 257.500  
D : 150.000  
C : 8.570



Flanş Kalınlığı ve Boğaz  
Çapı +0,50 mm Farklı  
(Flange Thickness and  
Throat Diameter +0.50  
mm Different)  
24-35043-60/O  
2x 139,5\*3,95\*4,70 FPM





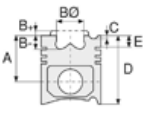


MAN - Ø 126

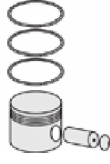
87-72961-STD



**Motor Özellikleri**  
(Engine Specifications)



**Piston Ölçüleri**  
(Piston Dimensions)



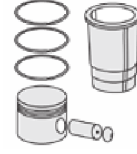
**Piston Parça No**  
(Piston Part No)



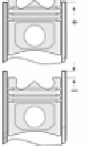
**Segman Seti**  
(Ring Set)



**Silindir Gömleği**  
(Liner)



**Silindir Kit**  
(Assembly Set)



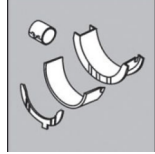
**Piston - Blok Montaj**  
**Yüksekliği**  
(Piston - Block  
Assembly Height)

**Eksantrik Yatak**  
(Eccentric Bearing)



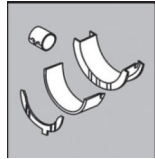
034727 STD

**Ana Yatak**  
(Main Bearing)



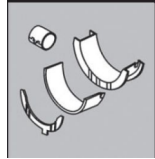
H1239/7 STD

**Kol Yatak**  
(Arm Bed)



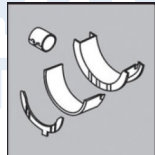
71-4529 STD

**Ay Yatak**  
(Thrust Washer)



A159/4 STD

**Kol Burcu**  
(Small End Bush)



55-4563 SEMI





MAN - Ø 126

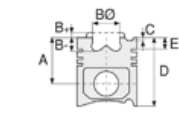
87-72962-STD



**Motor Özellikleri**  
(Engine Specifications)

İmalatçı (Manufacturer):  
MAN  
Çap (Diameter): Ø 126  
FM Grup No: 59013

**D 2676 LF26 Euro 6**  
6 Sil. Dizel 324  
KW-440 PS  
Neoplan-TGX-TGS  
2014....



**Piston Ölçüleri**  
(Piston Dimensions)

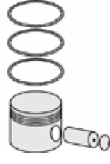
A : 76.200  
B- : 22.000  
BØ : 73.250  
C1 : 2.000  
D : 121.800  
E : 13.200

Pim: 52 x 103



**Piston Özellikleri**  
(Piston Features)

Segman Taşıyıcı  
(Ring Carrier)  
Soğutma Kanallı  
(Coolin Gallery)  
Yağ Püskürtme Oyuğu  
(Oil Jet Cut-out)  
Burçlu Piston  
(Bushing Piston)  
Gözarası Konik  
(Conical Eye Gap)



**Piston Parça No**  
(Piston Part No)

87-818300-02  
87-72962-STD



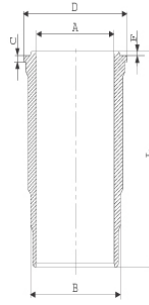
**Segman Seti**  
(Ring Set)

06-818300-20-STD  
3.500 PVD ST  
2.500 ST  
3.500 NT ST



**Silindir Gömleği**  
(Liner)

14-451740-00-WH  
B : 139.500  
L : 257.500  
D : 150.000  
C : 8.070  
R : 11.200



Kurum Giderme Ringli  
(With Soot Removal  
Ring)

24-35043-60/O  
2x 139,5\*3,95\*4,70 FPM

14-451740-00 WH  
Kurum Giderme Ringli  
(With Soot Removal  
Ring)

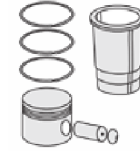
24-35043-60/O  
2x 139,5\*3,95\*4,70 FPM

14-451741-00 WH  
B : 139.500  
L : 257.500  
D : 150.000  
C : 8.570  
R : 11.200

Flanş kalınlığı 0,50 mm  
farklı (Flange thickness  
0.50 mm different)

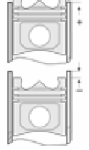
14-451742-00 WH  
B : 139.500  
L : 257.500  
D : 150.500  
C : 8.570  
R : 11.200

Flanş çapı + Flanş  
kalınlığı ve Boğaz alt çapı  
0,50 mm farklı



**Silindir Kit**  
(Assembly Set)

89-818300-02-STD  
89-72962-STD



**Piston - Blok Montaj**  
Yüksekliği  
(Piston - Block  
Assembly Height)



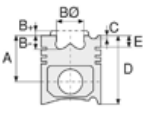


MAN - Ø 126

87-72962-STD



**Motor Özellikleri**  
(Engine Specifications)



**Piston Ölçüleri**  
(Piston Dimensions)



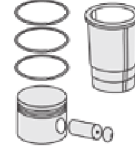
**Piston Parça No**  
(Piston Part No)



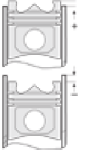
**Segman Seti**  
(Ring Set)



**Silindir Gömleği**  
(Liner)

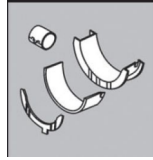


**Silindir Kit**  
(Assembly Set)



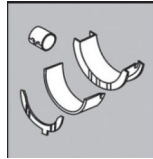
**Piston - Blok Montaj**  
**Yüksekliği**  
(Piston - Block  
Assembly Height)

**ANA YATAK**  
(MAIN BEARING)



H1239/7 STD

**KOL YATAK**  
(ARM BED)



71-4529 STD/ 71-4746 STD

**SİL. KAPAK. CONTA**  
(CYLINDER HEAD GASKET)



30-026235-40





MAN - Ø 126

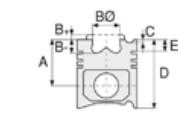
87-75566-STD



**Motor Özellikleri**  
(Engine Specifications)

İmalatçı (Manufacturer):  
MAN  
Çap (Diameter): Ø 126  
FM Grup No: 59014

**D2676 LF51**  
6 Sil. Dizel 12419cc  
368 Kw-500 PS  
NEOPLAN TGX EURO 6,  
TGA ÇEKİCİ  
2016...



**Piston Ölçüleri**  
(Piston Dimensions)

A : 71.300  
B- : 21.000  
BØ : 72.700  
C1 : 2.000  
D : 101.350  
E : 12.580

Pim: 52 x 82



**Piston Özellikleri**  
(Piston Features)

Soğutma Kanallı  
(Coolin Gallery)  
Gözarası Konik  
(Conical Eye Gap)



**Piston Parça No**  
(Piston Part No)

87-818300-22  
87-75566-STD  
Monosteel Çelik Piston  
(Monosteel Steel Piston)



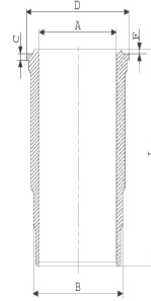
**Segman Seti**  
(Ring Set)

06-818300-20-STD  
3.500 PVD ST  
2.500 ST  
3.500 NT ST



**Silindir Gömleği**  
(Liner)

14-451740-00-WH  
B : 139.500  
L : 257.500  
D : 150.000  
C : 8.070  
R : 11.200

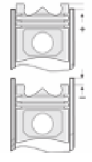


Kurum Giderme Ringli  
(With Soot Removal  
Ring)  
24-35043-60/O  
2x 139,5\*3,95\*4,70 FPM



**Silindir Kit**  
(Assembly Set)

89-818300-22-STD  
89-75566-STD



**Piston - Blok Montaj**  
Yüksekliği  
(Piston - Block  
Assembly Height)





MAN - Ø 128

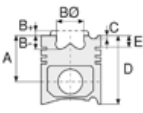
14-456190-00-WH



**Motor Özellikleri**  
(Engine Specifications)

İmalatçı (Manufacturer):  
MAN  
Çap (Diameter): Ø 128  
FM Grup No: 54006

**D2840LF O,4**  
Dizel 18273cc  
346kW/471PS 17:1  
19,462F, 19,502F,FS,  
Endüstriyel, Marin  
(Industrial, Marine)



**Piston Ölçüleri**  
(Piston Dimensions)

**Piston Özellikleri**  
(Piston Features)



**Piston Parça No**  
(Piston Part No)

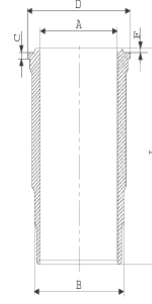


**Segman Seti**  
(Ring Set)

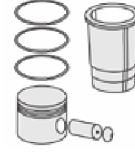


**Silindir Gömleği**  
(Liner)

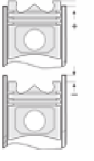
14-456190-00-WH  
B : 144.500  
L : 253.000  
D : 153.800  
C : 10.050  
F : 1.000



Dış Yüzeyi  
Fosfat Kaplı  
(Outer Surface  
Phosphate Coated)



**Silindir Kit**  
(Assembly Set)



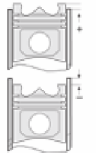
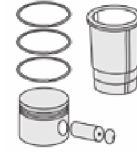
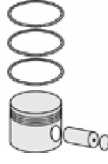
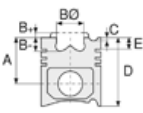
**Piston - Blok Montaj**  
Yüksekliği  
(Piston - Block  
Assembly Height)





MAN - Ø 128

87-71531-STD



**Motor Özellikleri**  
(Engine Specifications)

İmalatçı (Manufacturer):  
MAN  
Çap (Diameter): Ø 128  
FM Grup No: 54003

**E 2876 LUH 01/02**  
6 Sil. CNG 12816cc  
228Kw ( 310 ps )  
NL 313, Sabit Motor  
(Fixed Engine)  
2004...

**Piston Ölçüleri**  
(Piston Dimensions)

A : 78.700  
B- : 28.750  
BØ : 93.430  
BX : 6.500  
BY : 1.100  
D : 133.750  
E : 18.300

Pim: 50 x 107



**Piston Özellikleri**  
(Piston Features)

Segman Taşıyıcı  
(Ring Carrier)  
Yağ Püskürtme Oyuğu  
(Oil Jet Cut-out)  
Gözarası Konik  
(Conical Eye Gap)

**Piston Parça No**  
(Piston Part No)

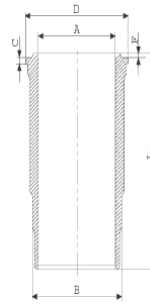
87-864400-02  
87-71531-STD

**Segman Seti**  
(Ring Set)

06-864400-20-STD  
3.500 CKS KVI  
3.000 STD STD  
4.000 CR STD  
Goetze® LKZ-Ring®

**Silindir Gömleği**  
(Liner)

14-452920-00-WH  
B : 144.500  
L : 270.000  
D : 153.800  
C : 10.070  
F : 1.000



O-RING Bilgi  
(O-RING Information)  
24-32448-70/O  
2x 138\*2,1 FPM  
2x 144\*4 FPM

**Silindir Kit**  
(Assembly Set)

89-864400-02-STD  
89-71531-STD

**Piston - Blok Montaj**  
Yüksekliği  
(Piston - Block  
Assembly Height)



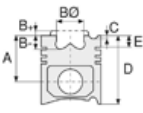


MAN - Ø 128

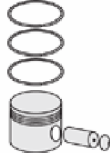
87-71531-STD



**Motor Özellikleri**  
(Engine Specifications)



**Piston Ölçüleri**  
(Piston Dimensions)



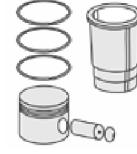
**Piston Parça No**  
(Piston Part No)



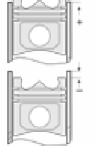
**Segman Seti**  
(Ring Set)



**Silindir Gömleği**  
(Liner)

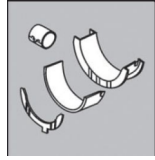


**Silindir Kit**  
(Assembly Set)



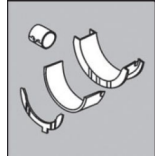
**Piston - Blok Montaj**  
**Yüksekliği**  
(Piston - Block  
Assembly Height)

**Ana Yatak**  
(Main Bearing)



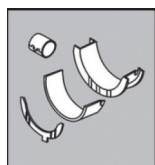
H1239/7 STD

**Kol Yatak**  
(Connecting Rod Bearing)



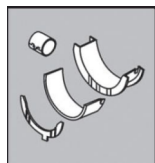
71-4746 STD

**Eksantrik Yatak**  
(Camshaft Bearing)



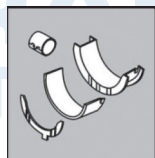
N109/7L STD

**Ay Yatak**  
(Thrust Washer)



A159/4 STD

**Kol Burcu**  
(Small End Bushing)



55-4584 SEMI





MAN - Ø 128

87-71535-STDB



**Motor Özellikleri**  
(Engine Specifications)

İmalatçı (Manufacturer):  
MAN  
Çap (Diameter): Ø 128  
FM Grup No: 5463

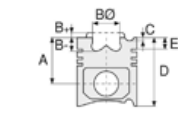
**D2840 LE 401/  
LYE/LZE**

10 Sil. Dizel 18270cc 13,5:1  
Turbo

Marin , Endüstriyel  
(Marine , Industrial)  
1994....

**D2848 LE 401/  
LYE/LZE**

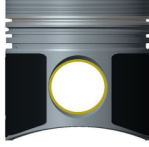
8 Sil. Dizel 14620cc  
Marin , Endüstriyel  
(Marine , Industrial)



**Piston Ölçüleri**  
(Piston Dimensions)

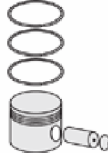
A : 81.250  
B- : 26.640  
BØ : 76.000  
BX : 2.000  
C1 : 1.300  
D : 130.300  
E : 18.800

Pim: 46 x 105



**Piston Özellikleri**  
(Piston Features)

Segman Taşıyıcı  
(Ring Carrier)  
Yağ Püskürtme Oyuğu  
(Oil Jet Cut-out)  
Burçlu Piston  
(Bushing Piston)  
Gözarası Düz  
(Flat Eye Gap)



**Piston Parça No**  
(Piston Part No)

87-283100-22  
87-71535-STDB



**Segman Seti**  
(Ring Set)

06-283100-40-STD

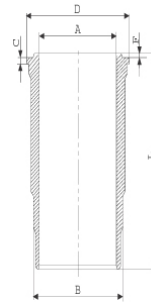
3.500 CR KV4  
3.000 STD  
5.000 CR STD



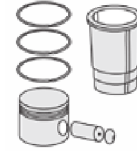
**Silindir Gömleği**  
(Liner)

14-458210-00-WH

B : 144.500  
L : 253.000  
D : 153.800  
C : 10.050  
F : 1.000

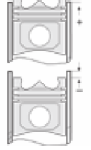


Dış Yüzey Fosfat Kaplı /  
O-RING Bilgi  
(Outer Surface  
Phosphate Coated /  
O-RING Information)  
24-32448-70/O  
2x 138\*2,1 FPM  
2x 144\*4 FPM



**Silindir Kit**  
(Assembly Set)

89-283100-22-STD  
89-71535-STDB



**Piston - Blok Montaj**  
Yüksekliği  
(Piston - Block  
Assembly Height)





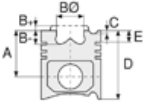


MAN - Ø 128

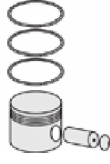
87-71535-STDB



**Motor Özellikleri**  
(Engine Specifications)



**Piston Ölçüleri**  
(Piston Dimensions)



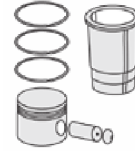
**Piston Parça No**  
(Piston Part No)



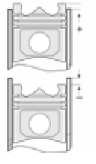
**Segman Seti**  
(Ring Set)



**Silindir Gömleği**  
(Liner)

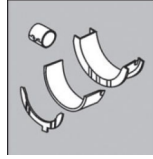


**Silindir Kit**  
(Assembly Set)



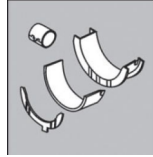
**Piston - Blok Montaj**  
**Yüksekliği**  
(Piston - Block  
Assembly Height)

**ANA YATAK**  
(MAIN BEARING)



H993/6 STD

**KOL YATAK**  
(ARM BED)

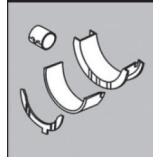


71-3638 STD

71-3289/2 STD

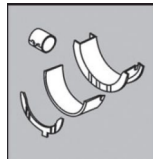
71-2965 STD

**EKSANTRİK YATAK**  
(ECCENTRIC BEARING)



N110/6L STD

**KOL BURCU**  
(SMALL END BUSH)



55-2862 SEMI

**SİL. KAPAK. CONTA**  
(CYLINDER HEAD GASKET)



30-026235-10





MAN - Ø 128

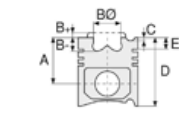
87-71536-STDB



**Motor Özellikleri**  
(Engine Specifications)

İmalatçı (Manufacturer):  
MAN  
Çap (Diameter): Ø 128  
FM Grup No: 5468

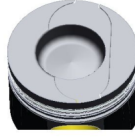
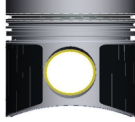
**D2842 LE**  
12 Sil. Dizel 21930cc  
497 KW (676 PS) 15,1:1  
Marin , Endüstriyel  
(Marine , Industrial)  
1987....



**Piston Ölçüleri**  
(Piston Dimensions)

A : 81.300  
B- : 30.000  
BØ : 68.000  
BX : 2.000  
C1 : 1.200  
D : 130.300  
E : 18.800

Pim: 46 x 105



**Piston Özellikleri**  
(Piston Features)

Segman Taşıyıcı  
(Ring Carrier)  
Yağ Püskürtme Oyuğu  
(Oil Jet Cut-out)  
Burçlu Piston  
(Bushing Piston)  
Gözarası Düz  
(Flat Eye Gap)



**Piston Parça No**  
(Piston Part No)

87-283100-93  
87-71536-STDB



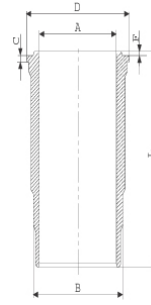
**Segman Seti**  
(Ring Set)

06-283100-40-STD  
3.500 CR KV4  
3.000 STD  
5.000 CR STD

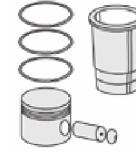


**Silindir Gömleği**  
(Liner)

14-458210-00-WH  
B : 144.500  
L : 253.000  
D : 153.800  
C : 10.050  
F : 1.000

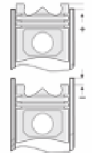


Dış Yüzey Fosfat Kaplı /  
O-RING Bilgi  
(Outer Surface  
Phosphate Coated /  
O-RING Information)  
24-32448-70/O  
2x 138\*2,1 FPM  
2x 144\*4 FPM



**Silindir Kit**  
(Assembly Set)

89-283100-93-STD  
89-71536-STDB



**Piston - Blok Montaj**  
Yüksekliği  
(Piston - Block  
Assembly Height)



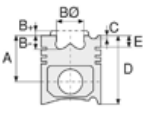


MAN - Ø 128

87-71536-STDB



**Motor Özellikleri**  
(Engine Specifications)



**Piston Ölçüleri**  
(Piston Dimensions)



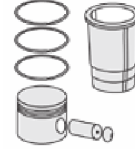
**Piston Parça No**  
(Piston Part No)



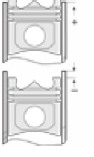
**Segman Seti**  
(Ring Set)



**Silindir Gömleği**  
(Liner)

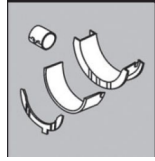


**Silindir Kit**  
(Assembly Set)



**Piston - Blok Montaj**  
**Yüksekliği**  
(Piston - Block  
Assembly Height)

**Kol Yatak**  
(Connecting Rod Bearing)

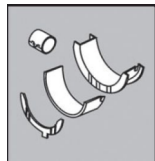


71-3638 STD

71-3289/2 STD

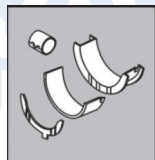
71-2965 STD

**Eksantrik Yatak**  
(Camshaft Bearing)



N110/7 STD

**Kol Burcu**  
(Small End Bushing)



55-2862 SEMI





MAN - Ø 128

87-71537-STD



**Motor Özellikleri**  
(Engine Specifications)

İmalatçı (Manufacturer):  
MAN  
Çap (Diameter): Ø 128  
FM Grup No: 5500

**D 2876 LF 06/07**  
**EURO2**

6 Sil. Dizel 12816cc 460  
18.463 FLT TG-A,  
19.462 DL, 19.462 FLS,  
19.463, 19.464 TG-A 460,  
23.464, 26.464,  
FORTUNA MEGA  
2000....

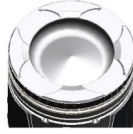
**D 2876 LF 04, LOH**  
**O2/O3 EURO3**

6 Sil. Dizel 12816cc 460 hp  
18.463 TGA 460,  
19.464 TG-A 460,  
FORTUNA MEGA  
1995....

**Piston Ölçüleri**  
(Piston Dimensions)

A : 79.250  
B - : 21.740  
BØ : 85.280  
C1 : 1.900  
D : 134.250  
E : 18.700

Pim: 50 x 107



**Piston Özellikleri**  
(Piston Features)

Segman Taşıyıcı  
(Ring Carrier)  
Sert Anotlama  
(Hard Anodizing)  
Yağ Püskürtme Oyuğu  
(Oil Jet Cut-out)  
Gözarası Konik  
(Conical Eye Gap)

**Piston Parça No**  
(Piston Part No)

87-143800-92  
87-71537-STD  
87-143800-93  
87-71537-STD1  
0,20 mm Kısa (Short)  
87-143800-94  
87-71537-STD2  
0,40 mm Kısa (Short)  
87-143800-84  
87-71537-STD3  
0,60 mm Kısa (Short)

87-143800-20  
87-71537-STD B

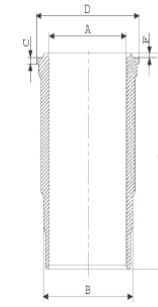
**Segman Seti**  
(Ring Set)

06-143800-20-STD  
4.000 CK KV4  
3.000 CR GOE  
4.000 CR GOE  
Goetze® LKZ-Ring®

06-143800-40-STD  
4.000 CK KV4  
3.000 CR GOE  
4.000 CR GOE  
Goetze® LKZ-Ring®

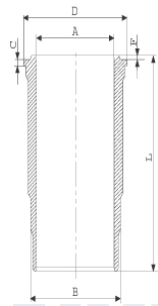
**Silindir Gömleği**  
(Liner)

14-452920-00-WH  
B : 144.500  
L : 270.000  
D : 153.800  
C : 10.070  
F : 1.000



O-RING Bilgi  
(O-RING Information)  
24-32448-70/O  
2x 138\*2,1 FPM  
2x 144\*4 FPM

14-452930-00-WH  
B : 144.500  
L : 270.000  
D : 153.800  
C : 10.570  
F : 1.000



Flanş 0,50mm Farklı  
(Flange 0.50mm  
Different)

**Silindir Kit**  
(Assembly Set)

89-143800-92-STD  
89-71537-STD

**Piston - Blok Montaj**  
**Yüksekliği**  
(Piston - Block  
Assembly Height)

-0,01 / + 0,33



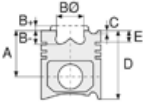


MAN - Ø 128

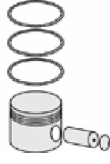
87-71537-STD



**Motor Özellikleri**  
(Engine Specifications)



**Piston Ölçüleri**  
(Piston Dimensions)



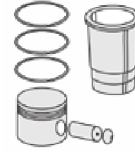
**Piston Parça No**  
(Piston Part No)



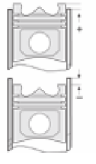
**Segman Seti**  
(Ring Set)



**Silindir Gömleği**  
(Liner)



**Silindir Kit**  
(Assembly Set)



**Piston - Blok Montaj**  
**Yüksekliği**  
(Piston - Block  
Assembly Height)

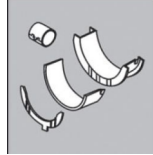
**Ana Yatak**  
(Main Bearing)



H1239/7 STD

H083/7 0.50MM

**Kol Yatak**  
(Connecting Rod Bearing)



71-4746 STD

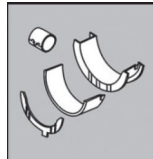
71-2965 STD

**Eksantrik Yatak**  
(Camshaft Bearing)



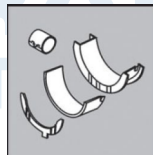
N109/7L STD

**Ay Yatak**  
(Thrust Washer)



A159/4 STD

**Kol Burcu**  
(Small End Bushing)



55-3813 SEMI

55-4832 SEMI (KONİK)





MAN - Ø 128

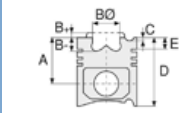
87-71538-STD



**Motor Özellikleri**  
(Engine Specifications)

İmalatçı (Manufacturer):  
MAN  
Çap (Diameter): Ø 128  
FM Grup No: 59011

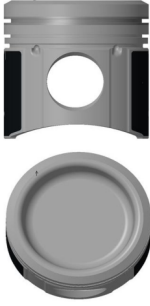
**E 2876 LUH 03**  
(CNG MOTOR)  
6 Sil. CNG 12816cc  
235 KW-320 PS  
MAN LION S CITY A 22  
2009...



**Piston Ölçüleri**  
(Piston Dimensions)

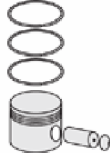
A : 78.300  
B- : 27.500  
BØ : 98.950  
D : 133.300  
E : 18.000

Pim: 50 x 107



**Piston Özellikleri**  
(Piston Features)

Segman Taşıyıcı  
(Ring Carrier)  
Yağ Püskürtme Oyuğu  
(Oil Jet Cut-out)  
Gözarası Konik  
(Conical Eye Gap)



**Piston Parça No**  
(Piston Part No)

87-864400-22  
87-71538-STD



**Segman Seti**  
(Ring Set)

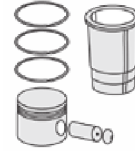
06-864400-20-STD

3.500 CKS KVI  
3.000 STD  
4.000 CR STD

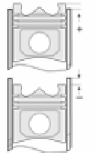
Goetze® LKZ-Ring®



**Silindir Gömleği**  
(Liner)

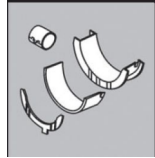


**Silindir Kit**  
(Assembly Set)



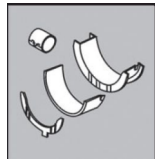
**Piston - Blok Montaj**  
Yüksekliği  
(Piston - Block  
Assembly Height)

**Ana Yatak**  
(Main Bearing)



H1239/7 STD

**Kol Yatak**  
(Connecting Rod Bearing)



71-4746 STD

**Sil. Kapak. Conta**  
(Cylinder Head Gasket)



30-026235-40





MAN - Ø 128

87-71542-STDB



**Motor Özellikleri**  
(Engine Specifications)

İmalatçı (Manufacturer):  
MAN  
Çap (Diameter): Ø 128  
FM Grup No: 5453

**D2840.LE2A,LE401,T**  
10 Sil. Dizel 18270cc

294 Kw(400PS) 15,5:1  
TURBO,LLK  
19.501, Endüstriyel, Marin  
(Industrial, Marine)  
1994 - 1997

**D2842.LE20, Le21,  
LXE, MLE, T**

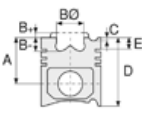
12 Sil. Dizel 21930cc  
375-559 Kw(510-760 PS)  
15,5:1  
TURBO, LLK  
19.501, Endüstriyel, Marin  
(Industrial, Marine)  
- 1974

**D2842.LXF**  
12 Sil. Dizel 21930cc

735 Kw(1000 PS)  
TURBO,LLK  
Endüstriyel (Industrial)  
- 1974

**D2848.LE,T**  
8 Sil. Dizel 14620cc 15,5:1

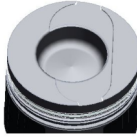
TURBO, LLK  
19.501, Endüstriyel, Marin  
(Industrial, Marine)  
- 1974



**Piston Ölçüleri**  
(Piston Dimensions)

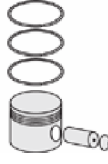
A : 81.300  
B - : 30.000  
BØ : 68.000  
BX : 2.000  
C1 : 1.200  
D : 130.300  
E : 18.800

Pim: 46 x 105



**Piston Özellikleri**  
(Piston Features)

Segman Taşıyıcı  
(Ring Carrier)  
Yağ Püskürtme Oyuğu  
(Oil Jet Cut-out)  
Gözarası Düz  
(Flat Eye Gap)



**Piston Parça No**  
(Piston Part No)

87-283100-23  
87-71542-STDB



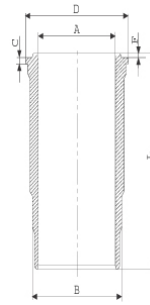
**Segman Seti**  
(Ring Set)

06-283100-40-STD  
4.000 CK KV4  
3.000 STD  
4.000 CR STD

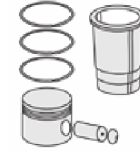


**Silindir Gömleği**  
(Liner)

14-458210-00-WH  
B : 144.500  
L : 253.000  
D : 153.800  
C : 10.050  
F : 1.000

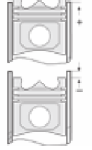


Dış Yüzeyi  
Fosfat Kaplı  
(Outer Surface  
Phosphate Coated)  
24-32448-70/O  
2x 138\*2,1 FPM  
2x 144\*4 FPM



**Silindir Kit**  
(Assembly Set)

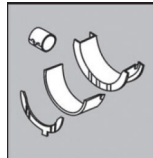
89-283100-23-STD  
89-71542-STDB



**Piston - Blok Montaj**  
Yüksekliği  
(Piston - Block  
Assembly Height)

+0,09 / + 0,39

**KOL YATAK**  
(ARM BED)

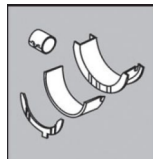


71-3638 STD

71-3289/2 STD

71-2965 STD

**KOL BURCU**  
(SMALL END BUSH)



55-3328 SEMI

**SİL. KAPAK. CONTA**  
(CYLINDER HEAD GASKET)



30-026235-10





**Motor Özellikleri**  
(Engine Specifications)

İmalatçı (Manufacturer):  
MAN  
Çap (Diameter): Ø 128  
FM Grup No: 5469

**D 2840 LE 301**  
Dizel 368 KW-500 PS  
1996....

**D 2840 LE 302**  
Dizel 443KW-602PS  
1969....

**D 2840 LE 401**  
10 Sil. Dizel 478  
KW-650 PS  
1994....

**D 2840 LE 403**  
8 Sil. Dizel 773  
KW-1050 HP  
1995....

**D 2840 LE 402**  
12 Sil. Dizel  
441KW-600PS  
1998....

**Piston Ölçüleri**  
(Piston Dimensions)

A : 81.250  
B- : 27.200  
BØ : 76.000  
C1 : 1.300  
D : 130.300  
E : 18.800

Pim: 46 x 105

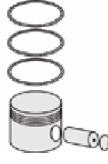


**Piston Özellikleri**  
(Piston Features)

Segman Taşıyıcı  
(Ring Carrier)  
Soğutma Kanallı  
(Coolin Gallery)  
Yağ Püskürtme Oyuğu  
(Oil Jet Cut-out)  
Burçlu Piston  
(Bushing Piston)  
Gözarası Konik  
(Conical Eye Gap)

**Piston Parça No**  
(Piston Part No)

87-124500-52  
87-71543-STD A



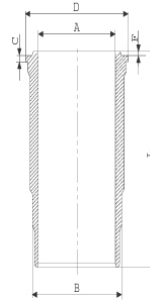
**Segman Seti**  
(Ring Set)

06-124500-20-STD  
4.000 CK KV4  
3.000 GOE  
4.000 CR GOE  
Goetze® LKZ-Ring® /  
Yağ Segmanı Matkap  
Delik (Oil Ring Drill Hole)



**Silindir Gömleği**  
(Liner)

14-458210-00-WH  
B : 144.500  
L : 253.000  
D : 153.800  
C : 10.050  
F : 1.000

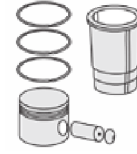


Dış Yüzeyi Fosfat Kaplı /  
O-RING Bilgi  
(Outer Surface  
Phosphate Coated /  
O-RING Information)  
24-32448-70/O  
2x 138\*2,1 FPM  
2x 144\*4 FPM

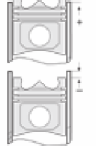


**Silindir Kit**  
(Assembly Set)

89-124500-52-STD  
89-71543-STD A



**Piston - Blok Montaj**  
Yüksekliği  
(Piston - Block  
Assembly Height)





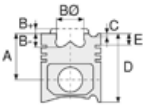


MAN - Ø 128

87-71543-STD A



**Motor Özellikleri**  
(Engine Specifications)



**Piston Ölçüleri**  
(Piston Dimensions)



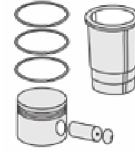
**Piston Parça No**  
(Piston Part No)



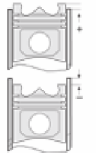
**Segman Seti**  
(Ring Set)



**Silindir Gömleği**  
(Liner)

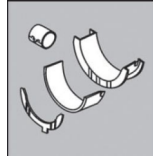


**Silindir Kit**  
(Assembly Set)



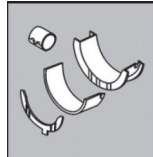
**Piston - Blok Montaj**  
**Yüksekliği**  
(Piston - Block  
Assembly Height)

**ANA YATAK**  
(MAIN BEARING)



H993/6 STD

**KOL YATAK**  
(ARM BED)

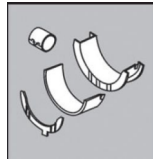


71-3638 STD

71-3289/2 STD

71-2965 STD

**EKSANTRİK YATAK**  
(ECCENTRIC BEARING)



N110/6L STD

**SİL. KAPAK. CONTA**  
(CYLINDER HEAD GASKET)



30-026235-10





MAN - Ø 128

87-71544-STD



**Motor Özellikleri**  
(Engine Specifications)

İmalatçı (Manufacturer):  
MAN  
Çap (Diameter): Ø 128  
FM Grup No: 5465

**D2840 LE 203**  
10 Sil. Dizel 18270cc  
673-741 PS(495-545 kw)  
Marin, Endüstriyel  
(Marine, Industrial)  
- 1974

**Piston Ölçüleri**  
(Piston Dimensions)

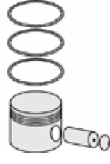
A : 81.300  
B- : 25.600  
BØ : 71.900  
BX : 2.100  
C1 : 1.300  
D : 130.300  
E : 18.700

Pim: 46 x 105



**Piston Özellikleri**  
(Piston Features)

Segman Taşıyıcı  
(Ring Carrier)  
Yağ Püskürtme Oyuğu  
(Oil Jet Cut-out)  
Burçlu Piston  
(Bushing Piston)  
Gözarası Konik  
(Conical Eye Gap)



**Piston Parça No**  
(Piston Part No)

87-124500-32  
87-71544-STD



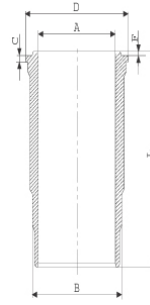
**Segman Seti**  
(Ring Set)

06-124500-20-STD  
4.000 CK KV4  
3.000 GOE  
4.000 CR GOE  
Goetze® LKZ-Ring® /  
Yağ Segmanı Matkap  
Delik (Oil Ring Drill Hole)

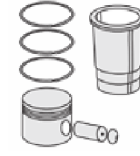


**Silindir Gömleği**  
(Liner)

14-458210-00-WH  
B : 144.500  
L : 253.000  
D : 153.800  
C : 10.050  
F : 1.000

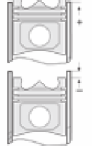


Dış Yüzeyi Fosfat Kaplı /  
O-RING Bilgi  
(Outer Surface  
Phosphate Coated /  
O-RING Information)  
24-32448-70/O  
2x 138\*2,1 FPM  
2x 144\*4 FPM



**Silindir Kit**  
(Assembly Set)

89-124500-32-STD  
89-71544-STD



**Piston - Blok Montaj**  
Yüksekliği  
(Piston - Block  
Assembly Height)



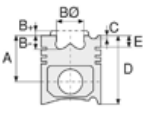


MAN - Ø 128

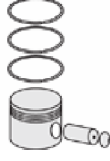
87-71544-STD A



**Motor Özellikleri**  
(Engine Specifications)



**Piston Ölçüleri**  
(Piston Dimensions)



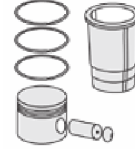
**Piston Parça No**  
(Piston Part No)



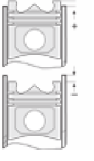
**Segman Seti**  
(Ring Set)



**Silindir Gömleği**  
(Liner)

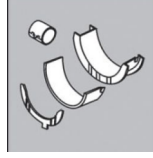


**Silindir Kit**  
(Assembly Set)



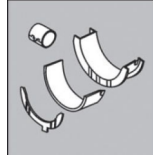
**Piston - Blok Montaj**  
**Yüksekliği**  
(Piston - Block  
Assembly Height)

**Ana Yatak**  
(Main Bearing)



H993/6 STD

**Kol Yatak**  
(Connecting Rod Bearing)

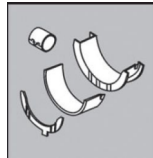


71-3638 STD

71-3289/2 STD

71-2965 STD

**Eksantrik Yatak**  
(Camshaft Bearing)



N110/6L STD

**Kol Burcu**  
(Small End Bushing)



55-2862 SEMI

**Sil. Kapak. Conta**  
(Cylinder Head Gasket)



30-026235-10





MAN - Ø 128

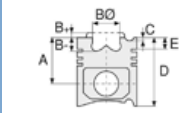
87-71545-STD A



**Motor Özellikleri**  
(Engine Specifications)

İmalatçı (Manufacturer):  
MAN  
Çap (Diameter): Ø 128  
FM Grup No: 5471

**D2842 LE202**  
12 Sil. Dizel 21930cc  
446-587 KW (607-798 PS)  
Marin, Endüstriyel  
(Marine, Industrial)  
1997....



**Piston Ölçüleri**  
(Piston Dimensions)

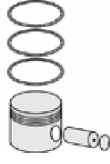
A : 81.250  
B- : 27.100  
BØ : 80.200  
C1 : 1.300  
D : 130.000  
E : 18.800

Pim: 46 x 105



**Piston Özellikleri**  
(Piston Features)

Segman Taşıyıcı  
(Ring Carrier)  
Yağ Püskürtme Oyuğu  
(Oil Jet Cut-out)  
Burçlu Piston  
(Bushing Piston)  
Gözarası Konik  
(Conical Eye Gap)



**Piston Parça No**  
(Piston Part No)

87-124500-72  
87-71545-STD A



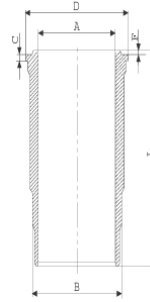
**Segman Seti**  
(Ring Set)

06-124500-20-STD  
4.000 CK KV4  
3.000 GOE  
4.000 CR GOE  
Goetze® LKZ-Ring® /  
Yağ Segmanı Matkap  
Delik (Oil Ring Drill Hole)

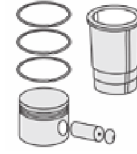


**Silindir Gömleği**  
(Liner)

14-458210-00-WH  
B : 144.500  
L : 253.000  
D : 153.800  
C : 10.050  
F : 1.000

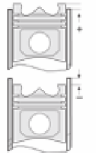


Dış Yüzeyi Fosfat Kaplı /  
O-RING Bilgi  
(Outer Surface  
Phosphate Coated /  
O-RING Information)  
24-32448-70/O  
2x 138\*2,1 FPM  
2x 144\*4 FPM



**Silindir Kit**  
(Assembly Set)

89-124500-72-STD  
89-71545-STD A



**Piston - Blok Montaj**  
Yüksekliği  
(Piston - Block  
Assembly Height)



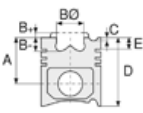


MAN - Ø 128

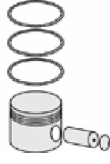
87-71545-STD A



**Motor Özellikleri**  
(Engine Specifications)



**Piston Ölçüleri**  
(Piston Dimensions)



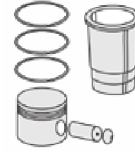
**Piston Parça No**  
(Piston Part No)



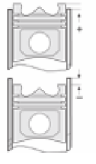
**Segman Seti**  
(Ring Set)



**Silindir Gömleği**  
(Liner)

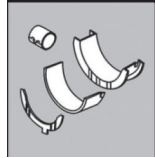


**Silindir Kit**  
(Assembly Set)



**Piston - Blok Montaj**  
**Yüksekliği**  
(Piston - Block  
Assembly Height)

**KOL YATAK**  
(ARM BED)

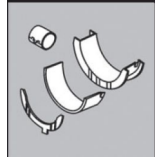


71-3638 STD

71-3289/2 STD

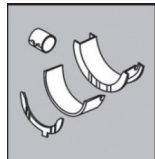
71-2965 STD

**EKSANTRİK YATAK**  
(ECCENTRIC BEARING)



N110/7 STD

**KOL BURCU**  
(SMALL END BUSH)



55-2862 SEMI

**SİL. KAPAK. CONTA**  
(CYLINDER HEAD GASKET)



30-026235-10





MAN - Ø 128

87-71573-STDB



**Motor Özellikleri**  
(Engine Specifications)

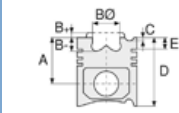
İmalatçı (Manufacturer):  
MAN  
Çap (Diameter): Ø 128  
FM Grup No: 5457

**D2840.LXE, LYE**  
10 Sil. Dizel 18270cc  
603 KW(820 PS) 13,5:1  
TURBO, LLK  
Endüstriyel, Marin  
(Industrial, Marine)  
1987 - 1990

**D2842.LXE, LYE**  
12 Sil. Dizel 21930cc  
735 Kw(1000 PS) 13,5:1  
TURBO, LLK  
Endüstriyel, Marin  
(Industrial, Marine)  
1987 - 1990

**D2848.LXE**  
8 Sil. Dizel 14620cc  
500 KW(680 PS) 13,5:1  
TURBO, LLK  
Endüstriyel, Marin  
(Industrial, Marine)  
1987 - 1990

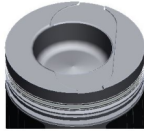
**D2848.LYE**  
8 Sil. Dizel 14618cc  
500 KW(680 PS) 13,5:1  
TURBO, LLK  
Endüstriyel, Marin  
(Industrial, Marine)  
1987 - 1990



**Piston Ölçüleri**  
(Piston Dimensions)

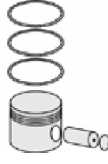
A : 81.300  
B - : 32.000  
BØ : 72.900  
BX : 2.000  
C1 : 1.200  
D : 130.300  
E : 19.000

Pim: 46 x 105



**Piston Özellikleri**  
(Piston Features)

Segman Taşıyıcı  
(Ring Carrier)  
Yağ Püskürtme Oyuğu  
(Oil Jet Cut-out)



**Piston Parça No**  
(Piston Part No)

87-283100-92  
87-71573-STDB



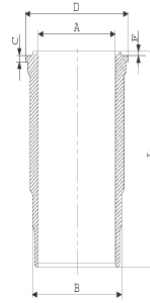
**Segman Seti**  
(Ring Set)

06-283100-40-STD  
3.500 CK KV4  
3.000 STD  
5.000 CR STD



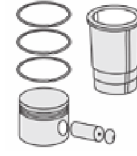
**Silindir Gömleği**  
(Liner)

14-458210-00-WH  
B : 144.500  
L : 253.000  
D : 153.800  
C : 10.050  
F : 1.000



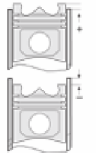
Dış Yüzeyi Fosfat Kaplı /  
O-RING Bilgi  
(Outer Surface  
Phosphate Coated /  
O-RING Information)  
24-32448-70/O  
2x 138\*2,1 FPM  
2x 144\*4 FPM

14-458210-00-WH  
Dış Yüzeyi Fosfat Kaplı /  
O-RING Bilgi  
(Outer Surface  
Phosphate Coated /  
O-RING Information)  
24-32448-70/O  
2x 138\*2,1 FPM  
2x 144\*4 FPM



**Silindir Kit**  
(Assembly Set)

89-283100-92-STD  
89-71573-STDB



**Piston - Blok Montaj**  
Yüksekliği  
(Piston - Block  
Assembly Height)

+0,01 / +0,38



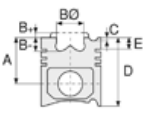


MAN - Ø 128

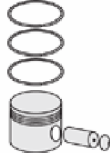
87-71573-STDB



**Motor Özellikleri**  
(Engine Specifications)



**Piston Ölçüleri**  
(Piston Dimensions)



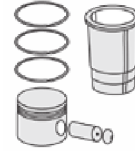
**Piston Parça No**  
(Piston Part No)



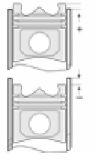
**Segman Seti**  
(Ring Set)



**Silindir Gömleği**  
(Liner)

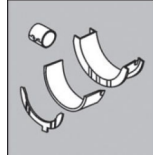


**Silindir Kit**  
(Assembly Set)



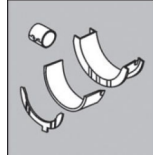
**Piston - Blok Montaj**  
**Yüksekliği**  
(Piston - Block  
Assembly Height)

**ANA YATAK**  
(MAIN BEARING)



H993/6 STD

**KOL YATAK**  
(ARM BED)

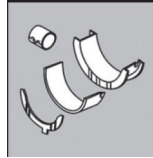


71-3638 STD

71-3289/2 STD

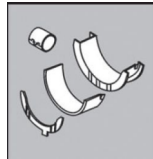
71-2965 STD

**EKSANTRİK YATAK**  
(ECCENTRIC BEARING)



N110/6L STD

**KOL BURCU**  
(SMALL END BUSH)



55-2862 SEMI

**SİL. KAPAK. CONTA**  
(CYLINDER HEAD GASKET)



30-026235-10





MAN - Ø 128

87-71574-STDB



**Motor Özellikleri**  
(Engine Specifications)

İmalatçı (Manufacturer):  
MAN  
Çap (Diameter): Ø 128  
FM Grup No: 5423

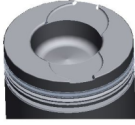
**D 2866 K/KF/KFZ/  
LFO4,07,08,29/LFZ**

6 Sil. Dizel 11967cc  
215/265 Kw  
(292/360 PS) 15:1  
Turbo Intercooled  
19.291, 19.292, 19.331,  
19.332 F, 19.361,  
19.361 FLS, 19.362 F,  
19.422, 22.230, 22.331,  
22.332, 22.360, 22.361,  
22.362, 24.292, 24.362,  
32.361, 322, 33.361, 332,  
34.291, 34.331, 362, 363  
1983....

**Piston Ölçüleri**  
(Piston Dimensions)

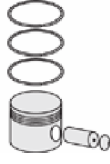
A : 89.800  
B - : 32.200  
BØ : 69.600  
BX : 2.000  
C1 : 2.300  
D : 141.800  
E : 18.800

Pim: 46 x 105



**Piston Özellikleri**  
(Piston Features)

Segman Taşıyıcı  
(Ring Carrier)  
Yağ Püskürtme Oyuğu  
(Oil Jet Cut-out)  
Gözarası Konik  
(Conical Eye Gap)



**Piston Parça No**  
(Piston Part No)

87-283100-33  
87-71574-STD1B  
0,20 mm Kısa (Short)  
  
87-283100-34  
87-71574-STD2B  
0,40 mm Kısa (Short)  
  
87-283100-32  
87-71574-STDB



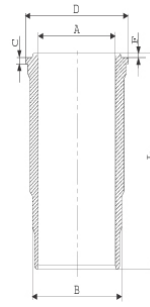
**Segman Seti**  
(Ring Set)

06-283100-40-STD  
3.500 CR KV4  
3.000 STD  
5.000 CR STD

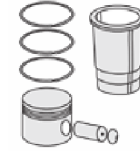


**Silindir Gömleği**  
(Liner)

14-452920-00-WH  
B : 144.500  
L : 270.000  
D : 153.800  
C : 10.070  
F : 1.000

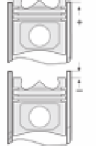


O-RING Bilgi  
(O-RING Information)  
24-32448-70/O  
2x 138\*2,1 FPM  
2x 144\*4 FPM



**Silindir Kit**  
(Assembly Set)

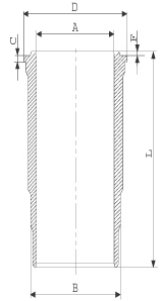
89-283100-32-STD  
89-71574-STDB



**Piston - Blok Montaj**  
Yüksekliği  
(Piston - Block  
Assembly Height)

0/+0,33

14-452930-00-WH  
B : 144.500  
L : 270.000  
D : 153.800  
C : 10.570  
F : 1.000



Flanş 0,50mm Farklı  
(Flange 0,50mm  
Different)





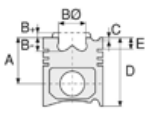


MAN - Ø 128

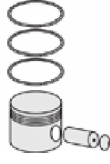
87-71574-STDB



**Motor Özellikleri**  
(Engine Specifications)



**Piston Ölçüleri**  
(Piston Dimensions)



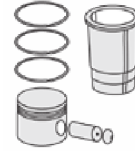
**Piston Parça No**  
(Piston Part No)



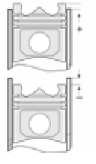
**Segman Seti**  
(Ring Set)



**Silindir Gömleği**  
(Liner)

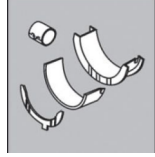


**Silindir Kit**  
(Assembly Set)



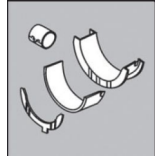
**Piston - Blok Montaj**  
**Yüksekliği**  
(Piston - Block  
Assembly Height)

**ANA YATAK**  
(MAIN BEARING)



H992/7 STD

**KOL YATAK**  
(ARM BED)

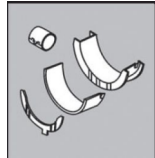


71-3637 STD

71-2965 STD

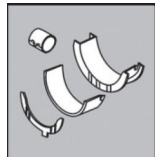
71-3561/6 STD

**EKSANTRİK YATAK**  
(ECCENTRIC BEARING)



N109/7L STD

**KOL BURCU**  
(SMALL END BUSH)



55-2862 SEMI

**SİL. KAPAK. CONTA**  
(CYLINDER HEAD GASKET)

30-026235-10

AH5450

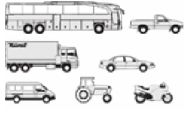
BG850





MAN - Ø 128

87-71575-STDB



**Motor Özellikleri**  
(Engine Specifications)

İmalatçı (Manufacturer):  
MAN  
Çap (Diameter): Ø 128  
FM Grup No: 5421

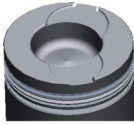
**D 2866 UH/UM/  
OH/F/FR**

6 Sil. Dizel 11967cc  
176 Kw (239 PS) 17,5:1  
16.242, 19.242, 24.242,  
25.242, 26.242, 33.242,  
Endüstriyel (Industrial)  
1983....

**Piston Ölçüleri**  
(Piston Dimensions)

A : 89.870  
B- : 31.070  
BØ : 66.600  
BX : 2.000  
D : 141.870  
E : 18.500

Pim: 46 x 105



**Piston Özellikleri**  
(Piston Features)

Segman Taşıyıcı  
(Ring Carrier)  
Gözarası Konik  
(Conical Eye Gap)



**Piston Parça No**  
(Piston Part No)

87-283100-42  
87-71575-STDB



**Segman Seti**  
(Ring Set)

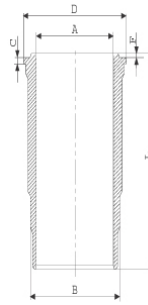
06-283100-40-STD

3.500 CR KV4  
3.000 STD  
5.000 CR STD

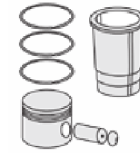


**Silindir Gömleği**  
(Liner)

14-452920-00-WH  
B : 144.500  
L : 270.000  
D : 153.800  
C : 10.070  
F : 1.000

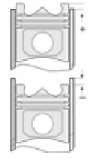


O-RING Bilgi  
(O-RING Information)  
24-32448-70/O  
2x 138\*2,1 FPM  
2x 144\*4 FPM



**Silindir Kit**  
(Assembly Set)

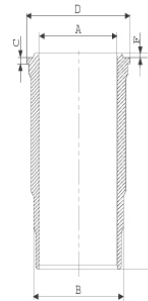
89-283100-42-STD  
89-71575-STDB



**Piston - Blok Montaj**  
Yüksekliği  
(Piston - Block  
Assembly Height)

0 / + 0,20

14-452930-00-WH  
B : 144.500  
L : 270.000  
D : 153.800  
C : 10.570  
F : 1.000



Flanş 0,50mm Farklı  
(Flange 0,50mm  
Different)



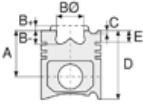


MAN - Ø 128

87-71575-STD B



**Motor Özellikleri**  
(Engine Specifications)



**Piston Ölçüleri**  
(Piston Dimensions)



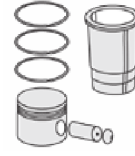
**Piston Parça No**  
(Piston Part No)



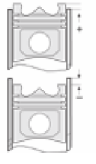
**Segman Seti**  
(Ring Set)



**Silindir Gömleği**  
(Liner)

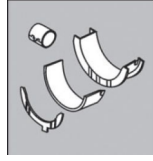


**Silindir Kit**  
(Assembly Set)



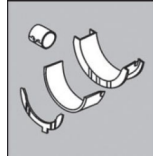
**Piston - Blok Montaj**  
Yüksekliği  
(Piston - Block  
Assembly Height)

**ANA YATAK**  
(MAIN BEARING)



H992/7 STD

**KOL YATAK**  
(ARM BED)

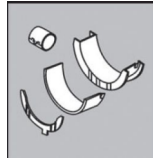


71-3637 STD

71-2965 STD

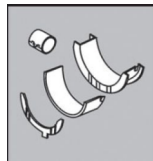
71-3561/6 STD

**EKSANTRİK YATAK**  
(ECCENTRIC BEARING)



N109/7L STD

**KOL BURCU**  
(SMALL END BUSH)



55-2862 SEMI

**SİL. KAPAK. CONTA**  
(CYLINDER HEAD GASKET)



30-026235-10





MAN - Ø 128

87-71576-STDB



**Motor Özellikleri**  
(Engine Specifications)

İmalatçı (Manufacturer):  
MAN  
Çap (Diameter): Ø 128  
FM Grup No: 5424

**D 2865 LUH**  
**02/03/05 EURO1**

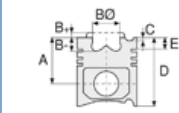
5 Sil. Dizel 9972cc  
221 Kw (300 PS) 16:1  
Turbo Intercooled  
19.361 FLS, 19.362 F,  
19.362 FS, 19.422,  
24.362, 25.362  
1987....

**D 2865 LF 02/03/04/  
06/10/15, LOH, LU01/  
02/03/04/06/22**

5 Sil. Dizel 9972cc  
221 Kw (300 PS) 16:1  
Turbo Intercooled  
19.361 FLS, 19.362 F,  
19.362 FS, 19.422,  
24.362, 25.362, S2000  
1987....

**D 2866 LF 01/02/03/  
04/05/06/07/09/  
15/22, LOH03**

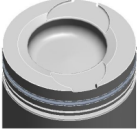
6 Sil. Dizel 11967cc  
198/324 Kw  
(269/441 PS) 16:1  
Turbo Intercooled  
19.361 FLS, 19.362 F,  
19.362 FS, 19.422,  
24.362, 25.362  
1987....



**Piston Ölçüleri**  
(Piston Dimensions)

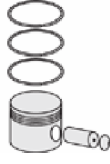
A : 89.750  
B - : 24.400  
BØ : 75.600  
BX : 2.000  
C1 : 2.050  
D : 141.750  
E : 18.800

Pim: 46 x 105



**Piston Özellikleri**  
(Piston Features)

Segman Taşıyıcı  
(Ring Carrier)  
Yağ Püskürtme Oyuğu  
(Oil Jet Cut-out)  
Gözarası Konik  
(Conical Eye Gap)



**Piston Parça No**  
(Piston Part No)

87-283100-83  
87-71576-STD1B  
0,20 mm Kısa (Short)  
  
87-283100-84  
87-71576-STD2B  
0,40 mm Kısa (Short)  
  
87-283100-82  
87-71576-STDB



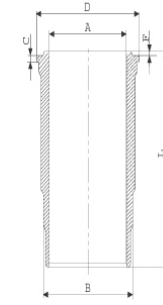
**Segman Seti**  
(Ring Set)

06-283100-40-STD  
  
3.500 CR KV4  
3.000 STD STD  
5.000 CR STD



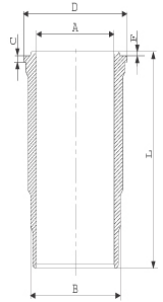
**Silindir Gömleği**  
(Liner)

14-452920-00-WH  
B : 144.500  
L : 270.000  
D : 153.800  
C : 10.070  
F : 1.000

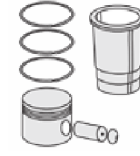


O-RING Bilgi  
(O-RING Information)  
24-32448-70/O  
2x 138\*2,1 FPM  
2x 144\*4 FPM

14-452930-00-WH  
B : 144.500  
L : 270.000  
D : 153.800  
C : 10.570  
F : 1.000

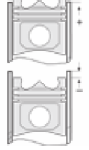


Flanş 0,50mm Farklı  
(Flange 0,50mm  
Different)



**Silindir Kit**  
(Assembly Set)

89-283100-82-STD  
89-71576-STDB



**Piston - Blok Montaj**  
**Yüksekliği**  
(Piston - Block  
Assembly Height)

+ 0,01 / + 0,038



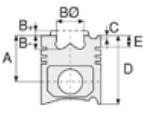


MAN - Ø 128

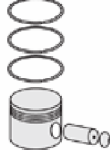
87-71576-STD B



**Motor Özellikleri**  
(Engine Specifications)



**Piston Ölçüleri**  
(Piston Dimensions)



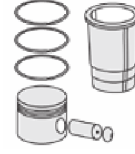
**Piston Parça No**  
(Piston Part No)



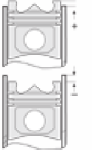
**Segman Seti**  
(Ring Set)



**Silindir Gömleği**  
(Liner)

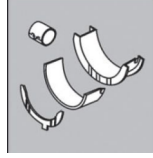


**Silindir Kit**  
(Assembly Set)



**Piston - Blok Montaj**  
**Yüksekliği**  
(Piston - Block  
Assembly Height)

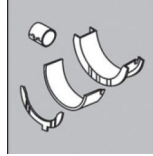
**ANA YATAK**  
(MAIN BEARING)



H992/6 STD

H992/7 STD

**KOL YATAK**  
(ARM BED)

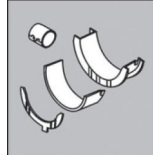


71-3637 STD

71-2965 STD

71-3561/6 STD

**EKSANTRİK YATAK**  
(ECCENTRIC BEARING)



N109/7L STD

**SİL. KAPAK. CONTA**  
(CYLINDER HEAD GASKET)



30-026235-10

30-026235-30

AH5450



**FEDERAL-MOGUL**  
**POWERTRAIN**  
TÜRKİYE



MAN - Ø 128

87-71577-STD A



**Motor Özellikleri**  
(Engine Specifications)

İmalatçı (Manufacturer):  
MAN  
Çap (Diameter): Ø 128  
FM Grup No: 5427  
  
**D 2876 LF 02, LOH  
01 EURO2**  
6 Sil. Dizel 12817cc  
338 Kw (460 PS) 17,1:1  
Turbo Intercooled 12 Valve  
19.462 FLS, 19.463 FLT,  
F 2000  
1995....

**Piston Ölçüleri**  
(Piston Dimensions)

A : 79.250  
B - : 23.100  
BØ : 81.280  
BX : 2.000  
C1 : 2.100  
D : 134.250  
E : 18.700

Pim: 50 x 107



**Piston Özellikleri**  
(Piston Features)

Segman Taşıyıcı  
(Ring Carrier)  
Yağ Püskürtme Oyuğu  
(Oil Jet Cut-out)  
Gözarası Konik  
(Conical Eye Gap)

**Piston Parça No**  
(Piston Part No)

87-124500-13  
87-71577-STD1C  
0,20 mm Kısa (Short)  
  
87-124500-14  
87-71577-STD2C  
0,40 mm Kısa (Short)  
  
87-124500-12  
87-71577-STD C

87-104300-02  
87-71577-STD A

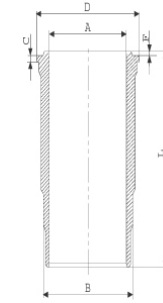
**Segman Seti**  
(Ring Set)

06-124500-20-STD  
4.000 CK KV4  
3.000 GOE  
4.000 CR GOE  
  
Goetze® LKZ-Ring® /  
Yağ Segmanı Matkap  
Delikli (Oil Ring Drill  
Perforated)

06-104300-20-STD  
4.000 CK KV1  
3.000 STD  
4.000 CR STD  
  
Goetze® LKZ-Ring®

**Silindir Gömleği**  
(Liner)

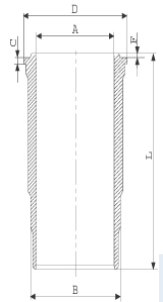
14-452920-00-WH  
B : 144.500  
L : 270.000  
D : 153.800  
C : 10.070  
F : 1.000



O-RING Bilgi  
(O-RING Information)  
24-32448-70/O  
2x 138\*2,1 FPM  
2x 144\*4 FPM

14-452920-00-WH  
O-RING Bilgi  
(O-RING Information)  
24-32448-70/O  
2x 138\*2,1 FPM  
2x 144\*4 FPM

14-452930-00-WH  
B : 144.500  
L : 270.000  
D : 153.800  
C : 10.570  
F : 1.000



Flanş 0,50mm Farklı  
(Flange 0,50mm  
Different)

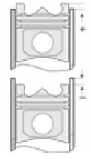
**Silindir Kit**  
(Assembly Set)

89-124500-12-STD  
89-71577-STD C

89-104300-02-STD  
89-71577-STD A

**Piston - Blok Montaj**  
Yüksekliği  
(Piston - Block  
Assembly Height)

+0,01 / +0,33



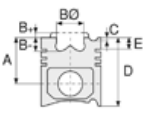


MAN - Ø 128

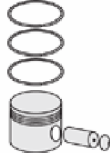
87-71577-STD A



**Motor Özellikleri**  
(Engine Specifications)



**Piston Ölçüleri**  
(Piston Dimensions)



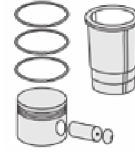
**Piston Parça No**  
(Piston Part No)



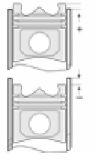
**Segman Seti**  
(Ring Set)



**Silindir Gömleği**  
(Liner)

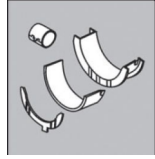


**Silindir Kit**  
(Assembly Set)



**Piston - Blok Montaj**  
Yüksekliği  
(Piston - Block  
Assembly Height)

**Ana Yatak**  
(Main Bearing)

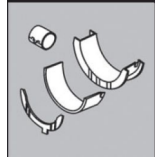


H1239/7 STDH

992/7 STD

H9927 STD

**Kol Yatak**  
(Connecting Rod Bearing)



71-4746 STD

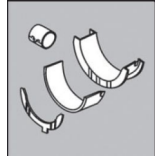
71-3812/6 STD

**Eksantrik Yatak**  
(Camshaft Bearing)



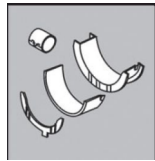
N109/7L STD

**Ay Yatak**  
(Thrust Washer)



A159/4 STD

**Kol Burcu**  
(Small End Bushing)



55-3813 SEMI

55-4832 SEMI

**Sil. Kapak. Conta**  
(Cylinder Head Gasket)



30-026235-30

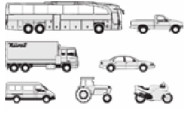
BG850





MAN - Ø 128

87-71578-STDB



**Motor Özellikleri**  
(Engine Specifications)

İmalatçı (Manufacturer):  
MAN  
Çap (Diameter): Ø 128  
FM Grup No: 5428

**D 2866 LOH23,LUH23**  
**EURO3**

6 Sil. Dizel 11967cc  
294 Kw (400 PS) 17:1  
Turbo Intercooled  
F 2000, SG 263 (İhraç  
(Exportation))  
2002....

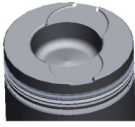
**D 2866 LF13/14/15/  
16/20/34/35 EURO2**

6 Sil. Dizel 11967cc  
213/250 Kw  
(290/340 PS) 17:1  
Turbo Intercooled  
27.314 DFC, 32.310  
1999....

**Piston Ölçüleri**  
(Piston Dimensions)

A : 89.750  
B - : 21.600  
BØ : 81.200  
BX : 2.000  
C1 : 2.050  
D : 141.750  
E : 18.800

Pim: 46 x 105



**Piston Özellikleri**  
(Piston Features)

Segman Taşıyıcı  
(Ring Carrier)  
Yağ Püskürtme Oyuğu  
(Oil Jet Cut-out)  
Gözarası Konik  
(Conical Eye Gap)

**Piston Parça No**  
(Piston Part No)

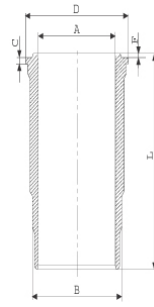
87-283100-74  
87-71578-STD1B  
0,20 mm Kısa (Short)  
  
87-283100-72  
87-71578-STDB

**Segman Seti**  
(Ring Set)

06-283100-40-STD  
3.500 CR KV4  
3.000 STD  
5.000 CR STD

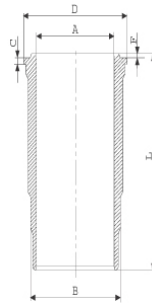
**Silindir Gömleği**  
(Liner)

14-452920-00-WH  
B : 144.500  
L : 270.000  
D : 153.800  
C : 10.070  
F : 1.000



O-RING Bilgi  
(O-RING Information)  
24-32448-70/O  
2x 138\*2,1 FPM  
2x 144\*4 FPM

14-452930-00-WH  
B : 144.500  
L : 270.000  
D : 153.800  
C : 10.570  
F : 1.000



Flanş 0,50mm Farklı  
(Flange 0,50mm  
Different)

**Silindir Kit**  
(Assembly Set)

89-283100-72-STD  
89-71578-STDB

**Piston - Blok Montaj**  
**Yüksekliği**  
(Piston - Block  
Assembly Height)

+0,01 / +0,33





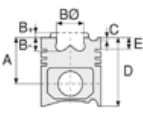


MAN - Ø 128

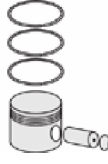
87-71578-STD B



**Motor Özellikleri**  
(Engine Specifications)



**Piston Ölçüleri**  
(Piston Dimensions)



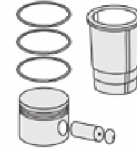
**Piston Parça No**  
(Piston Part No)



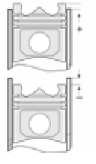
**Segman Seti**  
(Ring Set)



**Silindir Gömleği**  
(Liner)

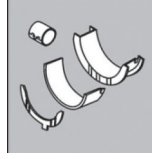


**Silindir Kit**  
(Assembly Set)



**Piston - Blok Montaj**  
Yüksekliği  
(Piston - Block  
Assembly Height)

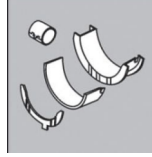
**Ana Yatak**  
(Main Bearing)



H1239/7 STDH

992/7 STD

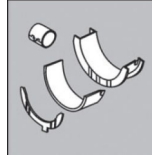
**Kol Yatak**  
(Connecting Rod Bearing)



71-3637 STD

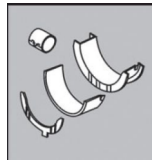
71-2965 STD

**Eksantrik Yatak**  
(Camshaft Bearing)



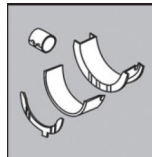
N109/7L STD

**Ay Yatak**  
(Thrust Washer)



A159/4 STD

**Kol Burcu**  
(Small End Bushing)



55-2862 SEMI

**Silindir Kapak Conta**  
(Cylinder Head Gasket)

30-026235-10

AH5450

BG850





MAN - Ø 128

87-71580-STDB



**Motor Özellikleri**  
(Engine Specifications)

İmalatçı (Manufacturer):  
MAN  
Çap (Diameter): Ø 128  
FM Grup No: 5430

**D 2866 LF 26 EURO3**

6 Sil. Dizel 11967cc  
228/301 Kw  
(310/409 PS) 19:1  
Turbo Intercool,  
NEOMAN LOH 34 24 Valf  
18.313, 18.413, 33.362,  
F2000, FORTUNA,  
LION'S COACH OTOBUS,  
TG310, TG410  
1999 - 2006

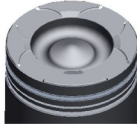
**D 2866 LOH 29**  
**EURO 3**

6 Sil. Dizel 11967cc  
301 KW (410 PS) 19:1  
Turbo Intercooler 24 Valf  
24.310, 24.350, RH413,  
RH414  
2001 - 2006

**Piston Ölçüleri**  
(Piston Dimensions)

A : 89.750  
B- : 22.000  
BØ : 80.000  
C1 : 1.900  
D : 141.750  
E : 18.600

Pim: 46 x 105



**Piston Özellikleri**  
(Piston Features)

Segman Taşıyıcı  
(Ring Carrier)  
Yağ Püskürtme Oyuğu  
(Oil Jet Cut-out)  
Gözarası Konik  
(Conical Eye Gap)

**Piston Parça No**  
(Piston Part No)

87-143800-02  
87-71580-STD

87-143800-33  
87-71580-STD1B  
0,20 mm Kısa (Short)

87-143800-34  
87-71580-STD2B  
0,40 mm Kısa (Short)

87-143800-32  
87-71580-STDB

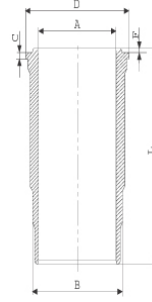
**Segman Seti**  
(Ring Set)

06-143800-40-STD  
4.000 CK KV4  
3.000 CR GOE  
4.000 CR GOE  
Goetze® LKZ-Ring®

06-143800-20-STD  
4.000 CK KV4  
3.000 CR GOE  
4.000 CR GOE  
Goetze® LKZ-Ring®

**Silindir Gömleği**  
(Liner)

14-450500-00-WH  
B : 144.500  
L : 270.000  
D : 153.800  
C : 10.070  
F : 1.000



Dış Yüzeyi Fosfat Kaplı /  
O-RING Bilgi  
(Outer Surface  
Phosphate Coated /  
O-RING Information)  
24-32448-70/O  
2x 138\*2,1 FPM  
2x 144\*4 FPM

14-450500-00-WH  
Dış Yüzeyi Fosfat Kaplı /  
O-RING Bilgi  
(Outer Surface  
Phosphate Coated /  
O-RING Information)  
24-32448-70/O  
2x 138\*2,1 FPM  
2x 144\*4 FPM

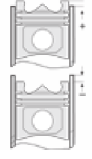
**Silindir Kit**  
(Assembly Set)

89-143800-02-STD  
89-71580-STDD

89-143800-32-STD  
89-71580-STDB

**Piston - Blok Montaj**  
**Yüksekliği**  
(Piston - Block  
Assembly Height)

+0,01 / +0,33



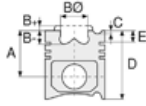


MAN - Ø 128

87-71580-STDB



**Motor Özellikleri**  
(Engine Specifications)



**Piston Ölçüleri**  
(Piston Dimensions)



**Piston Parça No**  
(Piston Part No)

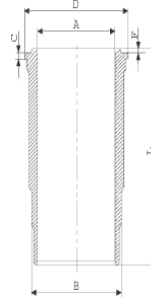


**Segman Seti**  
(Ring Set)

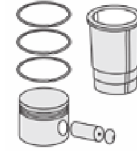


**Silindir Gömleği**  
(Liner)

14-450800-00-WH  
B : 144.500  
L : 270.000  
D : 153.800  
C : 10.070

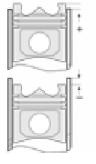


**O-RING Bilgi**  
( O-RING Information)  
24-35048-40/OT  
1x 138\*144,75\*4,6 FPM  
2x 144\*4 FPM 70



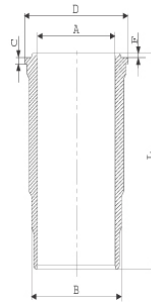
**Silindir Kit**  
(Assembly Set)

89-143800-42-STD  
89-71580-STDC



**Piston - Blok Montaj**  
**Yüksekliği**  
(Piston - Block  
Assembly Height)

14-450970-00-WH  
B : 144.500  
L : 270.000  
D : 153.800  
C : 10.070  
F : 1.000



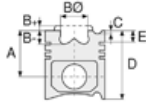
O-RING Kanalı 6mm ,  
Flanş Üstü Faturalı  
(O-RING Channel 6mm ,  
On Flange Posted)

89-143800-52-STD  
89-71580-STDE

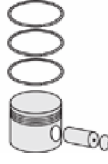




**Motor Özellikleri**  
(Engine Specifications)



**Piston Ölçüleri**  
(Piston Dimensions)



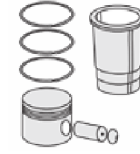
**Piston Parça No**  
(Piston Part No)



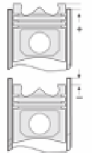
**Segman Seti**  
(Ring Set)



**Silindir Gömleği**  
(Liner)



**Silindir Kit**  
(Assembly Set)



**Piston - Blok Montaj**  
**Yüksekliği**  
(Piston - Block  
Assembly Height)

14-450971-00-WH  
B : 144.500  
L : 270.000  
D : 153.800  
C : 10.070  
F : 1.000

O-RING Bilgi  
( O-RING Information)  
BOĞAZ ALT ÇAPI  
+0,50 MM FARKLI  
ÇALIŞMASI  
(Throat Lower Diameter  
+0.50 Mm Different  
Study)  
24-35048-40/0  
1x 138\*144,75\*4,6 FPM  
2x 144\*4 FPM 70

14-450972-00-WH  
B : 144.500  
L : 270.000  
D : 153.800  
C : 10.070  
F : 1.000

O-RING Bilgi  
( O-RING Information)  
BOĞAZ ALT ÇAPI  
+1,00 MM FARKLI  
ÇALIŞMASI  
(Throat Lower Diameter  
+1.00 Mm Different  
Study)  
24-35048-40/0  
1x 138\*144,75\*4,6 FPM  
2x 144\*4 FPM 70



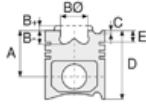


MAN - Ø 128

87-71580-STDB



**Motor Özellikleri**  
(Engine Specifications)



**Piston Ölçüleri**  
(Piston Dimensions)



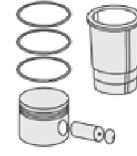
**Piston Parça No**  
(Piston Part No)



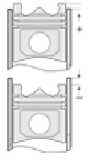
**Segman Seti**  
(Ring Set)



**Silindir Gömleği**  
(Liner)

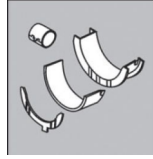


**Silindir Kit**  
(Assembly Set)



**Piston - Blok Montaj**  
**Yüksekliği**  
(Piston - Block  
Assembly Height)

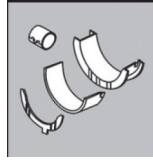
**Ana Yatak**  
(Main Bearing)



H1239/7 STD

H083/7 0.50MM

**Kol Yatak**  
(Connecting Rod Bearing)

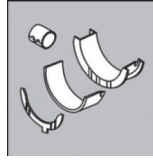


71-3637 STD

71-2965 STD

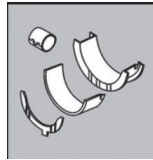
71-3561/6 STD

**Eksantrik Yatak**  
(Camshaft Bearing)



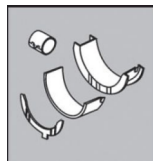
N109/7L STD

**Ay Yatak**  
(Thrust Washer)



A159/4 STD

**Kol Burcu**  
(Small End Bushing)



55-2862 SEMI

**Sil. Kapak. Conta**  
(Cylinder Head Gasket)



BG850





MAN - Ø 128

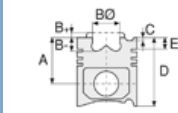
87-71581-STD A



**Motor Özellikleri**  
(Engine Specifications)

İmalatçı (Manufacturer):  
MAN  
Çap (Diameter): Ø 128  
FM Grup No: 5444

**D2866 LF31 EURO II**  
6 Sil. Dizel 11967cc  
301 Kw(409 PS) 16,75:1  
19.414, 23.414 , 24.414,  
26.414, 27.414, 30.414,  
32.414, 33.314, 33.414,  
35.414, 40.414, 41.414,  
42.414, 50.414,  
TGA18.412 FLS  
1997....



**Piston Ölçüleri**  
(Piston Dimensions)

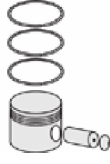
A : 89.750  
B - : 22.500  
BØ : 80.000  
C1 : 1.900  
D : 141.750  
E : 18.600

Pim: 46 x 105



**Piston Özellikleri**  
(Piston Features)

Segman Taşıyıcı  
(Ring Carrier)  
Yağ Püskürtme Oyuğu  
(Oil Jet Cut-out)  
Gözarası Konik  
(Conical Eye Gap)



**Piston Parça No**  
(Piston Part No)

87-104300-23  
87-71581-STD1A  
0,20 mm Kısa (Short)  
87-104300-22  
87-71581-STD A



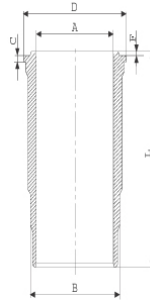
**Segman Seti**  
(Ring Set)

06-104300-20-STD  
4.000 CR KV1  
3.000 STD  
4.000 CR STD  
Goetze® LKZ-Ring®

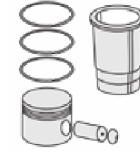


**Silindir Gömleği**  
(Liner)

14-452920-00-WH  
B : 144.500  
L : 270.000  
D : 153.800  
C : 10.070  
F : 1.000

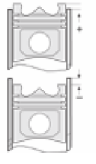


O-RING Bilgi  
(O-RING Information)  
24-32448-70/O  
2x 138\*2,1 FPM  
2x 144\*4 FPM



**Silindir Kit**  
(Assembly Set)

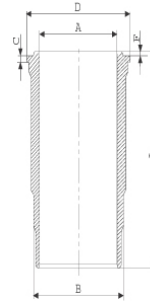
89-104300-22-STD  
89-71581-STD A



**Piston - Blok Montaj**  
Yüksekliği  
(Piston - Block  
Assembly Height)

+0,01 / +0,33

14-452930-00-WH  
B : 144.500  
L : 270.000  
D : 153.800  
C : 10.570  
F : 1.000



Flanş 0,50mm Farklı  
(Flange 0,50mm  
Different)



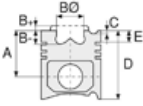


MAN - Ø 128

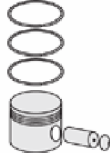
87-71581-STD A



**Motor Özellikleri**  
(Engine Specifications)



**Piston Ölçüleri**  
(Piston Dimensions)



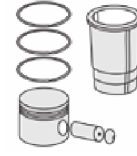
**Piston Parça No**  
(Piston Part No)



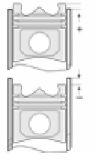
**Segman Seti**  
(Ring Set)



**Silindir Gömleği**  
(Liner)

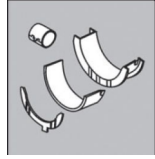


**Silindir Kit**  
(Assembly Set)



**Piston - Blok Montaj**  
Yüksekliği  
(Piston - Block  
Assembly Height)

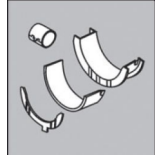
**Ana Yatak**  
(Main Bearing)



H992/7 STD

H1239/7 STD

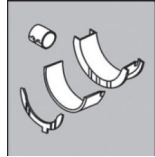
**Kol Yatak**  
(Connecting Rod Bearing)



71-3637 STD

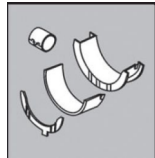
71-2965 STD

**Eksantrik Yatak**  
(Camshaft Bearing)



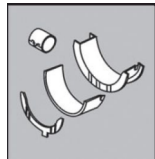
N109/7L STD

**Ay Yatak**  
(Thrust Washer)



A159/4 STD

**Kol Burcu**  
(Small End Bushing)



55-2862 SEMI

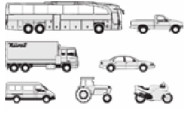
55-4747 SEMI

**Sil. Kapak. Conta**  
(Cylinder Head Gasket)



BG850





**Motor Özellikleri**  
(Engine Specifications)

İmalatçı (Manufacturer):  
MAN  
Çap (Diameter): Ø 128  
FM Grup No: 5462

**D 2876 LF 12 EURO**  
**3 C.RAİL**

6 Sil. Dizel 12816cc  
480 PS (353 KW) 18:1  
Starliner, TGA 18.480,  
TGA 24.480, TGA 26.480,  
TGA 28.480, TGA 33.480,  
TGA 35.480, TGA 37.480,  
TGA 40.480, TGA 41.480  
2002....

**Piston Ölçüleri**  
(Piston Dimensions)

A : 79.250  
B- : 23.750  
BØ : 76.160  
C1 : 1.900  
D : 134.250  
E : 14.500

Pim: 52 x 103



**Piston Özellikleri**  
(Piston Features)

Segman Taşıyıcı  
(Ring Carrier)  
Yağ Püskürtme Oyuğu  
(Oil Jet Cut-out)  
Gözarası Konik  
(Conical Eye Gap)



**Piston Parça No**  
(Piston Part No)

87-143800-72  
87-71584-STD A  
87-143800-73  
87-71584STD1A  
0,20 mm Kısa (Short)



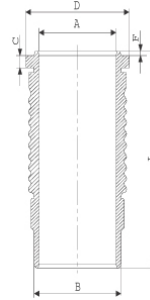
**Segman Seti**  
(Ring Set)

06-143800-20-STD  
4.000  CK KV4  
3.000  CR GOE  
4.000  CR GOE  
Goetze® LKZ-Ring®



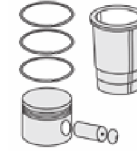
**Silindir Gömleği**  
(Liner)

14-670050-00-WH  
B : 144.500  
L : 268.000  
D : 153.800  
C : 8.070



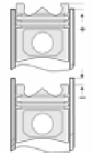
O-RING Bilgi  
(O-RING Information)  
24-35045-50/O  
1x 138\*144,75\*4,6 FPM  
2x 144\*4 FPM

14-670050-00-WH  
O-RING Bilgi  
(O-RING Information)  
24-35045-50/O  
1x 138\*144,75\*4,6 FPM  
2x 144\*4 FPM



**Silindir Kit**  
(Assembly Set)

89-143800-72-STD  
89-71584-STD A



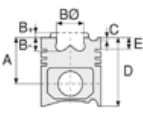
**Piston - Blok Montaj**  
**Yüksekliği**  
(Piston - Block  
Assembly Height)



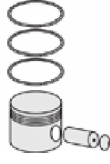




**Motor Özellikleri**  
(Engine Specifications)



**Piston Ölçüleri**  
(Piston Dimensions)



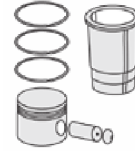
**Piston Parça No**  
(Piston Part No)



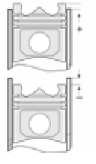
**Segman Seti**  
(Ring Set)



**Silindir Gömleği**  
(Liner)



**Silindir Kit**  
(Assembly Set)



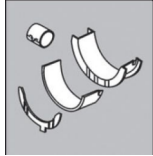
**Piston - Blok Montaj**  
**Yüksekliği**  
(Piston - Block  
Assembly Height)

**Ana Yatak**  
(Main Bearing)



H1239/7 STD

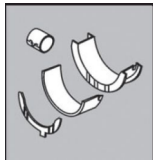
**Kol Yatak**  
(Connecting Rod Bearing)



71-4746 STD

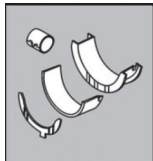
71-3812/6 STD

**Eksantrik Yatak**  
(Camshaft Bearing)



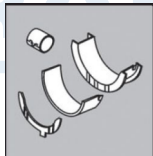
N109/7L STD

**Ay Yatak**  
(Thrust Washer)



A159/4 STD

**Kol Burcu**  
(Small End Bushing)



55-3813 SEMI

55-4832 SEMI (KONİK)





MAN - Ø 128

87-72950-STD A



**Motor Özellikleri**  
(Engine Specifications)

İmalatçı (Manufacturer):  
MAN  
Çap (Diameter): Ø 128  
FM Grup No: 5481

**D 2866 LE 201**  
6 Sil. Dizel 11967cc  
249/354 Kw(339/481 Ps)  
Marin, Sabit Motor  
(Marine, Stationary Engine)

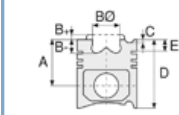
**D 2866 LE 202**  
6 Sil. Dizel 11967cc  
250/327 Kw(340/345 Ps)  
Marin, Sabit Motor  
(Marine, Stationary Engine)

**D 2866 LE 203**  
6 Sil. Dizel 11967cc  
327/364 Kw(445/495 Ps)  
Marin, Sabit Motor  
(Marine, Stationary Engine)

**D 2866 LE 211**  
6 Sil. Dizel 11967cc  
230/292 Kw(313/397 Ps)  
Marin, Sabit Motor  
(Marine, Stationary Engine)

**D 2866 LE 401**  
6 Sil. Dizel 11967cc  
441 Kw(600 Ps)  
Marin, Sabit Motor  
(Marine, Stationary Engine)

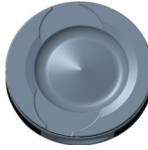
**D 2866 LE 403**  
6 Sil. Dizel 11967cc  
368 Kw(500 Ps)  
Marin, Sabit Motor  
(Marine, Stationary Engine)



**Piston Ölçüleri**  
(Piston Dimensions)

A : 89.750  
B - : 23.790  
BØ : 81.100  
BX : 2.100  
C1 : 1.900  
D : 141.750  
E : 18.700

Pim: 46 x 105



**Piston Özellikleri**  
(Piston Features)

Segman Taşıyıcı  
(Ring Carrier)  
Yağ Püskürtme Oyuğu  
(Oil Jet Cut-out)  
Burçlu Piston  
(Bushing Piston)  
Gözarası Konik  
(Conical Eye Gap)



**Piston Parça No**  
(Piston Part No)

87-124500-92  
87-72950-STD A



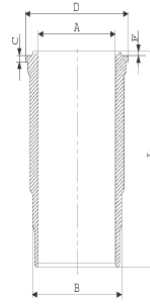
**Segman Seti**  
(Ring Set)

06-124500-20-STD  
4.000 CK KV4  
3.000 GOE  
4.000 CR GOE  
Goetze® LKZ-Ring® /  
Yağ Segmanı Matkap  
Delikli (Oil Ring Drill  
Perforated)



**Silindir Gömleği**  
(Liner)

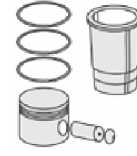
14-452920-00-WH  
B : 144.500  
L : 270.000  
D : 153.800  
C : 10.070  
F : 1.000



O-RING Bilgi  
(O-RING Information)  
24-32448-70/O  
2x 138\*2,1 FPM  
2x 144\*4 FPM

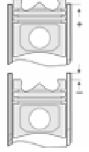
14-451260-00-WH  
B : 144.500  
L : 270.000  
D : 153.800  
C : 10.070  
F : 1.000

Flanş / O-RING Altı  
0,7 mm Artırılmış.  
(Flange / O-RING Bottom  
Increased by 0,7 mm.)



**Silindir Kit**  
(Assembly Set)

89-124500-92-STD  
89-72950 STD A



**Piston - Blok Montaj**  
Yüksekliği  
(Piston - Block  
Assembly Height)





MAN - Ø 128

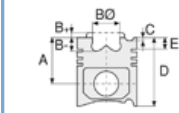
87-72951-STD



**Motor Özellikleri**  
(Engine Specifications)

İmalatçı (Manufacturer):  
MAN  
Çap (Diameter): Ø 128  
FM Grup No: 5491

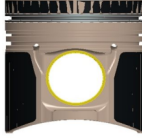
**D 2866 LE 201**  
6 Sil. Dizel 12817cc 483  
Marin (Marine)  
1969....



**Piston Ölçüleri**  
(Piston Dimensions)

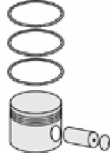
A : 79.250  
B - : 23.790  
BØ : 85.100  
BX : 2.100  
C1 : 1.900  
D : 134.250  
E : 17.600

Pim: 50 x 103



**Piston Özellikleri**  
(Piston Features)

Segman Taşıyıcı  
(Ring Carrier)  
Soğutma Kanallı  
(Coolin Gallery)  
Yağ Püskürtme Oyuğu  
(Oil Jet Cut-out)  
Burçlu Piston  
(Bushing Piston)  
Gözarası Konik  
(Conical Eye Gap)



**Piston Parça No**  
(Piston Part No)

87-143800-82  
87-72951-STD  
87-143800-83  
87-72951-STD1  
0,20 mm Kısa (Short)  
87-143800-84  
87-72951-STD2  
0,60 mm Kısa (Short)



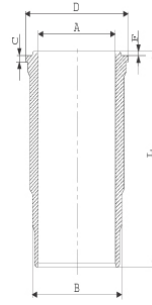
**Segman Seti**  
(Ring Set)

06-143800-20-STD  
4.000 CK Kv4  
3.000 CR GOE  
4.000 CR GOE  
Goetze® LKZ-Ring®

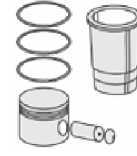


**Silindir Gömleği**  
(Liner)

14-450500-00-WH  
B : 144.500  
L : 270.000  
D : 153.800  
C : 10.070  
F : 1.000

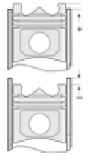


Dış Yüzeyi Fosfat Kaplı /  
O-RING Bilgi  
(Outer Surface  
Phosphate Coated /  
O-RING Information)  
24-32448-70/O  
2x 138\*2,1 FPM  
2x 144\*4 FPM



**Silindir Kit**  
(Assembly Set)

89-143800-82-STD  
89-72951-STD



**Piston - Blok Montaj**  
Yüksekliği  
(Piston - Block  
Assembly Height)



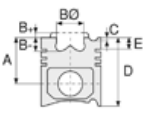


MAN - Ø 128

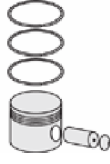
87-72951-STD



**Motor Özellikleri**  
(Engine Specifications)



**Piston Ölçüleri**  
(Piston Dimensions)



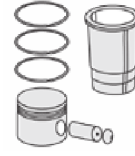
**Piston Parça No**  
(Piston Part No)



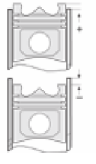
**Segman Seti**  
(Ring Set)



**Silindir Gömleği**  
(Liner)



**Silindir Kit**  
(Assembly Set)



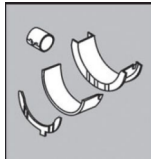
**Piston - Blok Montaj**  
**Yüksekliği**  
(Piston - Block  
Assembly Height)

**Ana Yatak**  
(Main Bearing)



H1239/7 STD

**Kol Yatak**  
(Connecting Rod Bearing)

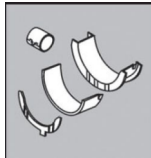


71-2965 STD

71-3561/6 STD

71-3637 STD

**Eksantrik Yatak**  
(Camshaft Bearing)



N109/7L STD

**Kol Burcu**  
(Small End Bushing)



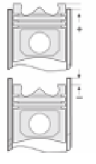
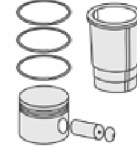
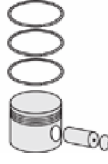
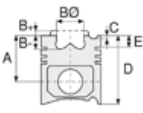
55-2862 SEMI





MAN - Ø 128

87-72952-STD



**Motor Özellikleri**  
(Engine Specifications)

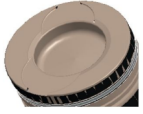
İmalatçı (Manufacturer):  
MAN  
Çap (Diameter): Ø 128  
FM Grup No: 54005

**D2842 LE 602**  
12 Sil. Dizel 21930cc  
588 KW(800 PS)  
15,5:1 V 12  
Lokomotif, Jeneratör  
(Locomotive, Generator)  
1969....

**Piston Ölçüleri**  
(Piston Dimensions)

A : 81.300  
B- : 22.650  
BØ : 73.000  
BX : 2.000  
C1 : 1.250  
D : 130.300  
E : 18.750

Pim: 46 x 105



**Piston Özellikleri**  
(Piston Features)

Segman Taşıyıcı  
(Ring Carrier)  
Soğutma Kanallı  
(Coolin Gallery)  
Yağ Püskürtme Oyuğu  
(Oil Jet Cut-out)  
Burçlu Piston  
(Bushing Piston)  
Gözarası Konik  
(Conical Eye Gap)

**Piston Parça No**  
(Piston Part No)

87-124500-43  
87-72952-STD

**Segman Seti**  
(Ring Set)

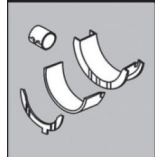
06-124500-20-STD  
4.000 CK KV4  
3.000 GOE  
4.000 CR GOE  
Goetze® LKZ-Ring® /  
Yağ Segmanı Matkap  
Delik (Oil Ring Drill Hole)

**Silindir Gömleği**  
(Liner)

**Silindir Kit**  
(Assembly Set)

**Piston - Blok Montaj**  
Yüksekliği  
(Piston - Block  
Assembly Height)

**Kol Yatak**  
(Connecting Rod Bearing)

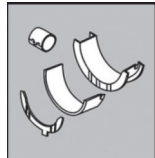


71-2965-STD

71-3289/2-STD

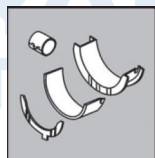
71-3638-STD

**Eksantrik Yatak**  
(Camshaft Bearing)



N110/7 STD

**Kol Burcu**  
(Small End Bushing)



55-2862 SEMI

