



NISSAN-RENAULT - Ø 76

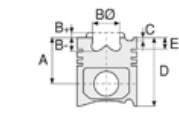
87-71953-STD



Motor Özellikleri
(Engine Specifications)

İmalatçı (Manufacturer):
NISSAN-RENAULT
Çap (Diameter): Ø 76
FM Grup No: 2780

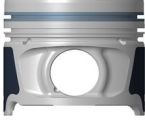
K9K 636 Euro 5
4 Sil. Dizel 1461cc 81
Kw-110 PS NISSAN JUKE
(F15) 1.5 dCi,
NISSAN QASHQAI
II SUV (J11, J1, RENAULT
KANGOO, RENAULT
MEGANE III Hatchback
2009...



Piston Ölçüleri
(Piston Dimensions)

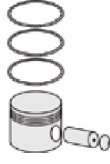
A : 41.751
B - : 12.860
B0 : 47.000
C1 : 0.430
C2 : 0.250
D : 66.000
E : 9.000

Pim : 26 x 60



Piston Özellikleri
(Piston Features)

Segman Taşıyıcı
(Ring Carrier)
Soğutma Kanallı
(Cooling Gallery)
Yağ Püskürtme Oyuğu
(Oil Jet Cut-Out)
Gözarası Konik
(Conical Eye Gap)



Piston Parça No
(Piston Part No)

87-123400-24
87-71953-STD

87-123407-24
87-71953-0,50



Segman Seti
(Ring Set)

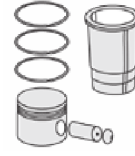
06-123400-10-STD
06-123407-10-0,50 mm
06-123411-10-1,00 mm

2.000 CKP KVI
2.000 P GOE
2.500 CRP GOE

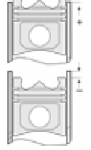
Goetze® LKZ-Ring®
Yağ Segmanı Matkap Delik
(Oil Ring Drill Hole)



Silindir Gömleği
(Liner)

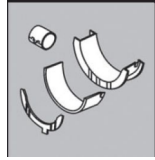


Silindir Kit
(Assembly Set)



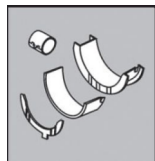
Piston - Blok Montaj
Yüksekliği
(Piston - Block
Assembly Height)

Ana Yatak
(Main Bearing)



H1065/5 STD

Kol Yatak
(Connecting Rod Bearing)



71-4243/4 STD

Sil. Kapak. Conta
(Cylinder Head Gasket)



CH7260





NISSAN- CITROEN - Ø 77

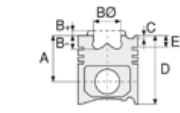
87-71785-STD



Motor Özellikleri
(Engine Specifications)

İmalatçı (Manufacturer):
NISSAN-RENAULT
Çap (Diameter): Ø 77
FM Grup No: 7165

VJX,VJY,VJZ,TUD5
4 Sil. Benzinli 1527cc
37-42 KW (50-57 PS)
PEUGEOT, NISSAN,
CITROEN İLE ORTAK
MOTOR (With Citroen
Common Engine)
MİCRA, SAXO, XSARA
1994...



Piston Ölçüleri
(Piston Dimensions)

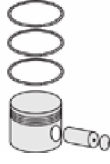
A : 40.400
B- : 1.580
C1 : 2.040
D : 66.300
E : 11.000

Pim : 23 x 60



Piston Özellikleri
(Piston Features)

Yağ Püskürtme Oyuğu
(Oil Jet Cut-Out)
Gözarası Düz
(Flat Eye Gap)



Piston Parça No
(Piston Part No)

87-325800-22
87-71785-STD

87-325806-22
87-71785-0,40



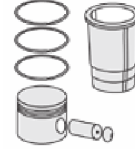
Segman Seti
(Ring Set)

06-325800-00-STD
06-325806-00-0,40 mm

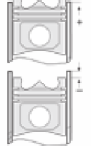
2.000 CKP KVI
1.750 P STD
3.000 CRP STD



Silindir Gömleği
(Liner)



Silindir Kit
(Assembly Set)



Piston - Blok Montaj
Yüksekliği
(Piston - Block
Assembly Height)

+1,04 / +1,14





NISSAN - Ø 78

87-71643-STD



Motor Özellikleri
(Engine Specifications)

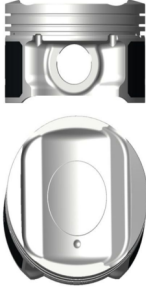
İmalatçı (Manufacturer):
NISSAN
Çap (Diameter): Ø 78
FM Grup No: 7283

HR12DE
3 Sil. Benzinli 1198cc 59
KW-80 PS MICRA IV,
NOTE
2005 - 2009

Piston Ölçüleri
(Piston Dimensions)

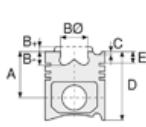
A : 31.050
B- : 6.200
D : 49.500
E : 4.600

Pim : 19 x 53,4



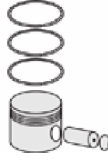
Piston Özellikleri
(Piston Features)

Gözarası Düz
(Flat Eye Gap)



Piston Parça No
(Piston Part No)

87-440100-22
87-71643-STD
87-440107-22
87-71643-0,50



Segman Seti
(Ring Set)

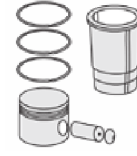
06-440100-50-STD
06-440107-50 0,50 mm
1.200 CR ST
1.200 P GOE
2.000 CR ST



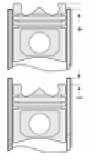
Silindir Gömleği
(Liner)



Silindir Kit
(Assembly Set)



Piston - Blok Montaj
Yüksekliği
(Piston - Block
Assembly Height)



FEDERAL-MOGUL
POWERTRAIN
TÜRKİYE

SİL. KAPAK. CONTA
(CYLINDER HEAD GASKET)

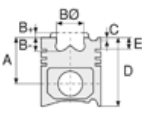


AH7660



NISSAN - Ø 78

87-71644-STD



Motor Özellikleri
(Engine Specifications)

İmalatçı (Manufacturer):
NISSAN
Çap (Diameter): Ø 78
FM Grup No: 7282

HR16DE
4 Sil. Benzinli 1598cc 81
KW-110 PS JUKE,
MICRA III, NOTE,
QASHQAI
2013...

Piston Ölçüleri
(Piston Dimensions)

A : 31.150
B - : 4.150
D : 49.000
E : 4.400

Pim : 19 x 53,4



Piston Özellikleri
(Piston Features)

Gözarası Düz
(Flat Eye Gap)

Piston Parça No
(Piston Part No)

87-440100-02
87-71644-STD
87-440107-02
87-71644-0,50

Segman Seti
(Ring Set)

06-440100-50-STD
06-440107-50-0,50

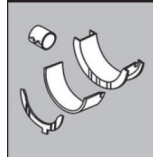
1.200 CR ST
1.200 P GOE
2.000 CR ST

Silindir Gömleği
(Liner)

Silindir Kit
(Assembly Set)

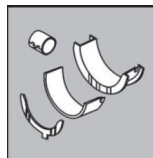
Piston - Blok Montaj
Yüksekliği
(Piston - Block
Assembly Height)

Ana Yatak
(Main Bearing)



H1359/5 STD

Kol Yatak
(Connecting Rod Bearing)



01-5049/4 STD

Sil. Kapak. Conta
(Cylinder Head Gasket)



AH6280



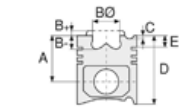


Motor Özellikleri
(Engine Specifications)

İmalatçı (Manufacturer):
MERCEDES BENZ PKW-
RENAULT-NISSAN
Çap (Diameter): Ø 80
FM Grup No: 7281

R9M 402

4 Sil. Dizel 1598cc 96
KW-130PS C Serisi
(C Series), MEGANE,
QASHQAI, SCENIC
2015...



Piston Ölçüleri
(Piston Dimensions)

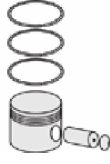
A : 46.000
B- : 12.350
BØ : 46.500
C1 : 0.300
D : 70.500
E : 9.000

Pim : 30 x 60



Piston Özellikleri
(Piston Features)

Segman Taşıyıcı
(Ring Carrier)
Soğutma Kanallı
(Cooling Gallery)
Yağ Püskürtme Oyuğu
(Oil Jet Cut-Out)
Gözarası Konik
(Conical Eye Gap)



Piston Parça No
(Piston Part No)

87-890000-02
87-71974-STD
87-890007-02
87-71974-0,50

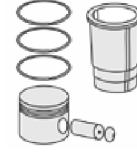


Segman Seti
(Ring Set)

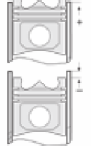
06-890000-00-STD
06-890007-00-0,50 mm
2.000 CKP KV1
1.750 P F14
2.000 CRP GOE



Silindir Gömleği
(Liner)



Silindir Kit
(Assembly Set)



Piston - Blok Montaj
Yüksekliği
(Piston - Block
Assembly Height)

1,116 mm / 1,184 mm
Conta İle (With Gasket)
0,387 / 0,551





NISSAN - Ø 85

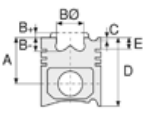
06-295400-00-STD



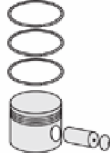
Motor Özellikleri
(Engine Specifications)

İmalatçı (Manufacturer):
NISSAN
Çap (Diameter): Ø 85
FM Grup No: 6501

LD 20
4 Sil. Dizel 1952cc
43-49 Kw (58-67 Ps)
21,3:1 2000 VAN,
VANETTE 2000
1981 - 1994






Piston Ölçüleri
(Piston Dimensions)



Piston Parça No
(Piston Part No)

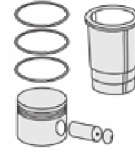


Segman Seti
(Ring Set)

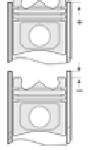
06-295400-00-STD
2.000  CRP KV1
2.000  P STD
4.000  CRP STD



Silindir Gömleği
(Liner)



Silindir Kit
(Assembly Set)



Piston - Blok Montaj
Yüksekliği
(Piston - Block
Assembly Height)





NISSAN - Ø 87

87-71649-STD



Motor Özellikleri
(Engine Specifications)

İmalatçı (Manufacturer):
NISSAN
Çap (Diameter): Ø 87
FM Grup No: 6502

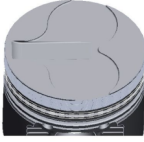
LD 23

4 Sil. Dizel 2283cc 55
Kw (75 PS) 22,2:1 CARGO,
SERENA, TRADE,
VANETTE
1995...

Piston Ölçüleri
(Piston Dimensions)

A : 47.230
B : 2.280
C1 : 1.150
D : 76.210
E : 15.000

Pim : 26 x 63,7



Piston Özellikleri
(Piston Features)

Segman Taşıyıcı
(Ring Carrier)
Çelik Plaka
(Steel Strut)
Yağ Püskürtme Oyuğu
(Oil Jet Cut-Out)
Gözarası Konik
(Conical Eye Gap)



Piston Parça No
(Piston Part No)

87-876400-02
87-71649-STD
87-876407-02
87-71649-050



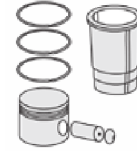
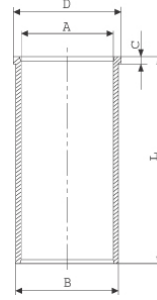
Segman Seti
(Ring Set)

06-876400-00-STD
06-876407-00-0,50 mm
2.000 CRP KV1
2.000 CRP IKA
3.000 CRP STD

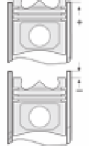


Silindir Gömleği
(Liner)

14-020820-00-D
B : 90.000
L : 160.000
D : 91.500
C : 5.000



Silindir Kit
(Assembly Set)



Piston - Blok Montaj
Yüksekliği
(Piston - Block
Assembly Height)

1,25mm Conta İle
(With Gasket) 0,60 / 0,65

1,30mm Conta İle
(With Gasket) 0,65 / 0,70

1,35mm Conta İle
(With Gasket) 0,70





NISSAN - Ø 89

06-294500-00-STD



Motor Özellikleri
(Engine Specifications)

İmalatçı (Manufacturer):
NISSAN

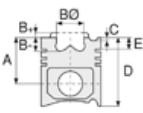
Çap (Diameter): Ø 89
FM Grup No: 6503

SD 23

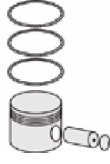
4 Sil. Dizel 2289cc 51-56
Kw (69-76 Ps) 20, 5:1
PICK-UP 2300,
URVAN 2300,
URVAN E20
1982 - 1997

SD 25

4 Sil. Dizel 2488cc 53-57
Kw (72-77 Ps) 21, 4:1
720 PICK-UP,
CABSTAR 2500,
FORK LIFT 2500,
JUNIOR 2500
1983 - 1997



Piston Ölçüleri
(Piston Dimensions)



Piston Parça No
(Piston Part No)



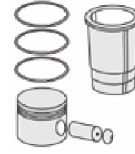
Segman Seti
(Ring Set)

06-294500-00-STD
06-294505-00-0,25 mm

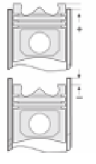
2.500  CRP KV1
2.000  P STD
4.500  CRP STD



Silindir Gömleği
(Liner)



Silindir Kit
(Assembly Set)



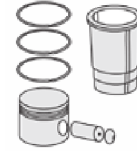
Piston - Blok Montaj
Yüksekliği
(Piston - Block
Assembly Height)





NISSAN - Ø 89

87-71653-STD



Motor Özellikleri
(Engine Specifications)

İmalatçı (Manufacturer):
NISSAN
Çap (Diameter): Ø 89
FM Grup No: 6509

YD25DDT1 TCI
4 Sil. Dizel 2488cc 110
Kw (150 Ps) 17, 5:1
D22 PICKUP SKYSTER
2003...

Piston Ölçüleri
(Piston Dimensions)

A : 48.850
B - : 18.100
BØ : 43.000
C1 : 0.750
C2 : 1.200
D : 80.100
E : 10.000

Pim : 28 x 61



Piston Özellikleri
(Piston Features)

Segman Taşıyıcı
(Ring Carrier)
Soğutma Kanallı
(Cooling Gallery)
Yağ Püskürtme Oyuğu
(Oil Jet Cut-Out)
Gözarası Konik
(Conical Eye Gap)

Piston Parça No
(Piston Part No)

87-877407-03
87-71653-0501
0,20 mm Kısa (Short)

87-877400-02
87-71653-STD

87-877407-02
87-71653-050

87-877400-03
87-71653-STD1
0,20 mm Kısa (Short)

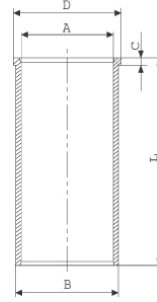
Segman Seti
(Ring Set)

06-877400-00-STD
06-877407-00-0,50 mm

2.060 CKP KV4
2.000 CRP GOE
3.000 NT ST

Silindir Gömleği
(Liner)

14-020750-00-D
B : 91.500
L : 166.000
D : 92.500
C : 5.000



Silindir Kit
(Assembly Set)

Piston - Blok Montaj
Yüksekliği
(Piston - Block
Assembly Height)

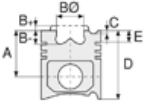
- 1.Çentik Conta İle
(With Notch Gasket)
+0,25 /+0,28
- 2.Çentik Conta İle
(With Notch Gasket)
+0,28 /+0,30
- 3.Çentik Conta İle
(With Notch Gasket)
+0,30 /+0,33
- 4.Çentik Conta İle
(With Notch Gasket)
+0,33 / +0,35
- 5.Çentik Conta İle
(With Notch Gasket)
+0,36





NISSAN - Ø 89

87-71654-STD



Motor Özellikleri
(Engine Specifications)

İmalatçı (Manufacturer):
NISSAN
Çap (Diameter): Ø 89
FM Grup No: 6510

YD25DDTI
4 Sil. Dizel 2500cc
126-128 kw /171-174 Ps
NAVARA 2.5 dci 16V,
PATHFINDER 2.5 dci 16V
2005...

Piston Ölçüleri
(Piston Dimensions)

A : 48.900
B- : 19.200
BØ : 44.400
C1 : 1.150
C2 : 1.200
D : 73.900
E : 10.000

Pim : 28 x 70,9



Piston Özellikleri
(Piston Features)

Segman Taşıyıcı
(Ring Carrier)
Soğutma Kanallı
(Cooling Gallery)
Yağ Püskürtme Oyuğu
(Oil Jet Cut-Out)
Gözarası Konik
(Conical Eye Gap)

Piston Parça No
(Piston Part No)

87-436100-02
87-71654-STD
87-436107-02
87-71654-0,50
87-436100-03
87-71654-STD1
0,20 mm Kısa (Short)
87-436107-03
87-71654-0501
0,20 mm Kısa (Short)

Segman Seti
(Ring Set)

06-436100-10-STD
06-436107-10-0,50 mm
2.000 NT ST
2.000 P STD
3.000 NT ST

Silindir Gömleği
(Liner)

Silindir Kit
(Assembly Set)

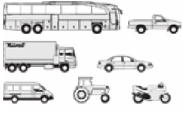
Piston - Blok Montaj
Yüksekliği
(Piston - Block
Assembly Height)





NISSAN - Ø 89

87-71655-STD



Motor Özellikleri
(Engine Specifications)

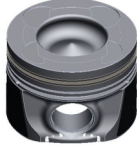
İmalatçı (Manufacturer):
NISSAN
Çap (Diameter): Ø 89
FM Grup No: 7171

YD25DDTİ (D40)
4 Sil. Dizel 2488cc 106
KW-144 PS NAVARA
2.5 dci
2008...

Piston Ölçüleri
(Piston Dimensions)

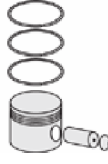
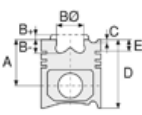
A : 48.850
B- : 17.400
BØ : 47.400
C1 : 1.200
C2 : 0.750
D : 73.800
E : 9.700

Pim : 28 x 70,9



Piston Özellikleri
(Piston Features)

Segman Taşıyıcı
(Ring Carrier)
Soğutma Kanallı
(Cooling Gallery)
Yağ Püskürtme Oyuğu
(Oil Jet Cut-Out)



Piston Parça No
(Piston Part No)

87-436100-22
87-71655-STD

87-436107-22
87-71655-0,50



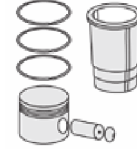
Segman Seti
(Ring Set)

06-436100-10-STD
06-436107-10-0,50 mm

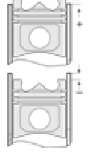
2.000 NT ST
2.000 P STD
3.000 NT ST



Silindir Gömleği
(Liner)

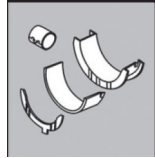


Silindir Kit
(Assembly Set)



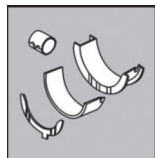
Piston - Blok Montaj
Yüksekliği
(Piston - Block
Assembly Height)

Ana Yatak
(Main Bearing)



H1249/5 STD

Kol Yatak
(Connecting Rod Bearing)



71-4580/4 STD

Sil. Kapak. Conta
(Cylinder Head Gasket)



AH5340/5350/5360



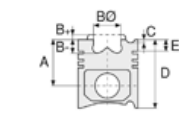


Motor Özellikleri
(Engine Specifications)

İmalatçı (Manufacturer):
NISSAN-BMC
Çap (Diameter): Ø 92,9
FM Grup No: 1310

TD 2,5

4 Sil. Dizel 2494cc 56
Kw (75PS) Nissan ile ortak
motor (With Nissan
Common Engine)



Piston Ölçüleri
(Piston Dimensions)

A : 50.300
B - : 1.500
C1 : 0.500
C2 : 0.800
D : 87.000
E : 15.000

Pim : 28 x 80



Piston Özellikleri
(Piston Features)

Segman Taşıyıcı
(Ring Carrier)
Çelik Plaka
(Steel Strut)
Gözarası Düz
(Flat Eye Gap)



Piston Parça No
(Piston Part No)

87-295500-02
87-71647-STD



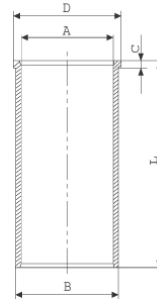
Segman Seti
(Ring Set)

06-295500-00-STD
2.500 CRP KV1
2.000 CRP KV1
4.000 CRP STD

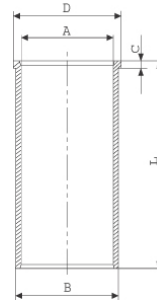


Silindir Gömleği
(Liner)

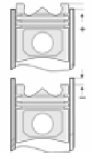
14-020430-00-D
B : 96.000
L : 160.000
D : 102.000
C : 5.000



14-029500-00-DH
B : 95.900
L : 160.000
D : 102.000
C : 5.000



Silindir Kit
(Assembly Set)



Piston - Blok Montaj
Yüksekliği
(Piston - Block
Assembly Height)

+0,11 / +0,16

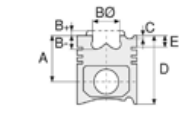




Motor Özellikleri
(Engine Specifications)

İmalatçı (Manufacturer):
NISSAN
Çap (Diameter): Ø 96
FM Grup No: 6507

TD 27Ti
4 Sil. Dizel 2664cc 74
Kw (101 PS) 21, 9:1
Turbocharged Intercool
TERRANO II 4x4
1997 - 2002



Piston Ölçüleri
(Piston Dimensions)

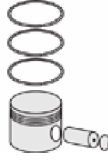
A : 50.450
B - : 1.300
D : 73.800
E : 10.385

Pim : 30 x 80



Piston Özellikleri
(Piston Features)

Segman Taşıyıcı
(Ring Carrier)
Çelik Plaka
(Steel Strut)
Sert Anotlama
(Hard Anodizing)
Soğutma Kanallı
(Cooling Gallery)
Gözarası Konik
(Conical Eye Gap)



Piston Parça No
(Piston Part No)

86-71652-STD
86-71652-STD



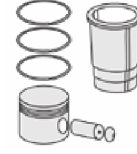
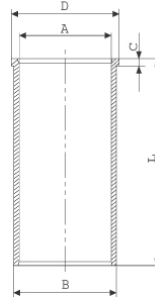
Segman Seti
(Ring Set)

2.600
2.000
3.000

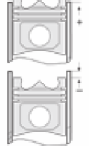


Silindir Gömleği
(Liner)

14-020950-00-D
B : 99.100
L : 162.000
D : 105.000
C : 6.000



Silindir Kit
(Assembly Set)



Piston - Blok Montaj
Yüksekliği
(Piston - Block
Assembly Height)

1 Kertik Conta İle
(With Notch Gasket)
0 / +0,36
2 Kertik Conta İle
(With Notch Gasket)
+0,36 / +0,41
3 Kertik Conta İle
(With Notch Gasket)
+0,41 / +0,48





Motor Özellikleri
(Engine Specifications)

İmalatçı (Manufacturer):
NISSAN

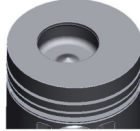
Çap (Diameter): Ø 96
FM Grup No: 6505

BD 30
4 Sil. Dizel 2700cc
100 PS LEVEND 3,0,
TD 27
1988...

Piston Ölçüleri
(Piston Dimensions)

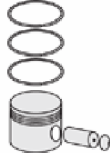
A : 53.100
B- : 20.100
BØ : 44.000
BX : 4.600
BY : 1.250
D : 89.600
E : 15.000

Pim : 30 x 80



Piston Özellikleri
(Piston Features)

Çelik Plaka
(Steel Strut)
Soğutma Kanallı
(Cooling Gallery)
Yağ Püskürtme Oyuğu
(Oil Jet Cut-Out)
Gözarası Düz
(Flat Eye Gap)



Piston Parça No
(Piston Part No)

87-875300-02
87-71650-STD



Segman Seti
(Ring Set)

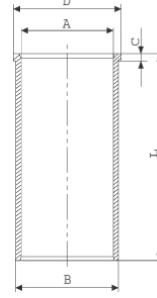
06-875300-00-STD

2.500 CRP KV1
2.000 CRP KV1
4.000 CRP STD



Silindir Gömleği
(Liner)

14-021090-00-D
B : 99.100
L : 172.600
D : 105.000
C : 5.250



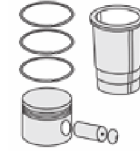
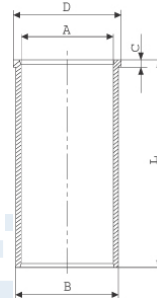
14-021091-00-D
B : 99.350
L : 172.600
D : 105.250
C : 5.500

Dıştan 0,25 mm Farklı
(0.25 mm Different
From The Outside)

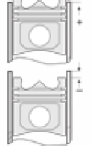
14-021092-10-D
B : 99.600
L : 172.600
D : 105.500
C : 6.000

Dıştan 0,50 mm Farklı
(0.50 mm Different
From The Outside)

14-029290-10-DH
B : 99.000
L : 172.600
D : 104.950
C : 5.100



Silindir Kit
(Assembly Set)



Piston - Blok Montaj
Yüksekliği
(Piston - Block
Assembly Height)

1,20mm Conta İle
(With Gasket)
+0 / +0,44

1,25mm Conta İle
(With Gasket)
+0,44 / +0,49

1,30 mm Conta İle
(With Gasket)
+0,49 / +0,54





NISSAN - Ø 96

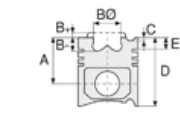
87-71651-STD



Motor Özellikleri
(Engine Specifications)

İmalatçı (Manufacturer):
NISSAN
Çap (Diameter): Ø 96
FM Grup No: 6506

TD 27 AD-2
4 Sil. Dizel 2700cc 62-73
Kw (85-99 Ps) 21, 8:1
PICK-UP, URBAN
1986 - 1997



Piston Ölçüleri
(Piston Dimensions)

A : 50.250
B - : 0.470
D : 86.000
E : 15.000

Pim : 30 x 74



Piston Özellikleri
(Piston Features)

Segman Taşıyıcı
(Ring Carrier)
Çelik Plaka
(Steel Strut)
Gözarası Konik
(Conical Eye Gap)



Piston Parça No
(Piston Part No)

87-876500-02
87-71651-STD
87-876507-02
87-71651-0,50



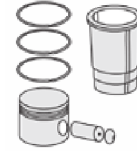
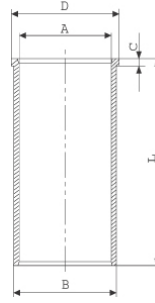
Segman Seti
(Ring Set)

06-876500-00-STD
06-876507-00-0,50 mm
2.500 CRP KV1
2.000 CRP KV1
3.000 CRP STD

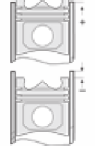


Silindir Gömleği
(Liner)

14-020950-00-D
B : 99.100
L : 162.000
D : 105.000
C : 6.000



Silindir Kit
(Assembly Set)



Piston - Blok Montaj
Yüksekliği
(Piston - Block
Assembly Height)

1 Kertik Conta İle
(With Notch Gasket)
+0,16 / +0,21

2 Kertik Conta İle
(With Notch Gasket)
+0,21 / +0,26

