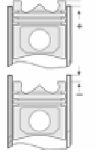
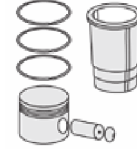
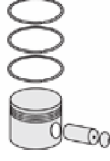
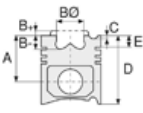




RUGGERINI - Ø 80

87-71870-STD



**Motor Özellikleri**  
(Engine Specifications)

İmalatçı (Manufacturer):  
Ruggerini  
Çap (Diameter): 80  
FM Grup No: 7301

RF 80  
1 Sil. Dizel 337cc 5,15/5,6/  
6 Kw (7/7,6/8,2 PS) 19:1  
ÇAPA MAKINASI (Hoeng  
Machine),  
JENERATÖR (Generator),  
MOTOPOMP (Motor  
Pump)

**Piston Ölçüleri**  
(Piston Dimensions)

A : 40.000  
B- : 15.000  
B0 : 40.500  
BX : 1.000  
BY : 5.000  
D : 75.000  
E : 11.000

Pim: 22 x 67,5



**Piston Özellikleri**  
(Piston Features)

Gözarası Düz  
(Flat Eye Gap)

**Piston Parça No**  
(Piston Part No)

87-847300-02  
87-71870-STD  
87-847307-02  
87-71870 050  
87-847311-02  
87-71870 100

**Segman Seti**  
(Ring Set)

06-847300-00-STD  
06-847307-00 0,50 mm  
06-847311-00 1,00 mm  
2.500 CRP STD  
2.500 P STD  
4.000 CRP STD

**Silindir Gömleği**  
(Liner)

**Silindir Kit**  
(Assembly Set)

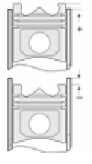
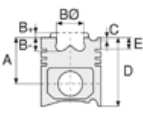
**Piston - Blok Montaj**  
**Yüksekliği**  
(Piston - Block  
Assembly Height)





RUGGERINI - Ø 90

87-71872-STD



**Motor Özellikleri**  
(Engine Specifications)

İmalatçı (Manufacturer):  
Ruggerini  
Çap (Diameter): 90  
FM Grup No: 7303

**RF 90**

1 Sil. Dizel 477cc 6,3/6,8/  
7,4 Kw (8,6/9,3/10 PS)  
18,5:1  
ÇAPA MAKINASI (Hoeing  
Machine),  
JENERATÖR (Generator),  
MOTOPOMP (Motor  
Pump)

**Piston Ölçüleri**  
(Piston Dimensions)

A : 40.000  
B- : 14.700  
B0 : 40.300  
BX : 1.000  
BY : 5.000  
D : 80.000  
E : 11.000

Pim: 22 x 64



**Piston Özellikleri**  
(Piston Features)

Gözarası Konik  
(Conical Eye Gap)

**Piston Parça No**  
(Piston Part No)

87-847400-22  
87-71872-STD  
87-847407-22  
87-71872 050  
87-847411-22  
87-71872 100

**Segman Seti**  
(Ring Set)

06-847400-00-STD  
06-847407-00 0,50 mm  
06-847411-00 1,00 mm  
2.000 CRP KV1  
2.000 P STD  
4.000 CRP STD

**Silindir Gömleği**  
(Liner)

**Silindir Kit**  
(Assembly Set)

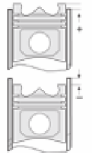
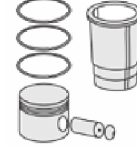
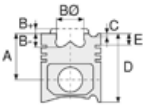
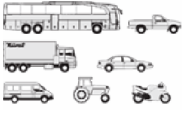
**Piston - Blok Montaj**  
**Yüksekliği**  
(Piston - Block  
Assembly Height)





RUGGERINI - Ø 95

87-71873-STD



**Motor Özellikleri**  
(Engine Specifications)

İmalatçı (Manufacturer):  
Ruggerini  
Çap (Diameter): 95  
FM Grup No: 7304

**RF 140**  
1 Sil. Dizel 602cc 8,5/9,2/  
10 Kw (11,5/12,5/13,6 PS)  
18:1  
ÇAPA MAKINASI (Hoeing  
Machine),  
JENERATÖR (Generator),  
MOTOPOMP (Motor  
Pump)

**Piston Ölçüleri**  
(Piston Dimensions)

A : 50.000  
B- : 18.500  
BØ : 34.340  
BX : 1.000  
BY : 5.000  
D : 93.000  
E : 12.500

Pim: 25 x 74



**Piston Özellikleri**  
(Piston Features)

Gözarası Konik  
(Conical Eye Gap)

**Piston Parça No**  
(Piston Part No)

87-847500-02  
87-71873-STD  
87-847507-02  
87-71873 050  
87-847511-02  
87-71873 100

**Segman Seti**  
(Ring Set)

06-847500-00-STD  
06-847507-00 0,50 mm  
06-847511-00 1,00 mm  
2.500 CRP KV1  
2.500 P STD  
2.500 P STD  
5.500 P STD

**Silindir Gömleği**  
(Liner)

**Silindir Kit**  
(Assembly Set)

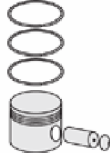
**Piston - Blok Montaj**  
**Yüksekliği**  
(Piston - Block  
Assembly Height)





RUGGERINI - Ø 90

87-71874-STD



**Motor Özellikleri**  
(Engine Specifications)

İmalatçı (Manufacturer):  
Ruggerini  
Çap (Diameter): 90  
FM Grup No: 7306

**RF 140**

1 Sil. Dizel 541cc 7,6/8,24/  
8,98 Kw(10,3/11,2/12,2 PS)  
18:1  
ÇAPA MAKINASI (Hoing  
Machine),  
JENERATÖR (Generator),  
MOTOPOMP (Motor  
Pump)

**Piston Ölçüleri**  
(Piston Dimensions)

A : 50.000  
B- : 17.000  
BØ : 42.000  
BX : 1.000  
BY : 5.000  
D : 100.000  
E : 11.000

Pim: 25 x 74



**Piston Özellikleri**  
(Piston Features)

Gözarası Düz  
(Flat Eye Gap)

**Piston Parça No**  
(Piston Part No)

87-848400-02  
87-71874-STD  
87-848407-02  
87-71874-050  
87-848411-02  
87-71874-100

**Segman Seti**  
(Ring Set)

06-848400-00-STD  
06-848407-00 0,50 mm  
06-848411-00 1,00 mm  
2.500 CRP STD  
2.500 P STD  
2.500 P STD  
5.000 CRP STD

**Silindir Gömleği**  
(Liner)

**Silindir Kit**  
(Assembly Set)

**Piston - Blok Montaj**  
**Yüksekliği**  
(Piston - Block  
Assembly Height)





RUGGERINI - Ø 105

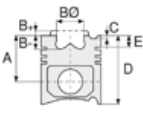
06-886400-00-STD



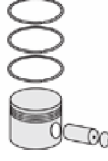
**Motor Özellikleri**  
(Engine Specifications)

İmalatçı (Manufacturer):  
Ruggerini  
Çap (Diameter): 105  
FM Grup No: 7305

RF 380  
1 Sil. Dizel  
ÇAPA MAKINASI (Hoeing  
Machine), JENERATÖR  
(Generator), MOTO POMP  
(Motor Pump)



**Piston Ölçüleri**  
(Piston Dimensions)



**Piston Parça No**  
(Piston Part No)



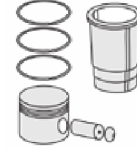
**Segman Seti**  
(Ring Set)

06-886400-00-STD

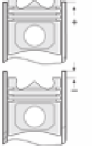
2.500 CRP KV1  
2.500 CRP STD  
2.500 P STD  
5.000 P STD



**Silindir Gömleği**  
(Liner)



**Silindir Kit**  
(Assembly Set)



**Piston - Blok Montaj**  
**Yüksekliği**  
(Piston - Block  
Assembly Height)

