



Motor Özellikleri
(Engine Specifications)

İmalatçı (Manufacturer):
SUPER STAR
Çap (Diameter): Ø 98,48
FM Grup No: 8001

1 Sil. Dizel 770cc 12-16 PS
77,12, 77,16

2 Sil. Dizel 1540cc
26/28/32 PS
77,12, 77,16

Piston Ölçüleri
(Piston Dimensions)

A : 63.600
B- : 19.300
BØ : 54.100
BX : 5.100
BY : 2.000
D : 114.400
E : 17.880

Pim: 34,925 x 84,1



Piston Özellikleri
(Piston Features)

Gözarası Düz
(Flat Eye Gap)

Piston Parça No
(Piston Part No)

87-315000-02
87-72056-STD

Segman Seti
(Ring Set)

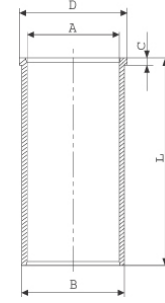
06-315000-10-STD
06-315007-10 0,50 mm

2.385 CRP KVI
2.385 P STD
2.385 P STD
6.355 CRP STD
6.335 P STD

Silindir Gömleği
(Liner)

14-261770-00-WH

B : 112.700
L : 207.400
D : 121.700
C : 7.100
F : 1.400



Silindir Kit
(Assembly Set)

88-315000-02-STD
88-72056-STD

Piston - Blok Montaj
Yüksekliği
(Piston - Block
Assembly Height)

+ 0,60 / + 0,70





Motor Özellikleri
(Engine Specifications)

İmalatçı (Manufacturer):
SUPER STAR
Çap (Diameter): Ø 108
FM Grup No: 8002

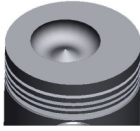
1 Sil. Dizel 19 PS

2 Sil. Dizel 39 HP

Piston Ölçüleri
(Piston Dimensions)

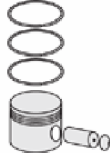
A : 63.600
B- : 20.000
BØ : 55.570
BX : 6.000
BY : 3.000
D : 108.000
E : 14.000

Pim: 35 x 85



Piston Özellikleri
(Piston Features)

Çelik Plaka
(Steel Strut)
Gözarası Düz
(Flat Eye Gap)



Piston Parça No
(Piston Part No)

87-076460-22
87-72060-STD



Segman Seti
(Ring Set)

06-076460-00-STD

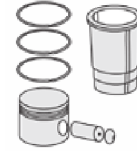
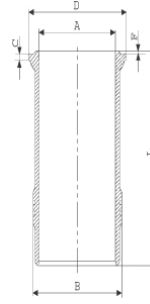
3.000 CRP STD
3.000 P STD
3.000 P STD
5.000 CRP STD



Silindir Gömleği
(Liner)

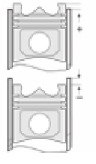
14-265190-01-WH

B : 121.000
L : 207.400
D : 127.700
C : 7.100
F : 1.400



Silindir Kit
(Assembly Set)

88-076460-22-STD
88-72060-STD



Piston - Blok Montaj
Yüksekliği
(Piston - Block
Assembly Height)

