



TOYOTA - Ø 72,5

87-72075-STD



Motor Özellikleri
(Engine Specifications)

İmalatçı (Manufacturer):
TOYOTA
Çap (Diameter): Ø 72,5
FM Grup No: 8210

1NR-FE
4 Sil. Benzinli 1329cc
70 kw-101 PS
Auris, Corolla, Verso, Yaris
2005...

Piston Ölçüleri
(Piston Dimensions)

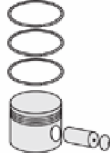
A : 30.200
B- : 7.500
BØ : 57.160
D : 47.800
E : 5.080

Pim: 18 x 53,1



Piston Özellikleri
(Piston Features)

Biyel Koluna Sıkı Geçme
(Close-fit to
Connecting Rod)
Gözarası Konik
(Conical Eye Gap)



Piston Parça No
(Piston Part No)

87-899000-02
87-72075-STD
87-899007-02
87-72075 0,50

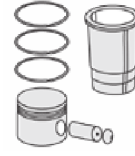


Segman Seti
(Ring Set)

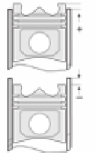
06-899000-50-STD
06-899007-50 0,50 mm
1.000 PVD ST
1.000 CR ST
2.000 PVD ST



Silindir Gömleği
(Liner)



Silindir Kit
(Assembly Set)



Piston - Blok Montaj
Yüksekliği
(Piston - Block
Assembly Height)



FEDERAL-MOGUL
POWERTRAIN
TÜRKİYE

SİL. KAPAK. CONTA
(CYLINDER HEAD GASKET)

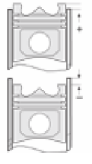
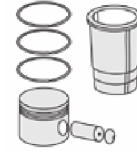
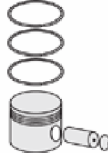
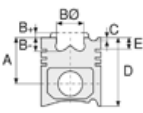


AH7420



TOYOTA - Ø 73

87-72066-STD



Motor Özellikleri
(Engine Specifications)

Piston Ölçüleri
(Piston Dimensions)

Piston Parça No
(Piston Part No)

Segman Seti
(Ring Set)

Silindir Gömleği
(Liner)

Silindir Kit
(Assembly Set)

Piston - Blok Montaj
Yüksekliği
(Piston - Block
Assembly Height)

İmalatçı (Manufacturer):
TOYOTA
Çap (Diameter): Ø 73
FM Grup No: 8204

A : 30.000
B - : 9.200
C1 : 5.000
D : 58.000
E : 7.000

87-374400-02
87-72066-STD

87-374407-02
87-72066-050

06-374400-50-STD
06-374407-50 0,50 mm

1.500 CRP IKA
1.500 P KVI
3.000 CR ST

2 E / C / U / L
4 Sil. Benzinli 1295cc
55 Kw(75 PS) 9:1
OHC 12 v
Corolla 1300 DLX,
Corolla 1300 GL,
Corolla 1300 XL
1987 - 1995

Pim: 18 x 59



Piston Özellikleri
(Piston Features)

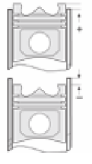
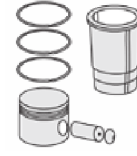
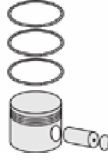
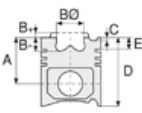
Biyel Koluna Sıkı Geçme
(Close-fit to
Connecting Rod)
Gözarası Düz
(Flat Eye Gap)





TOYOTA - Ø 73

87-72067-STD



Motor Özellikleri
(Engine Specifications)

İmalatçı (Manufacturer):
TOYOTA
Çap (Diameter): Ø 73
FM Grup No: 8208

1 D 120 /150
D4D-1ND-TV
4 Sil. Dizel 120 BG
Corolla
2005....

Piston Ölçüleri
(Piston Dimensions)

A : 41.940
B- : 14.700
BØ : 36.500
BX : 2.100
BY : 0.500
C1 : 0.900
D : 64.350
E : 7.250

Pim: 27 x 59,3



Piston Özellikleri
(Piston Features)

Segman Taşıyıcı
(Ring Carrier)
Sert Anotlama
(Hard Anodizing)
Soğutma Kanallı
(Coolin Gallery)
Yağ Püskürtme Oyuğu
(Oil Jet Cut-out)
Gözarası Konik
(Conical Eye Gap)

Piston Parça No
(Piston Part No)

87-898407-03
87-72067-0501
0,20 mm Kısa (Short)
87-898400-02
87-72067-STD
87-898407-02
87-72067-0,50
87-898400-03
87-72067-STD1
0,20 mm Kısa (Short)

Segman Seti
(Ring Set)

06-898400-10-STD
06-898407-10 0.50 mm
1.500 NT ST
1.500 P F14
3.000 NT ST

Silindir Gömleği
(Liner)

Silindir Kit
(Assembly Set)

Piston - Blok Montaj
Yüksekliği
(Piston - Block
Assembly Height)

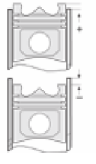
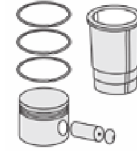
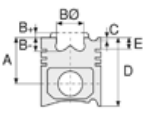
1 Kertik (Notch)
0.375/0.425 mm
2 Kertik (Notch)
0.425/0.475 mm
3 Kertik (Notch)
0.475/0.525 mm
4 Kertik (Notch)
0.525/0.575 mm
5 Kertik (Notch)
0.575/0.625 mm





TOYOTA - Ø 73

87-72074-STD



Motor Özellikleri
(Engine Specifications)

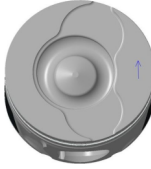
İmalatçı (Manufacturer):
TOYOTA
Çap (Diameter): Ø 73
FM Grup No: 8212

1ND-TV 1.4 D-4D
4 Sil. Dizel 1364cc
50 kW / 68 PS 18.5
Auris, Corolla, Verso, Yaris
2012....

Piston Ölçüleri
(Piston Dimensions)

A : 41.990
B - : 15.100
BØ : 37.500
C1 : 0.900
D : 64.400
E : 8.000

Pim: 27 x 59,3



Piston Özellikleri
(Piston Features)

Segman Taşıyıcı
(Ring Carrier)
Sert Anotlama
(Hard Anodizing)
Soğutma Kanallı
(Coolin Gallery)
Yağ Püskürtme Oyuğu
(Oil Jet Cut-out)
Gözarası Konik
(Conical Eye Gap)

Piston Parça No
(Piston Part No)

87-899100-02
87-72074-STD
87-899107-02
87-72074 0,50

Segman Seti
(Ring Set)

06-899100-00-STD
06-899107-00 0,50
1.750 PVD ST
1.500 CR KVI
2.500 NT ST

Silindir Gömleği
(Liner)

Silindir Kit
(Assembly Set)

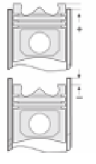
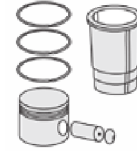
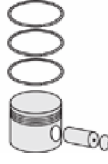
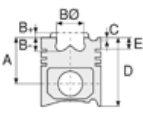
Piston - Blok Montaj
Yüksekliği
(Piston - Block
Assembly Height)





TOYOTA - Ø 79

87-72068-STD



Motor Özellikleri
(Engine Specifications)

İmalatçı (Manufacturer):
TOYOTA
Çap (Diameter): Ø 79
FM Grup No: 8207

3ZZ-FE
4 Sil. Benzinli 1598cc
110 PS
COROLLA 1.6 VVTi
2001....

Piston Ölçüleri
(Piston Dimensions)

A : 32.200
B- : 3.800
C1 : 5.100
D : 52.200
E : 7.500

Pim: 20 x 50



Piston Özellikleri
(Piston Features)

Sert Anotlama
(Hard Anodizing)
Gözarası Düz
(Flat Eye Gap)

Piston Parça No
(Piston Part No)

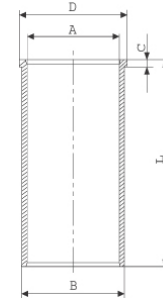
87-898300-02
87-72068-STD
87-898307-02
87-72068-050

Segman Seti
(Ring Set)

06-898300-50-STD
06-898307-50 0,50 mm
1.200 CR ST
1.200 P GOE
3.000 ST

Silindir Gömleği
(Liner)

14-021810-00-D
B : 82.000
L : 140.000
D : 83.000
C : 5.000



14-021811-00-D

B : 82.500
L : 140.000
D : 83.500
C : 5.000

Dış Çap 0,50 mm Farklı
(Outer Diameter
0,50 mm Different)

Silindir Kit
(Assembly Set)

Piston - Blok Montaj
Yüksekliği
(Piston - Block
Assembly Height)





TOYOTA - Ø 79

87-72069-STD



Motor Özellikleri
(Engine Specifications)

İmalatçı (Manufacturer):
TOYOTA
Çap (Diameter): Ø 79
FM Grup No: 8206

1.4 VVT-i
4 Sil. Benzinli 1398cc
97 PS
COROLLA 1.4
TERRA VVT-i
2001....

Piston Ölçüleri
(Piston Dimensions)

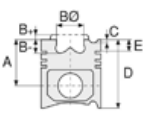
A : 32.200
B- : 2.000
C1 : 5.420
D : 51.700
E : 7.700

Pim: 20 x 50



Piston Özellikleri
(Piston Features)

Sert Anotlama
(Hard Anodizing)
Gözarası Düz
(Flat Eye Gap)



Piston Parça No
(Piston Part No)

87-898300-22
87-72069-STD
87-898307-22
87-72069-050



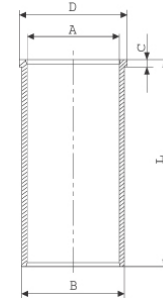
Segman Seti
(Ring Set)

06-898300-50-STD
06-898307-50 0,50 mm
1.200 CR ST
1.200 P GOE
3.000 ST



Silindir Gömleği
(Liner)

14-021810-00-D
B : 82.000
L : 140.000
D : 83.000
C : 5.000

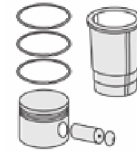


14-021811-00-D

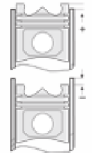
B : 82.500
L : 140.000
D : 83.500
C : 5.000

Dış Çap 0,50 mm Farklı
(Outer Diameter
0,50 mm Different)

Silindir Kit
(Assembly Set)



Piston - Blok Montaj
Yüksekliği
(Piston - Block
Assembly Height)





TOYOTA - Ø 80,5

87-72072-STD



Motor Özellikleri
(Engine Specifications)

İmalatçı (Manufacturer):
TOYOTA
Çap (Diameter): Ø 80,5
FM Grup No: 8209

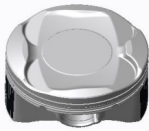
1ZR-FE & 1ZR-FAE
1.6L 16V

4 Sil. Benzinli 1598cc
91-97 KW / 124-132 PS
AURIS, AVANSİS,
COROLLA, VERSO
2007...

Piston Ölçüleri
(Piston Dimensions)

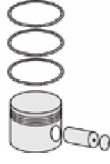
A : 33.420
B : 2.480
C1 : 2.590
C2 : 3.120
D : 52.520
E : 6.200

Pim: 20 x 50



Piston Özellikleri
(Piston Features)

Sert Anotlama
(Hard Anodizing)
Gözarası Konik
(Conical Eye Gap)



Piston Parça No
(Piston Part No)

87-898800-02
87-72072-STD
87-898807-02
87-72072 0,50

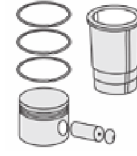


Segman Seti
(Ring Set)

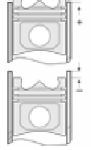
06-898800-00-STD
06-898807-00 0,50 mm
1.000 PVD ST
1.000 CR KV1
1.500 PVD ST



Silindir Gömleği
(Liner)



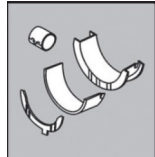
Silindir Kit
(Assembly Set)



Piston - Blok Montaj
Yüksekliği
(Piston - Block
Assembly Height)

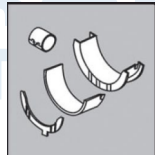
ANA YATAK
(MAIN BEARING)

H1321/5 STD



KOL YATAK
(ARM BED)

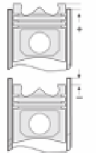
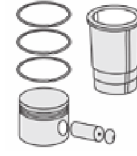
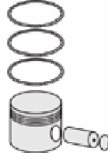
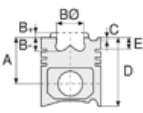
01/4893/4 STD





TOYOTA - Ø 81

87-72070-STD



Motor Özellikleri
(Engine Specifications)

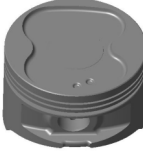
İmalatçı (Manufacturer):
TOYOTA
Çap (Diameter): Ø 81
FM Grup No: 8202

4 AF
4 Sil. Benzinli 1600cc
Karbüratörlü (With
Carburetor)
Corolla 1,6 Lt
1988 - 1992

Piston Ölçüleri
(Piston Dimensions)

A : 30.500
B- : 2.800
D : 61.000
E : 6.300

Pim: 18 x 61



Piston Özellikleri
(Piston Features)

Sert Anotlama
(Hard Anodizing)
Biyel Koluna Sıkı Geçme
(Close-fit to
Connecting Rod)
Gözarası Düz
(Flat Eye Gap)

Piston Parça No
(Piston Part No)

87-374700-02
87-72070-STD
87-374707-02
87-72070 050

Segman Seti
(Ring Set)

06-374700-50-STD
06-374707-50 0,50 mm
1.500 CRP KV1
1.500 P F14
3.000 CR ST

Silindir Gömleği
(Liner)

Silindir Kit
(Assembly Set)

Piston - Blok Montaj
Yüksekliği
(Piston - Block
Assembly Height)





TOYOTA - Ø 81

87-72071-STD



Motor Özellikleri
(Engine Specifications)

İmalatçı (Manufacturer):
TOYOTA
Çap (Diameter): Ø 81
FM Grup No: 8201

4 AFE
4 Sil. Benzinli 1600cc
Enjeksiyonlu (Injection)
Corolla 1,6 Lt
1987....

Piston Ölçüleri
(Piston Dimensions)

A : 30.500
B- : 2.600
C1 : 2.200
C2 : 2.500
D : 55.500
E : 5.200

Pim: 20 x 56



Piston Özellikleri
(Piston Features)

Sert Anotlama
(Hard Anodizing)
Biyel Koluna Sıkı Geçme
(Close-fit to
Connecting Rod)
Gözarası Düz
(Flat Eye Gap)

Piston Parça No
(Piston Part No)

87-374800-02
87-72071-STD
87-374807-02
87-72071 050

Segman Seti
(Ring Set)

06-374800-50-STD
06-374807-50 0,50 mm
1.200 CRP KV1
1.500 P F14
3.000 CR ST

Silindir Gömleği
(Liner)

Silindir Kit
(Assembly Set)

Piston - Blok Montaj
Yüksekliği
(Piston - Block
Assembly Height)





TOYOTA - Ø 92

87-72076-STD



Motor Özellikleri
(Engine Specifications)

İmalatçı (Manufacturer):
TOYOTA

Çap (Diameter): Ø 92
FM Grup No: 8211

D-4D 2KD-FTV
4 Sil. Dizel 2494cc
65-108 kw/ 88-147ps 18,5
HILUX VII
2010....

Piston Ölçüleri
(Piston Dimensions)

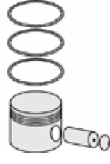
A : 54.200
B- : 15.850
BØ : 48.250
C1 : 0.500
C2 : 1.100
D : 82.200
E : 9.000

Pim: 34 x 65



Piston Özellikleri
(Piston Features)

Sert Anotlama
(Hard Anodizing)
Soğutma Kanallı
(Coolin Gallery)
Yağ Püskürtme Oyuğu
(Oil Jet Cut-out)
Gözarası Konik
(Conical Eye Gap)



Piston Parça No
(Piston Part No)

87-899300-02
87-72076-STD
87-899307-02
87-72076 0,50



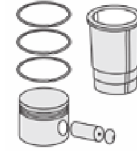
Segman Seti
(Ring Set)

06-899300-00-STD
06-899307-00 0,50

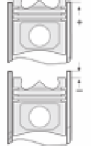
2.000 CKS ST
1.500 NT ST
3.000 NT ST



Silindir Gömleği
(Liner)



Silindir Kit
(Assembly Set)



Piston - Blok Montaj
Yüksekliği
(Piston - Block
Assembly Height)

0,70 Conta ile
(With Gasket)
-020/-0,10

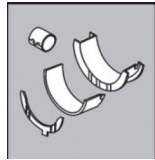
0,75 Conta ile
(With Gasket)
-0,10/+0,05

0,80 Conta ile
(With Gasket)
-0,05/+0,05

0,85 Conta ile
(With Gasket)
+0,05/+0,10

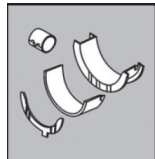
0,90 Conta ile
(With Gasket)
+0,10/+0,20

ANA YATAK
(MAIN BEARING)



H1237/5 STD

KOL YATAK
(ARM BED)



71-4565/4 STD

SİL. KAPAK. CONTA
(CYLINDER HEAD GASKET)



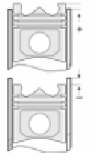
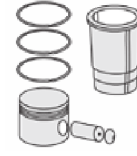
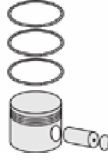
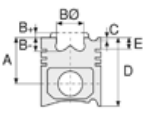
FF5980





TOYOTA - Ø 92

87-72078-STD



Motor Özellikleri
(Engine Specifications)

İmalatçı (Manufacturer):
TOYOTA
Çap (Diameter): Ø 92
FM Grup No: 8203

2 L
4 Sil. Dizel 2445cc 79 PS
Hiace
1978 - 1995

Piston Ölçüleri
(Piston Dimensions)

A : 44.350
B - : 1.600
D : 80.350
E : 9.000

Pim: 27 x 70



Piston Özellikleri
(Piston Features)

Segman Taşıyıcı
(Ring Carrier)
Yağ Püskürtme Oyuğu
(Oil Jet Cut-out)
Gözarası Konik
(Conical Eye Gap)

Piston Parça No
(Piston Part No)

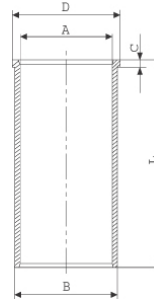
87-897000-02
87-72078-STD
87-897007-02
87-72078 050

Segman Seti
(Ring Set)

06-897000-00-STD
06-897007-00 0,50 mm
2.000 CRP KV1
2.000 CRP IKA
4.000 CRP STD

Silindir Gömleği
(Liner)

14-020310-00-D
B : 95.040
L : 155.000
D : 96.040
C : 5.000



Silindir Kit
(Assembly Set)

Piston - Blok Montaj
Yüksekliği
(Piston - Block
Assembly Height)

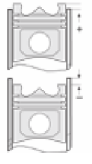
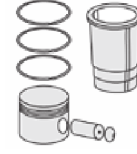
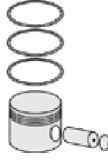
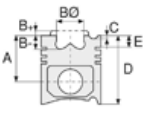
B Conta ile
(With B Gasket)
+0,68 / +0,77
D Conta ile
(With D Gasket)
+0,78 / +0,87
F Conta ile
(With F Gasket)
+0,87 / + 0,97





TOYOTA - Ø 92

87-72081-STD



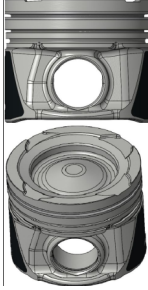
Motor Özellikleri
(Engine Specifications)

İmalatçı (Manufacturer):
TOYOTA
Çap (Diameter): Ø 92
FM Grup No: 8213
2GD-FTV
4 Sil. Dizel 2393cc
108 -125kw /
147 -170PS 15,6
HILUX VIII
2015...

Piston Ölçüleri
(Piston Dimensions)

A : 53.300
B - : 1.000
B : 59.300
C1 : 1.450
C2 : 1.650
D : 50.900
E : 6.500

Pim: 31 x 67



Piston Özellikleri
(Piston Features)

Segman Taşıyıcı
(Ring Carrier)
Soğutma Kanallı
(Coolin Gallery)
Gözarası Konik
(Conical Eye Gap)

Piston Parça No
(Piston Part No)

87-899300-22
87-72081-STD
87-899307-22
87-72081 0,50

Segman Seti
(Ring Set)

06-899300-00 STD
06-899307-00 0,50
2.000 CKS ST
1.500 NT ST
3.000 NT ST

Silindir Gömleği
(Liner)

Silindir Kit
(Assembly Set)

Piston - Blok Montaj
Yüksekliği
(Piston - Block
Assembly Height)





Motor Özellikleri
(Engine Specifications)

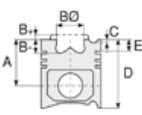
İmalatçı (Manufacturer):
IVECO TRK - TOYOTA
Çap (Diameter): Ø 95
FM Grup No: 4104

802.000
2 Sil. Dizel 1560cc
18,5 Kw (25 PS)

803.000 (8030.01)
3 Sil. Dizel 2339cc
28/33/37 Kw
(38/45/51 PS) 17:1
570 TURBO, 612 NE,
616 N2
1966 - 1971

804.000 (8040.01)
4 Sil. Dizel 3119cc
40/51,5 Kw (54/70 PS) 17:1
616 N2, 616 N4, 625 N1,
625 N2, ORSETTO
15L, 15N
1968 - 1971

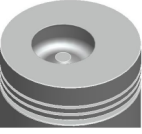
806.000
(**8060.01/11**)
6 Sil. Dizel 4678cc 81
Kw (110 PS) 17:1
UTB İle Ortak Motor
(Common Engine With
UTB)
416 A TRAKTOR, 645 N1,
645 N2, 650 N1, 650 N2,
655 N, 662 N1, 662 N2,
672 N2
1960 - 1971



Piston Ölçüleri
(Piston Dimensions)

A : 59.650
B- : 23.500
BØ : 42.500
BX : 5.000
D : 101.150
E : 19.600

Pim: 32 x 84



Piston Özellikleri
(Piston Features)

Gözarası Düz
(Flat Eye Gap)



Piston Parça No
(Piston Part No)

87-207200-02
87-70754-STD

87-207206-02
87-70754 040

87-207208-02
87-70754 060

87-207211-02
87-70754 100



Segman Seti
(Ring Set)

06-207200-10-STD
06-207206-10 0,40 mm
06-207208-10 0,60 mm
06-207211-10 1,00 mm

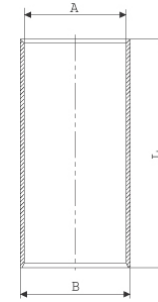
2.500 CRP KV1
2.500 P IKA
5.500 CRP STD



Silindir Gömleği
(Liner)

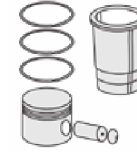
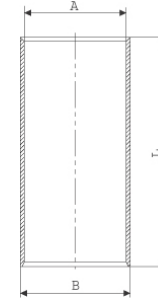
14-010620-00-D

B : 99.000
L : 187.000

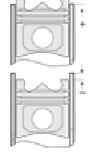


14-019870-00-D

B : 103.000
L : 187.000



Silindir Kit
(Assembly Set)



Piston - Blok Montaj
Yüksekliği
(Piston - Block
Assembly Height)

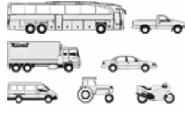
+ 0,46 / + 0,79





TOYOTA - Ø 95

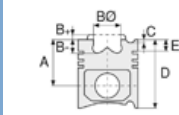
87-72079-STD



Motor Özellikleri
(Engine Specifications)

İmalatçı (Manufacturer):
TOYOTA
Çap (Diameter): Ø 95
FM Grup No: 8205

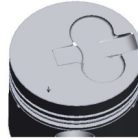
B
4 Sil. Dizel 2977cc 21:1
Coaster3000 Bus(BU19),
Dyna 3000(BU10),
Dyna 3000(BU12),
Dyna 3000(BU15),
Dyna 3000(BU20),
Dyna 3000(BU22),
Dyna 3000(BU30),
Dyna 3000(BU35),
Dyna 3000(BU70),
Landcruiser3000(BJ40),
Landcruiser3000(BJ40V),
Landcruiser3000(BJ43),
Toyoace3000(BY30),
Toyoace3000(BY31),
Toyoace3000(BY31D)
1977 - 1995



Piston Ölçüleri
(Piston Dimensions)

A : 52.200
B- : 2.600
D : 101.200
E : 15.200

Pim: 29 x 79



Piston Özellikleri
(Piston Features)

Gözarası Düz
(Flat Eye Gap)



Piston Parça No
(Piston Part No)

87-898000-02
87-72079-STD



Segman Seti
(Ring Set)

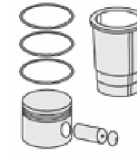
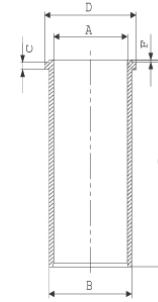
06-898000-00-STD
2.570 CRP KV1
2.500 P GOE
4.500 CRP GOE



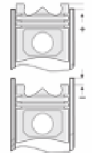
Silindir Gömleği
(Liner)

14-040100-00-D

B : 102.070
L : 190.220
D : 107.750
C : 2.550
F : 1.200



Silindir Kit
(Assembly Set)



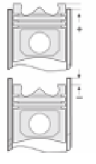
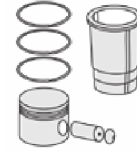
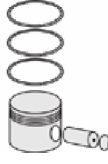
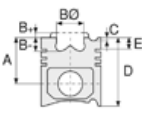
Piston - Blok Montaj
Yüksekliği
(Piston - Block
Assembly Height)





TOYOTA - Ø 96

87-72082-STD



Motor Özellikleri
(Engine Specifications)

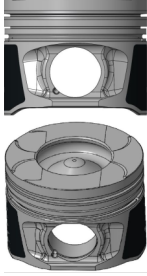
İmalatçı (Manufacturer):
TOYOTA
Çap (Diameter): Ø 96
FM Grup No: 8214

1KD-FTV
4 Sil. Dizel 2982cc
75KW-102PS
HILUX VII, LAND
CRUISER
2010...

Piston Ölçüleri
(Piston Dimensions)

A : 49.600
B - : 16.250
BØ : 61.900
C1 : 1.000
C2 : 0.850
D : 78.400
E : 10.100

Pim: 34 x 73



Piston Özellikleri
(Piston Features)

Segman Taşıyıcı
(Ring Carrier)
Soğutma Kanallı
(Coolin Gallery)
Gözarası Konik
(Conical Eye Gap)

Piston Parça No
(Piston Part No)

87-894700-02
87-72082-STD
87-894707-02
87-72082 0,50

Segman Seti
(Ring Set)

06-894700-20-STD
06-894707-20 0,50
2.000 NT ST
1.500 NT ST
3.000 NT ST

Silindir Gömleği
(Liner)

Silindir Kit
(Assembly Set)

Piston - Blok Montaj
Yüksekliği
(Piston - Block
Assembly Height)

